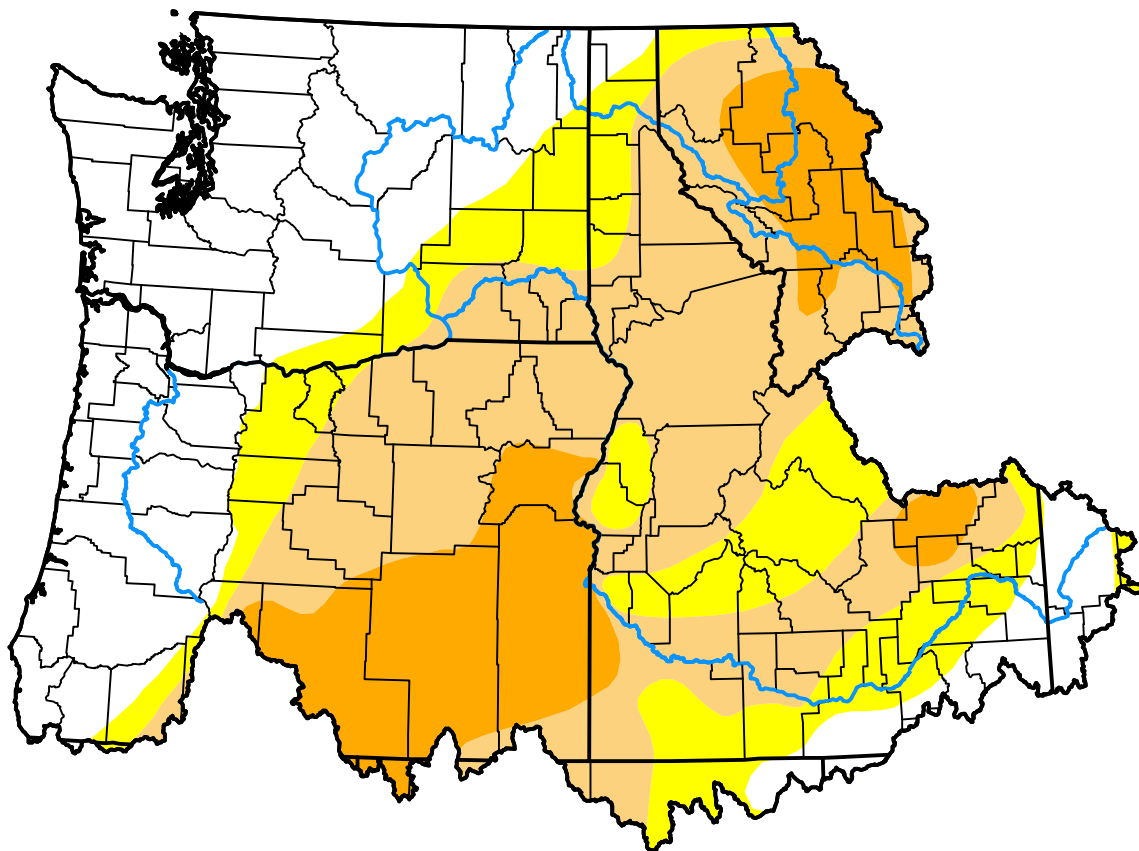


U.S. Drought Monitor

Pacific Northwest Watershed

March 1, 2016
 (Released Thursday, Mar. 3, 2016)
 Valid 7 a.m. EST



Drought Conditions (Percent Area)

	None	D0-D4	D1-D4	D2-D4	D3-D4	D4
Current	34.33	65.67	47.30	15.72	0.00	0.00
Last Week <i>02-25-2016</i>	34.31	65.69	48.76	16.77	0.00	0.00
3 Months Ago <i>12-03-2015</i>	10.32	89.68	78.48	67.12	35.87	0.00
Start of Calendar Year <i>12-31-2015</i>	24.34	75.66	62.19	38.34	14.30	0.00
Start of Water Year <i>10-01-2015</i>	0.03	99.97	94.08	81.91	55.22	0.00
One Year Ago <i>03-05-2015</i>	35.99	64.01	46.61	18.86	10.66	0.00

Intensity:



The Drought Monitor focuses on broad-scale conditions. Local conditions may vary. For more information on the Drought Monitor, go to <https://droughtmonitor.unl.edu/About.aspx>

Author:

David Miskus
 NOAA/NWS/NCEP/CPC

