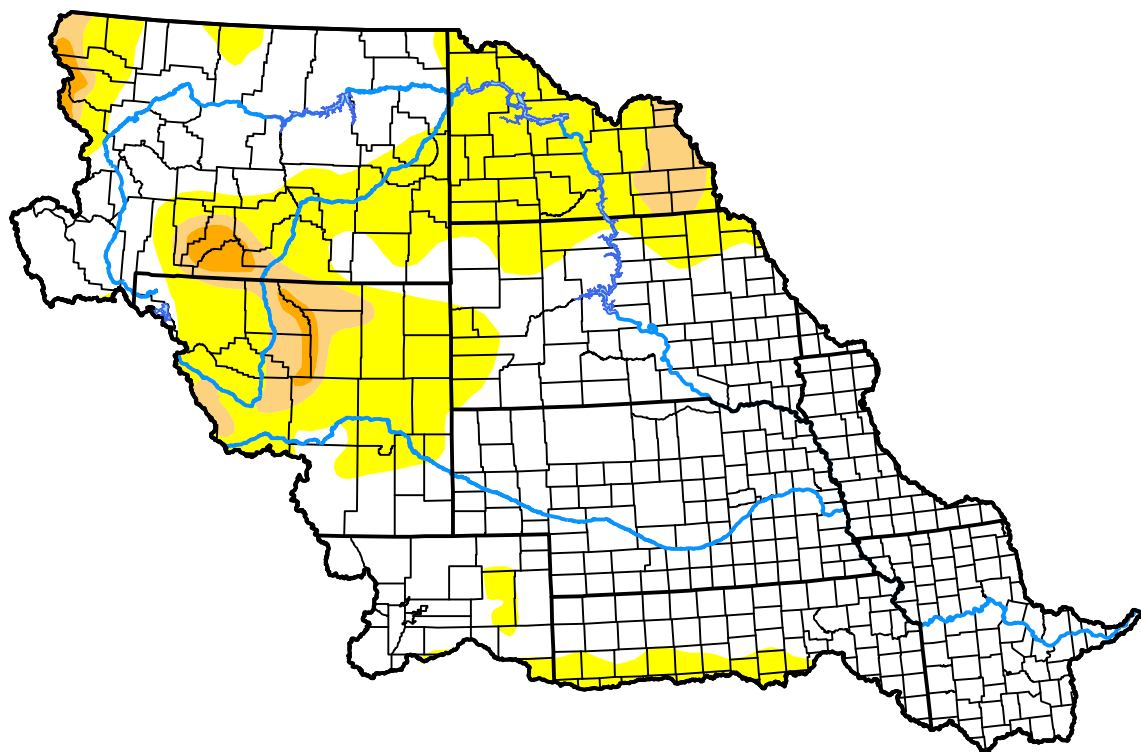


# U.S. Drought Monitor Missouri Watershed

**March 22, 2016**  
(Released Thursday, Mar. 24, 2016)  
Valid 8 a.m. EDT



## Drought Conditions (Percent Area)

	None	D0-D4	D1-D4	D2-D4	D3-D4	D4
<b>Current</b>	67.42	32.58	5.82	1.28	0.00	0.00
<b>Last Week</b> 03-17-2016	66.45	33.55	5.72	1.15	0.00	0.00
<b>3 Months Ago</b> 12-24-2015	76.15	23.85	5.40	1.14	0.00	0.00
<b>Start of Calendar Year</b> 12-31-2015	76.59	23.41	5.40	1.14	0.00	0.00
<b>Start of Water Year</b> 10-01-2015	65.80	34.20	6.60	3.28	0.52	0.00
<b>One Year Ago</b> 03-26-2015	54.27	45.73	5.78	0.72	0.00	0.00

## Intensity:

None	D2 Severe Drought
D0 Abnormally Dry	D3 Extreme Drought
D1 Moderate Drought	D4 Exceptional Drought

The Drought Monitor focuses on broad-scale conditions. Local conditions may vary. For more information on the Drought Monitor, go to <https://droughtmonitor.unl.edu/About.aspx>

## Author:

Brad Rippey  
U.S. Department of Agriculture



[droughtmonitor.unl.edu](https://droughtmonitor.unl.edu)