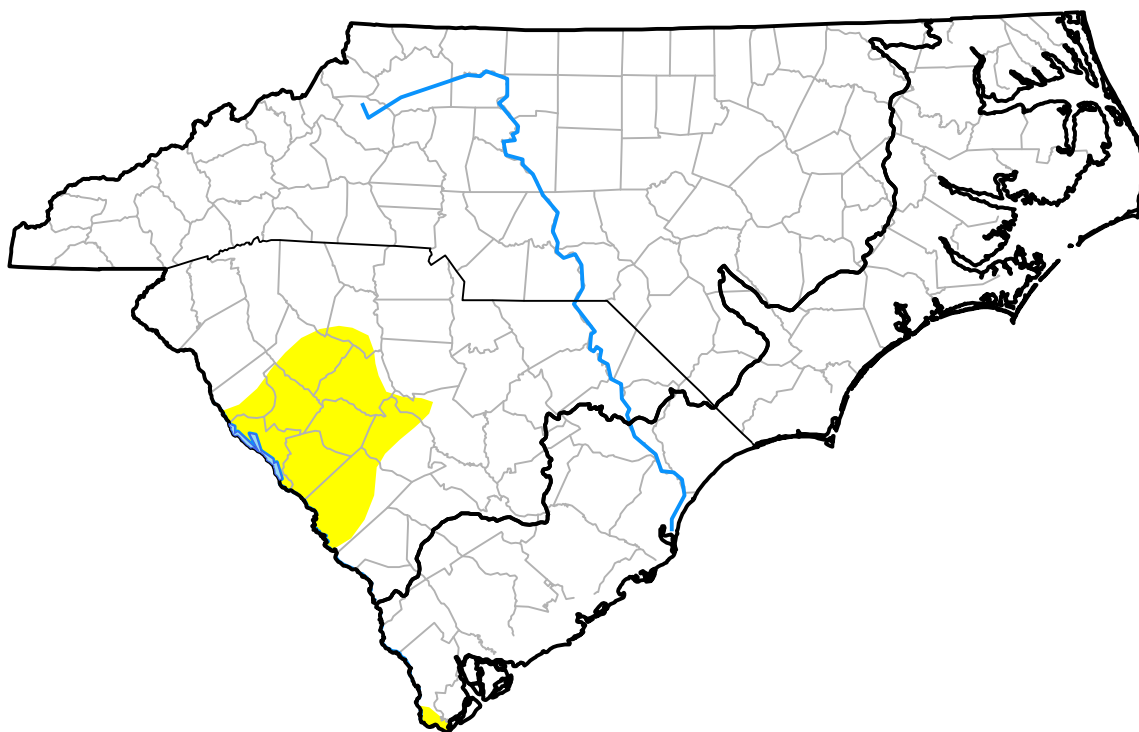


U.S. Drought Monitor

Coastal Carolinas RDEWS

March 22, 2016
(Released Thursday, Mar. 24, 2016)
 Valid 8 a.m. EDT



Drought Conditions (Percent Area)

	None	D0	D1	D2	D3	D4
Current	99.50	0.50	0.00	0.00	0.00	0.00
Last Week <i>03-17-2016</i>	99.50	0.50	0.00	0.00	0.00	0.00
3 Months Ago <i>12-24-2015</i>	99.36	0.64	0.00	0.00	0.00	0.00
Start of Calendar Year <i>12-31-2015</i>	99.36	0.64	0.00	0.00	0.00	0.00
Start of Water Year <i>10-01-2015</i>	75.74	16.82	5.34	2.10	0.00	0.00
One Year Ago <i>03-26-2015</i>	100.00	0.00	0.00	0.00	0.00	0.00

Intensity:

None	D2 Severe Drought
D0 Abnormally Dry	D3 Extreme Drought
D1 Moderate Drought	D4 Exceptional Drought

The Drought Monitor focuses on broad-scale conditions. Local conditions may vary. For more information on the Drought Monitor, go to <https://droughtmonitor.unl.edu/About.aspx>

Author:

Brad Rippey
 U.S. Department of Agriculture



droughtmonitor.unl.edu