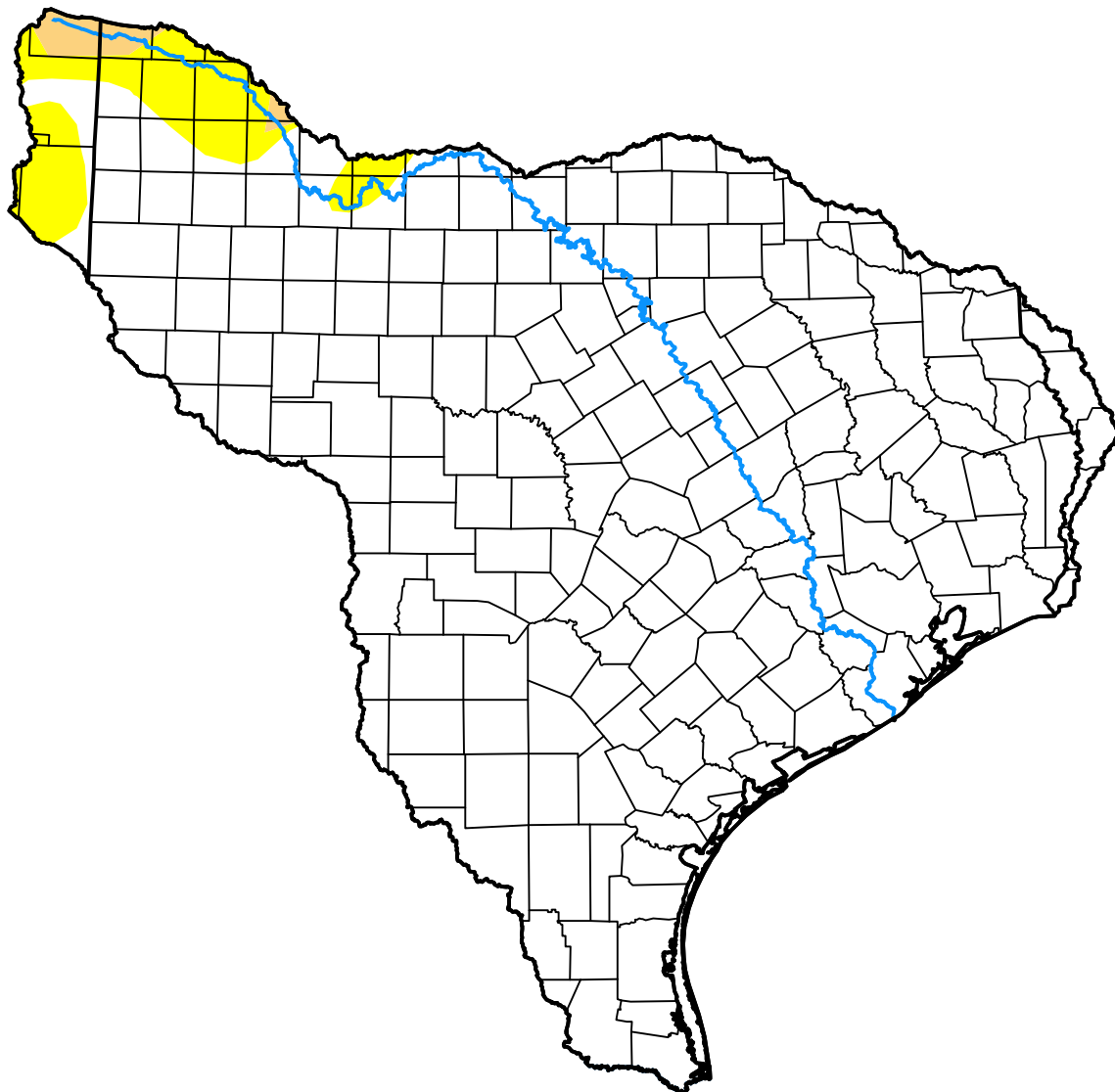


U.S. Drought Monitor

Texas-Gulf Watershed

April 19, 2016
(Released Thursday, Apr. 21, 2016)

Valid 8 a.m. EDT



Drought Conditions (Percent Area)

	None	D0-D4	D1-D4	D2-D4	D3-D4	D4
Current	94.41	5.59	0.81	0.00	0.00	0.00
Last Week <i>04-14-2016</i>	89.19	10.81	0.89	0.00	0.00	0.00
3 Months Ago <i>01-21-2016</i>	100.00	0.00	0.00	0.00	0.00	0.00
Start of Calendar Year <i>12-31-2015</i>	96.41	3.59	0.00	0.00	0.00	0.00
Start of Water Year <i>10-01-2015</i>	26.82	73.18	47.73	21.25	7.18	0.00
One Year Ago <i>04-23-2015</i>	58.80	41.20	29.71	16.22	4.97	1.16

Intensity:

- None
- D0 Abnormally Dry
- D1 Moderate Drought
- D2 Severe Drought
- D3 Extreme Drought
- D4 Exceptional Drought

The Drought Monitor focuses on broad-scale conditions. Local conditions may vary. For more information on the Drought Monitor, go to <https://droughtmonitor.unl.edu/About.aspx>

Author:

Richard Tinker
 CPC/NOAA/NWS/NCEP



droughtmonitor.unl.edu