

# U.S. Drought Monitor

# Arkansas-White-Red Watershed

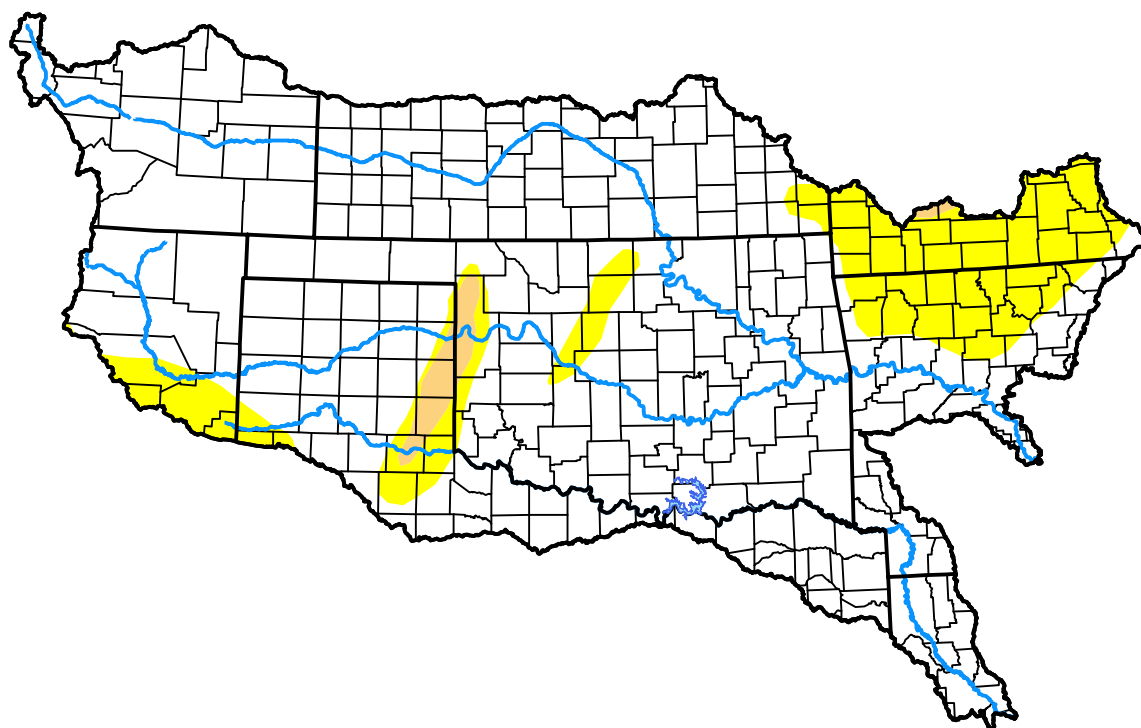
May 10, 2016

(Released Thursday, May. 12, 2016)

Valid 8 a.m. EDT

### Drought Conditions (Percent Area)

	None	D0	D1	D2	D3	D4
<b>Current</b>	84.55	14.09	1.36	0.00	0.00	0.00
<b>Last Week</b> <i>05-05-2016</i>	75.09	22.46	2.45	0.00	0.00	0.00
<b>3 Months Ago</b> <i>02-11-2016</i>	98.30	1.70	0.00	0.00	0.00	0.00
<b>Start of Calendar Year</b> <i>12-31-2015</i>	97.90	2.10	0.00	0.00	0.00	0.00
<b>Start of Water Year</b> <i>10-01-2015</i>	65.79	19.38	5.79	5.08	3.97	0.00
<b>One Year Ago</b> <i>05-14-2015</i>	37.04	19.54	28.53	12.34	2.55	0.00



### Intensity:



The Drought Monitor focuses on broad-scale conditions. Local conditions may vary. For more information on the Drought Monitor, go to <https://droughtmonitor.unl.edu/About.aspx>

### Author:

Brian Fuchs  
National Drought Mitigation Center



[droughtmonitor.unl.edu](https://droughtmonitor.unl.edu)