

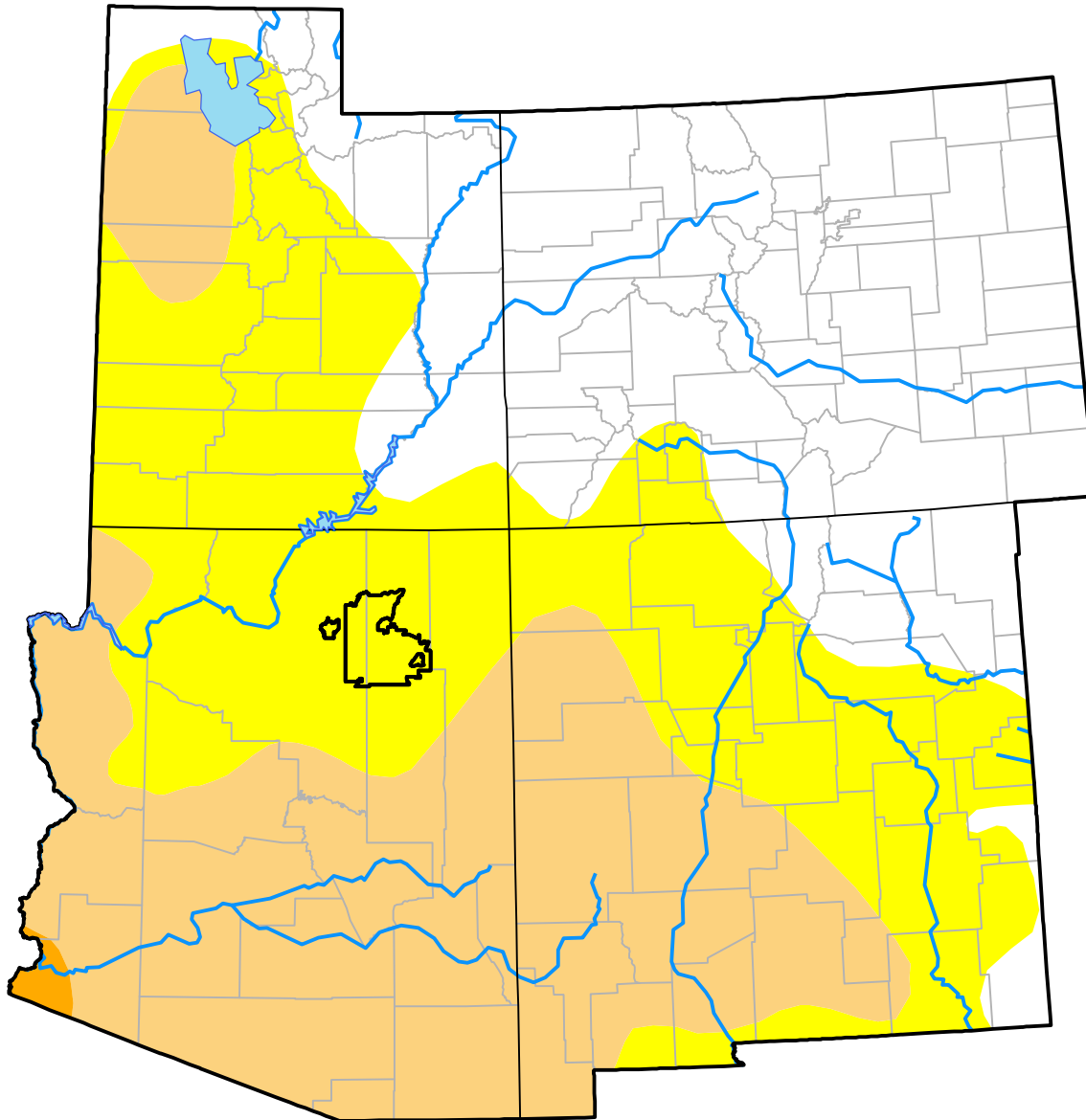
Opportunity RDEWS and Surrounding Areas

(Released Thursday, May. 12, 2016)

Valid 8 a.m. EDT

Drought Conditions (Percent Area)

	None	D0	D1	D2	D3	D4
Current	34.71	33.51	31.46	0.31	0.00	0.00
Last Week <i>05-05-2016</i>	30.20	37.36	32.12	0.31	0.00	0.00
3 Months Ago <i>02-11-2016</i>	67.68	21.98	7.79	2.56	0.00	0.00
Start of Calendar Year <i>12-31-2015</i>	51.56	29.75	13.88	4.81	0.00	0.00
Start of Water Year <i>10-01-2015</i>	38.97	29.35	25.44	6.24	0.00	0.00
One Year Ago <i>05-14-2015</i>	19.81	10.95	43.04	24.21	2.00	0.00



Intensity:

- None
- D0 Abnormally Dry
- D1 Moderate Drought
- D2 Severe Drought
- D3 Extreme Drought
- D4 Exceptional Drought

The Drought Monitor focuses on broad-scale conditions. Local conditions may vary. For more information on the Drought Monitor, go to <https://droughtmonitor.unl.edu/About.aspx>

Author:

Brian Fuchs
National Drought Mitigation Center

