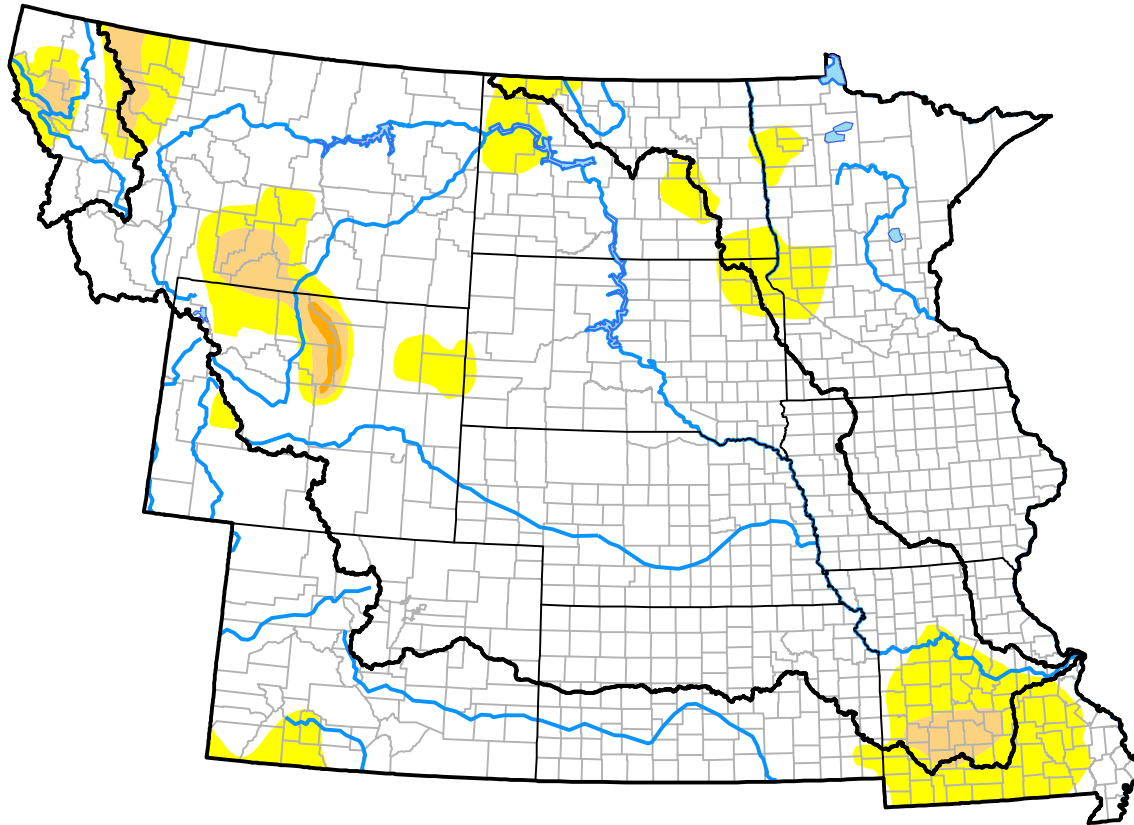


# U.S. Drought Monitor

## Missouri River Basin RDEWS

**May 10, 2016**  
 (Released Thursday, May. 12, 2016)  
 Valid 8 a.m. EDT



*Drought Conditions (Percent Area)*

|  | None  | D0    | D1    | D2   | D3   | D4   |
|--|-------|-------|-------|------|------|------|
| <b>Current</b>                                     | 85.99 | 10.06 | 3.63  | 0.33 | 0.00 | 0.00 |
| <b>Last Week</b><br><i>05-05-2016</i>              | 83.93 | 12.11 | 3.63  | 0.33 | 0.00 | 0.00 |
| <b>3 Months Ago</b><br><i>02-11-2016</i>           | 73.48 | 19.90 | 6.46  | 0.16 | 0.00 | 0.00 |
| <b>Start of Calendar Year</b><br><i>12-31-2015</i> | 76.46 | 18.00 | 4.26  | 1.28 | 0.00 | 0.00 |
| <b>Start of Water Year</b><br><i>10-01-2015</i>    | 65.67 | 27.60 | 3.32  | 2.76 | 0.66 | 0.00 |
| <b>One Year Ago</b><br><i>05-14-2015</i>           | 59.54 | 27.95 | 11.28 | 1.22 | 0.00 | 0.00 |

*Intensity:*



*The Drought Monitor focuses on broad-scale conditions. Local conditions may vary. For more information on the Drought Monitor, go to <https://droughtmonitor.unl.edu/About.aspx>*

*Author:*

Brian Fuchs  
 National Drought Mitigation Center



**droughtmonitor.unl.edu**