

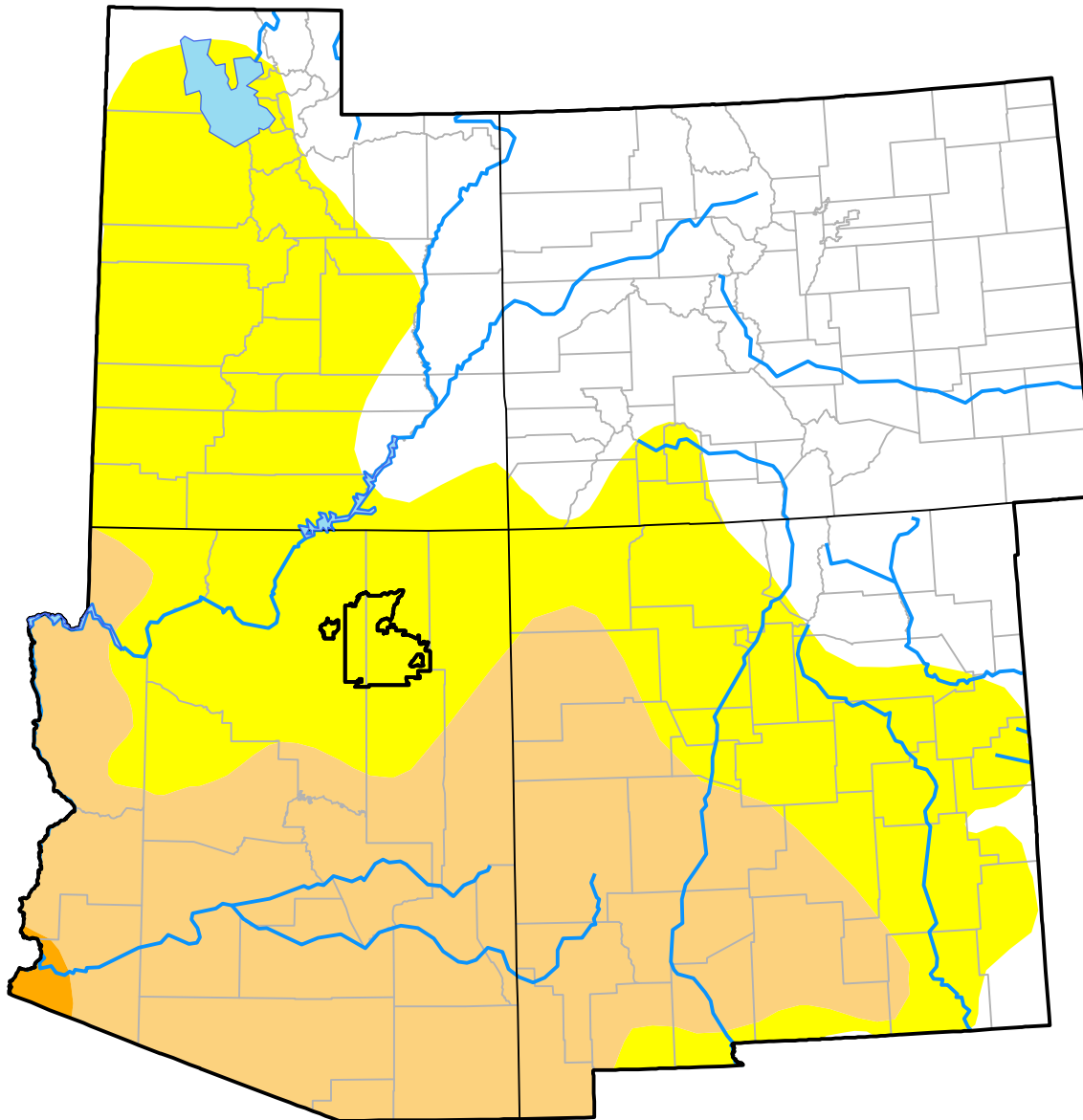
U.S. Drought Monitor

Hopi RDEWS

May 17, 2016
 (Released Thursday, May. 19, 2016)
 Valid 8 a.m. EDT

Drought Conditions (Percent Area)

	None	D0-D4	D1-D4	D2-D4	D3-D4	D4
Current	0.00	100.00	0.00	0.00	0.00	0.00
Last Week <i>05-12-2016</i>	0.00	100.00	0.00	0.00	0.00	0.00
3 Months Ago <i>02-18-2016</i>	100.00	0.00	0.00	0.00	0.00	0.00
Start of Calendar Year <i>12-31-2015</i>	0.00	100.00	0.00	0.00	0.00	0.00
Start of Water Year <i>10-01-2015</i>	0.00	100.00	99.77	0.00	0.00	0.00
One Year Ago <i>05-21-2015</i>	0.00	100.00	100.00	24.05	0.00	0.00



Intensity:

- None
- D0 Abnormally Dry
- D1 Moderate Drought
- D2 Severe Drought
- D3 Extreme Drought
- D4 Exceptional Drought

The Drought Monitor focuses on broad-scale conditions. Local conditions may vary. For more information on the Drought Monitor, go to <https://droughtmonitor.unl.edu/About.aspx>

Author:

David Simeral
 Western Regional Climate Center

