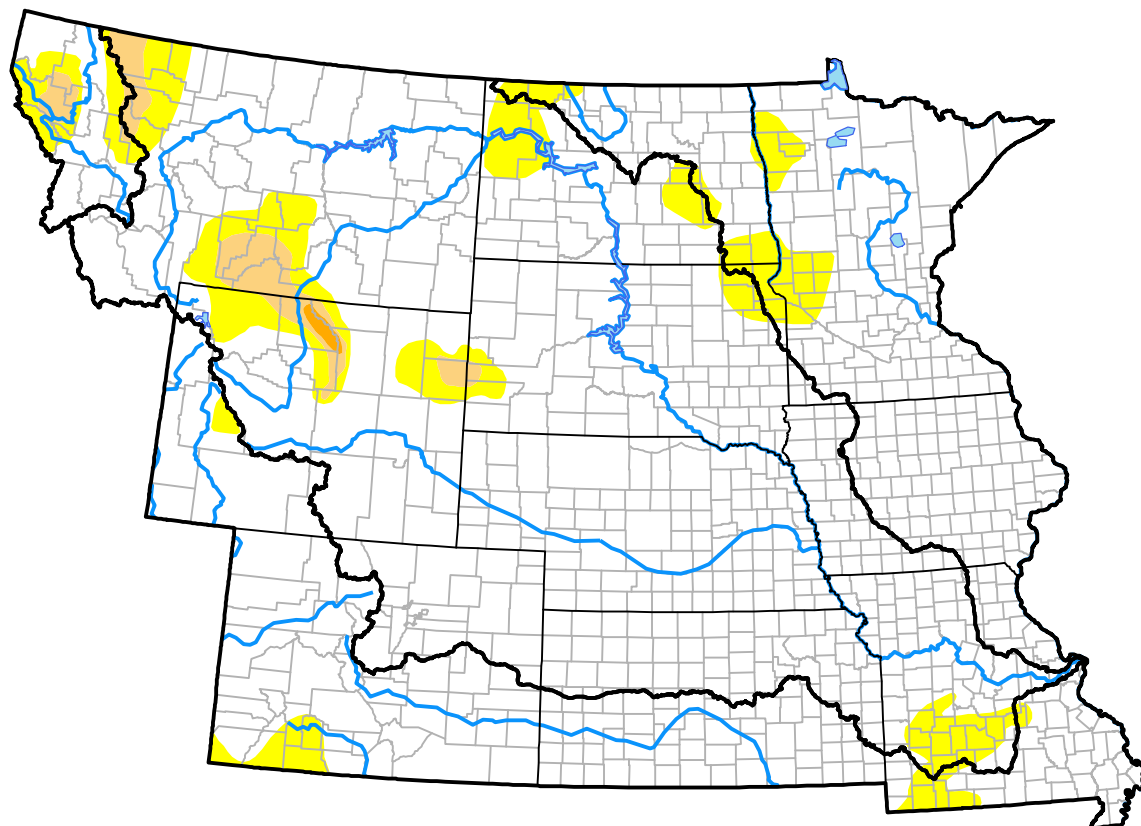


U.S. Drought Monitor

Missouri River Basin RDEWS

May 17, 2016
 (Released Thursday, May. 19, 2016)
 Valid 8 a.m. EDT



Drought Conditions (Percent Area)

	None	D0-D4	D1-D4	D2-D4	D3-D4	D4
Current	88.50	11.50	2.74	0.20	0.00	0.00
Last Week <i>05-12-2016</i>	85.99	14.01	3.96	0.33	0.00	0.00
3 Months Ago <i>02-18-2016</i>	72.88	27.12	6.62	0.08	0.00	0.00
Start of Calendar Year <i>12-31-2015</i>	76.46	23.54	5.54	1.28	0.00	0.00
Start of Water Year <i>10-01-2015</i>	65.67	34.33	6.73	3.42	0.66	0.00
One Year Ago <i>05-21-2015</i>	72.64	27.36	5.32	0.92	0.00	0.00

Intensity:



The Drought Monitor focuses on broad-scale conditions. Local conditions may vary. For more information on the Drought Monitor, go to <https://droughtmonitor.unl.edu/About.aspx>

Author:

David Simeral
 Western Regional Climate Center

