

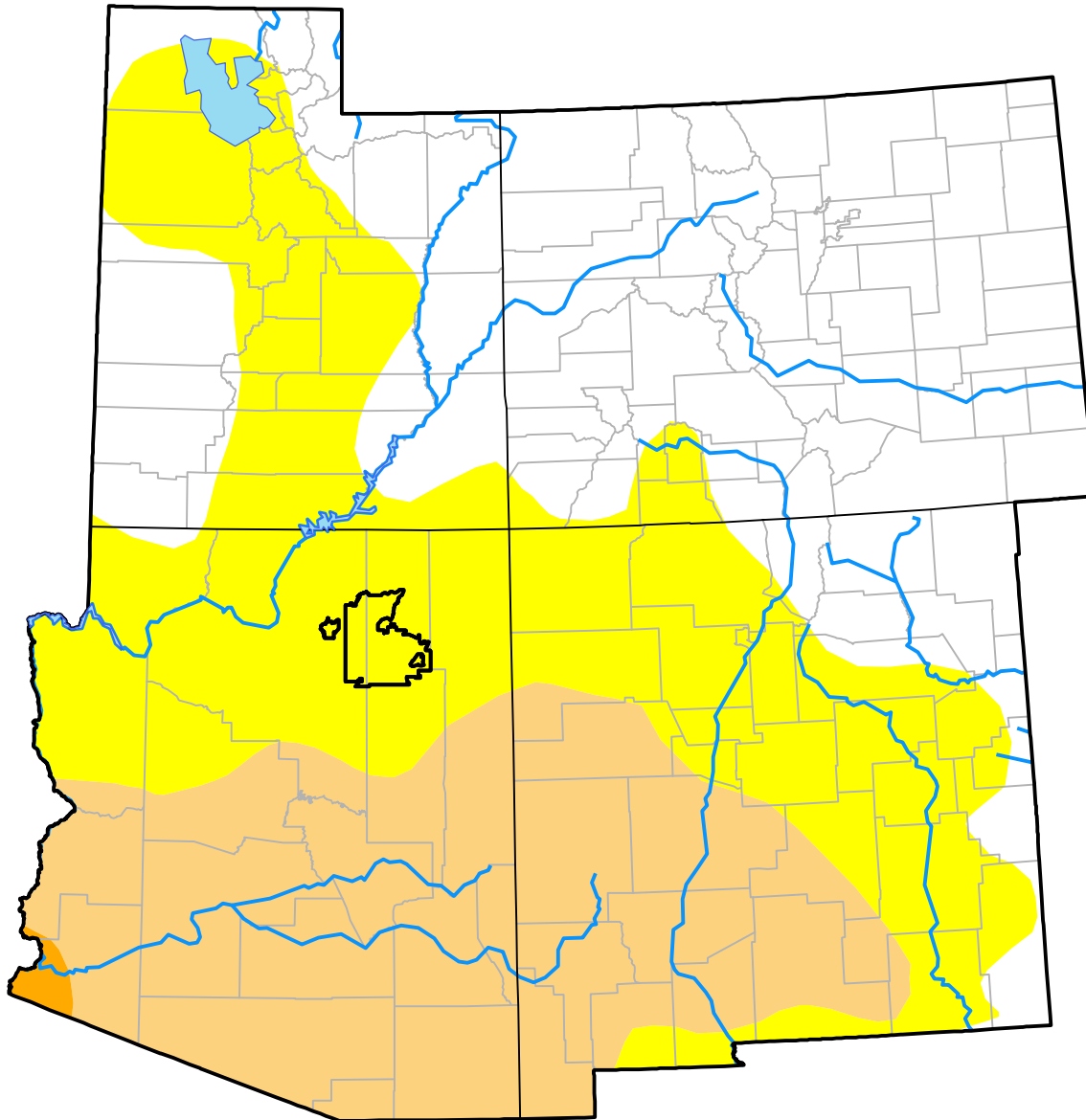
# Opportunity RDEWS and Surrounding Areas

(Released Thursday, Jun. 2, 2016)

Valid 8 a.m. EDT

Drought Conditions (Percent Area)

	None	D0	D1	D2	D3	D4
<b>Current</b>	39.47	34.04	26.17	0.31	0.00	0.00
<b>Last Week</b> <i>05-26-2016</i>	35.46	36.23	27.99	0.31	0.00	0.00
<b>3 Months Ago</b> <i>03-03-2016</i>	54.29	35.22	7.93	2.56	0.00	0.00
<b>Start of Calendar Year</b> <i>12-31-2015</i>	51.56	29.75	13.88	4.81	0.00	0.00
<b>Start of Water Year</b> <i>10-01-2015</i>	38.97	29.35	25.44	6.24	0.00	0.00
<b>One Year Ago</b> <i>06-04-2015</i>	30.33	15.54	35.98	16.29	1.86	0.00



**Intensity:**

- None
- D0 Abnormally Dry
- D1 Moderate Drought
- D2 Severe Drought
- D3 Extreme Drought
- D4 Exceptional Drought

The Drought Monitor focuses on broad-scale conditions. Local conditions may vary. For more information on the Drought Monitor, go to <https://droughtmonitor.unl.edu/About.aspx>

**Author:**

Mark Svoboda  
National Drought Mitigation Center

