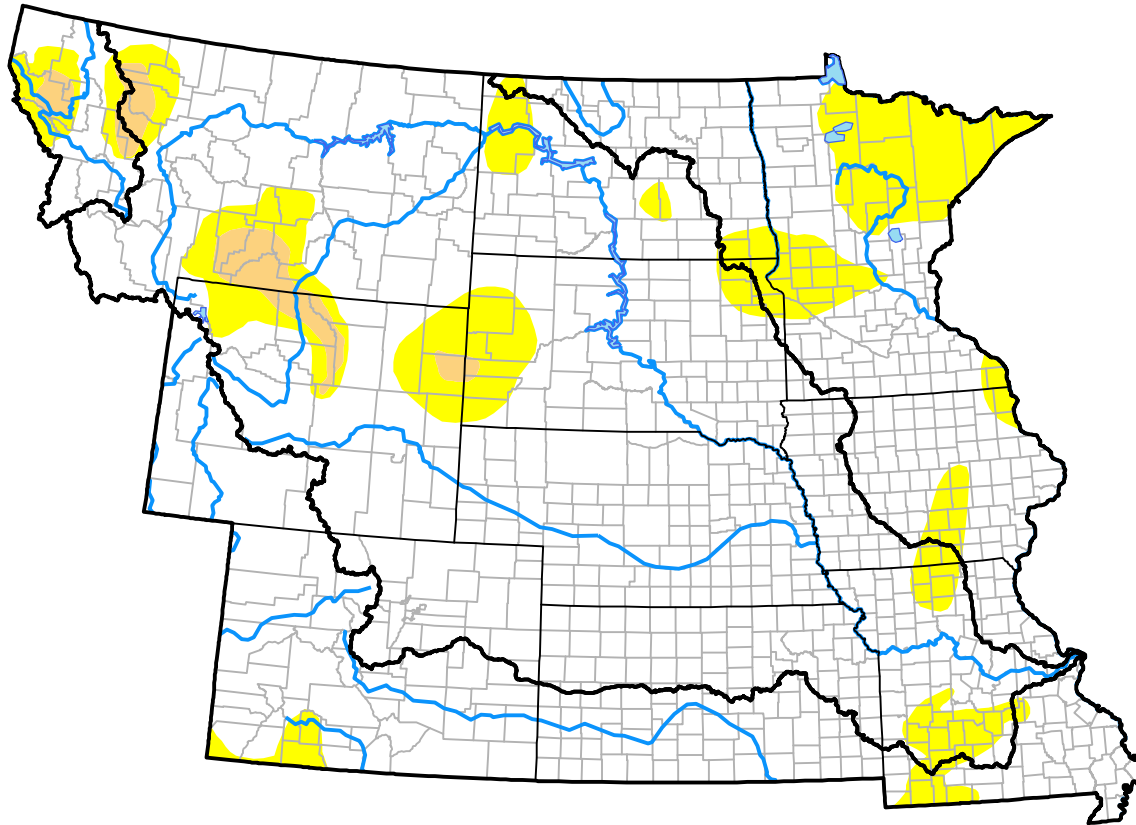


U.S. Drought Monitor

Missouri River Basin RDEWS

May 31, 2016
 (Released Thursday, Jun. 2, 2016)
 Valid 8 a.m. EDT



Drought Conditions (Percent Area)

	None	D0	D1	D2	D3	D4
Current	86.41	10.98	2.60	0.00	0.00	0.00
Last Week <i>05-26-2016</i>	88.50	8.76	2.54	0.20	0.00	0.00
3 Months Ago <i>03-03-2016</i>	69.48	24.92	5.00	0.60	0.00	0.00
Start of Calendar Year <i>12-31-2015</i>	76.46	18.00	4.26	1.28	0.00	0.00
Start of Water Year <i>10-01-2015</i>	65.67	27.60	3.32	2.76	0.66	0.00
One Year Ago <i>06-04-2015</i>	80.58	16.23	3.19	0.00	0.00	0.00

Intensity:



The Drought Monitor focuses on broad-scale conditions. Local conditions may vary. For more information on the Drought Monitor, go to <https://droughtmonitor.unl.edu/About.aspx>

Author:

Mark Svoboda
 National Drought Mitigation Center

