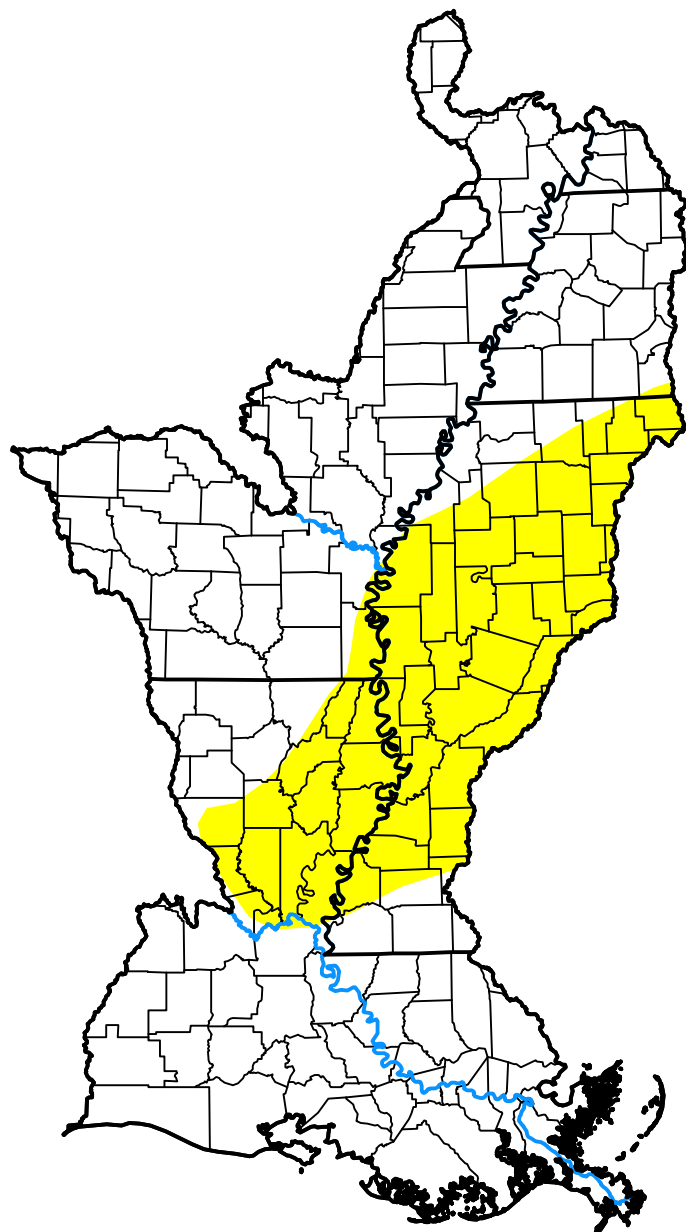


U.S. Drought Monitor

Lower Mississippi Watershed

June 7, 2016
 (Released Thursday, Jun. 9, 2016)
 Valid 8 a.m. EDT



Drought Conditions (Percent Area)

	None	D0-D4	D1-D4	D2-D4	D3-D4	D4
Current	74.10	25.90	0.00	0.00	0.00	0.00
Last Week <i>06-02-2016</i>	74.12	25.88	0.00	0.00	0.00	0.00
3 Months Ago <i>03-10-2016</i>	64.82	35.18	0.00	0.00	0.00	0.00
Start of Calendar Year <i>12-31-2015</i>	100.00	0.00	0.00	0.00	0.00	0.00
Start of Water Year <i>10-01-2015</i>	23.06	76.94	56.11	30.48	5.80	0.00
One Year Ago <i>06-11-2015</i>	100.00	0.00	0.00	0.00	0.00	0.00

Intensity:



The Drought Monitor focuses on broad-scale conditions. Local conditions may vary. For more information on the Drought Monitor, go to <https://droughtmonitor.unl.edu/About.aspx>

Author:

Deborah Bathke
 National Drought Mitigation Center



droughtmonitor.unl.edu