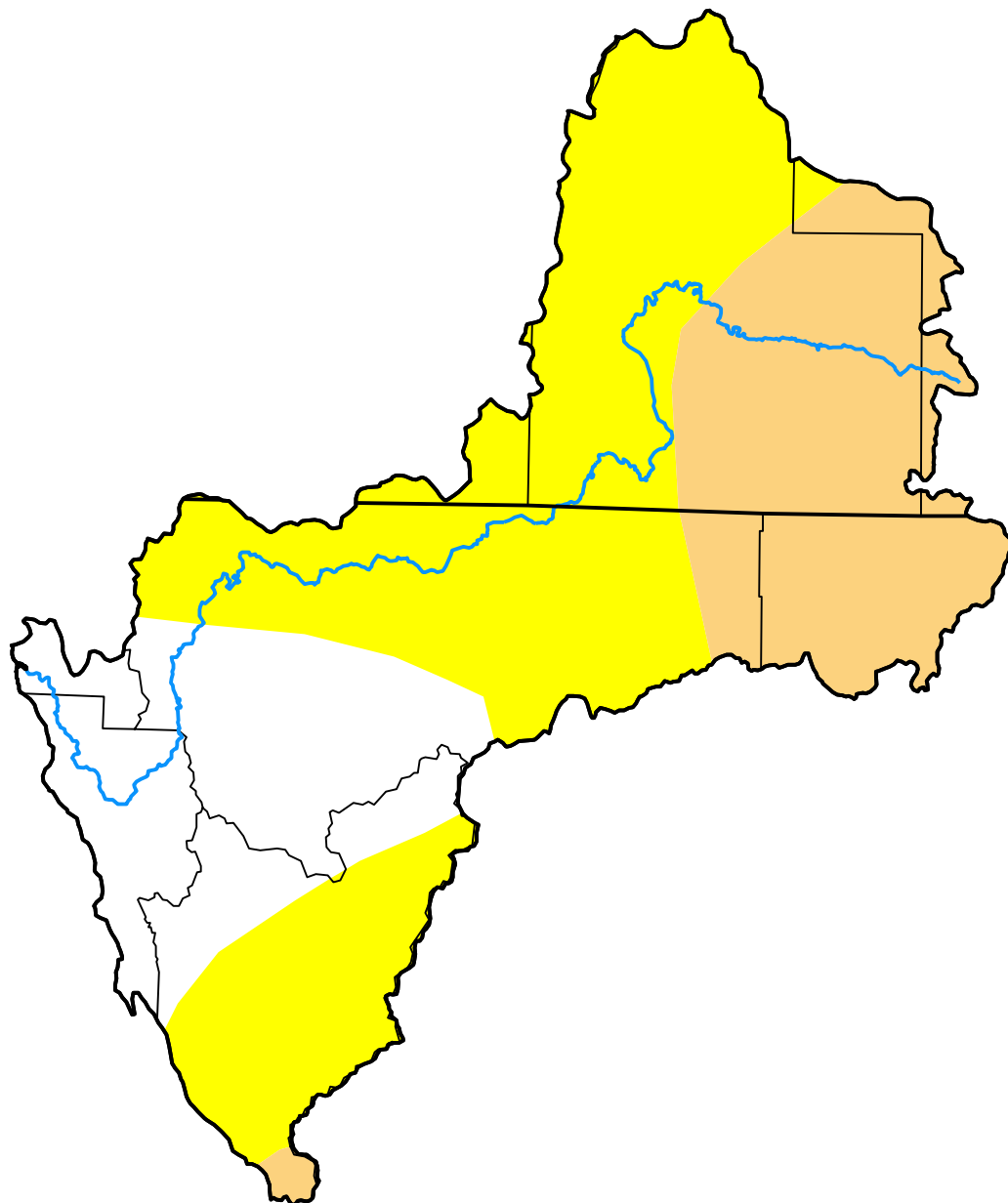


U.S. Drought Monitor

Klamath River Basin

June 7, 2016
 (Released Thursday, Jun. 9, 2016)
 Valid 8 a.m. EDT



Drought Conditions (Percent Area)

	None	D0	D1	D2	D3	D4
Current	23.92	49.67	26.40	0.00	0.00	0.00
Last Week <i>05-31-2016</i>	51.30	22.29	26.40	0.00	0.00	0.00
3 Months Ago <i>03-08-2016</i>	0.23	8.57	39.24	51.95	0.00	0.00
Start of Calendar Year <i>12-29-2015</i>	0.00	0.00	13.00	48.21	38.79	0.00
Start of Water Year <i>09-29-2015</i>	0.00	0.00	0.00	56.55	43.45	0.00
One Year Ago <i>06-09-2015</i>	0.00	0.00	1.73	54.82	42.05	1.40

Intensity:

- None
- D0 Abnormally Dry
- D1 Moderate Drought
- D2 Severe Drought
- D3 Extreme Drought
- D4 Exceptional Drought

The Drought Monitor focuses on broad-scale conditions. Local conditions may vary. For more information on the Drought Monitor, go to <https://droughtmonitor.unl.edu/About.aspx>

Author:

Deborah Bathke
 National Drought Mitigation Center

