

U.S. Drought Monitor

Hopi RDEWS

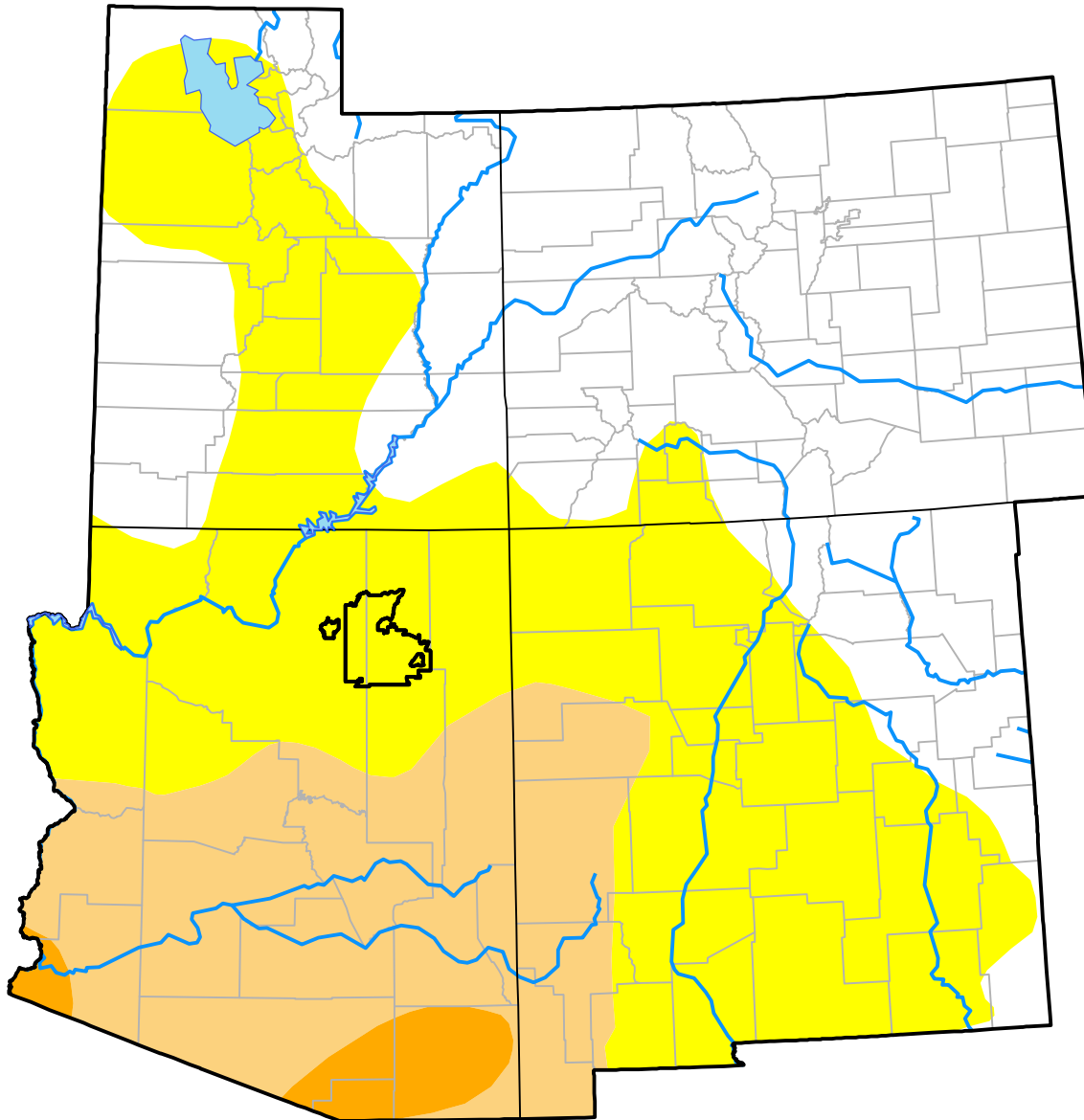
June 14, 2016

(Released Thursday, Jun. 16, 2016)

Valid 8 a.m. EDT

Drought Conditions (Percent Area)

	None	D0	D1	D2	D3	D4
Current	0.00	100.00	0.00	0.00	0.00	0.00
Last Week <i>06-09-2016</i>	0.00	100.00	0.00	0.00	0.00	0.00
3 Months Ago <i>03-17-2016</i>	0.07	99.93	0.00	0.00	0.00	0.00
Start of Calendar Year <i>12-31-2015</i>	0.00	100.00	0.00	0.00	0.00	0.00
Start of Water Year <i>10-01-2015</i>	0.00	0.23	99.77	0.00	0.00	0.00
One Year Ago <i>06-18-2015</i>	0.00	0.16	85.35	14.49	0.00	0.00



Intensity:

- None
- D0 Abnormally Dry
- D1 Moderate Drought
- D2 Severe Drought
- D3 Extreme Drought
- D4 Exceptional Drought

The Drought Monitor focuses on broad-scale conditions. Local conditions may vary. For more information on the Drought Monitor, go to <https://droughtmonitor.unl.edu/About.aspx>

Author:

Chris Fenimore
NCEI/NESDIS/NOAA



droughtmonitor.unl.edu