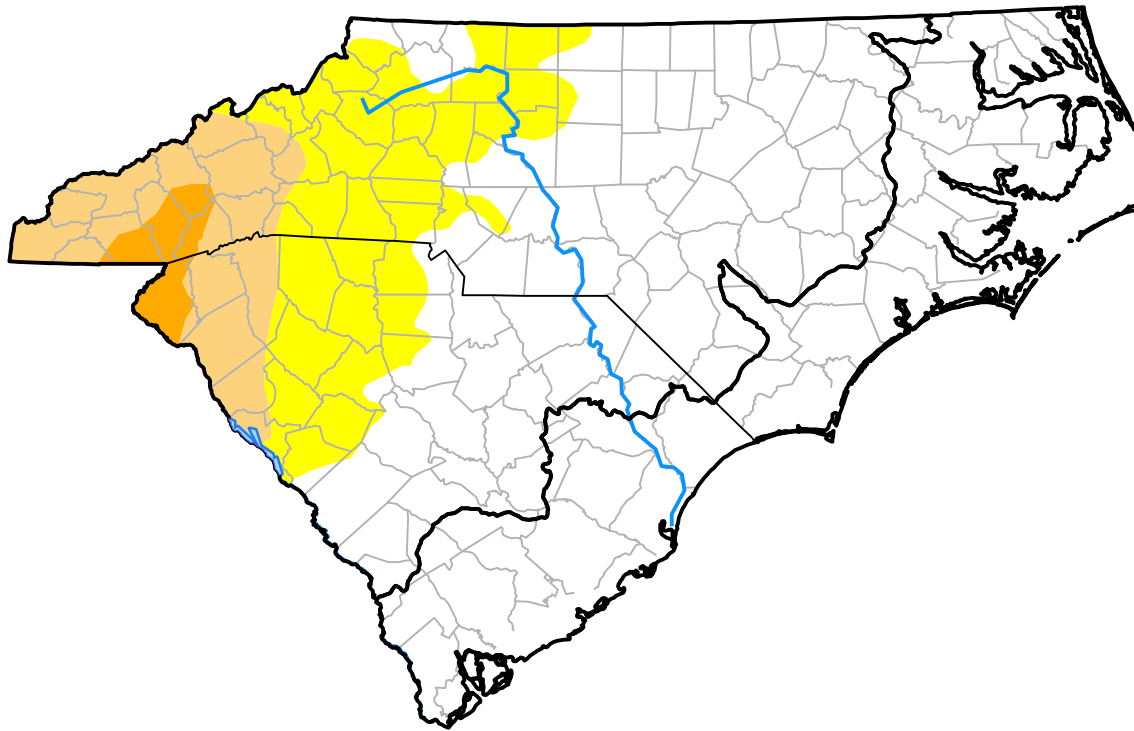


Carolinas RDEWS and Surrounding Areas

(Released Thursday, Jun. 23, 2016)
 10:00 a.m. EDT



Drought Conditions (Percent Area)

	None	D0	D1	D2	D3	D4
Current	71.49	17.70	8.80	2.01	0.00	0.00
Last Week <i>06-16-2016</i>	79.31	10.21	10.48	0.00	0.00	0.00
3 Months Ago <i>03-24-2016</i>	94.22	5.78	0.00	0.00	0.00	0.00
Start of Calendar Year <i>12-31-2015</i>	99.87	0.13	0.00	0.00	0.00	0.00
Start of Water Year <i>10-01-2015</i>	32.21	44.69	17.73	5.37	0.00	0.00
One Year Ago <i>06-25-2015</i>	39.99	43.41	16.61	0.00	0.00	0.00

Intensity:

- None
- D0 Abnormally Dry
- D1 Moderate Drought
- D2 Severe Drought
- D3 Extreme Drought
- D4 Exceptional Drought

The Drought Monitor focuses on broad-scale conditions. Local conditions may vary. For more information on the Drought Monitor, go to <https://droughtmonitor.unl.edu/About.aspx>

Author:

Eric Luebehusen
 U.S. Department of Agriculture

