

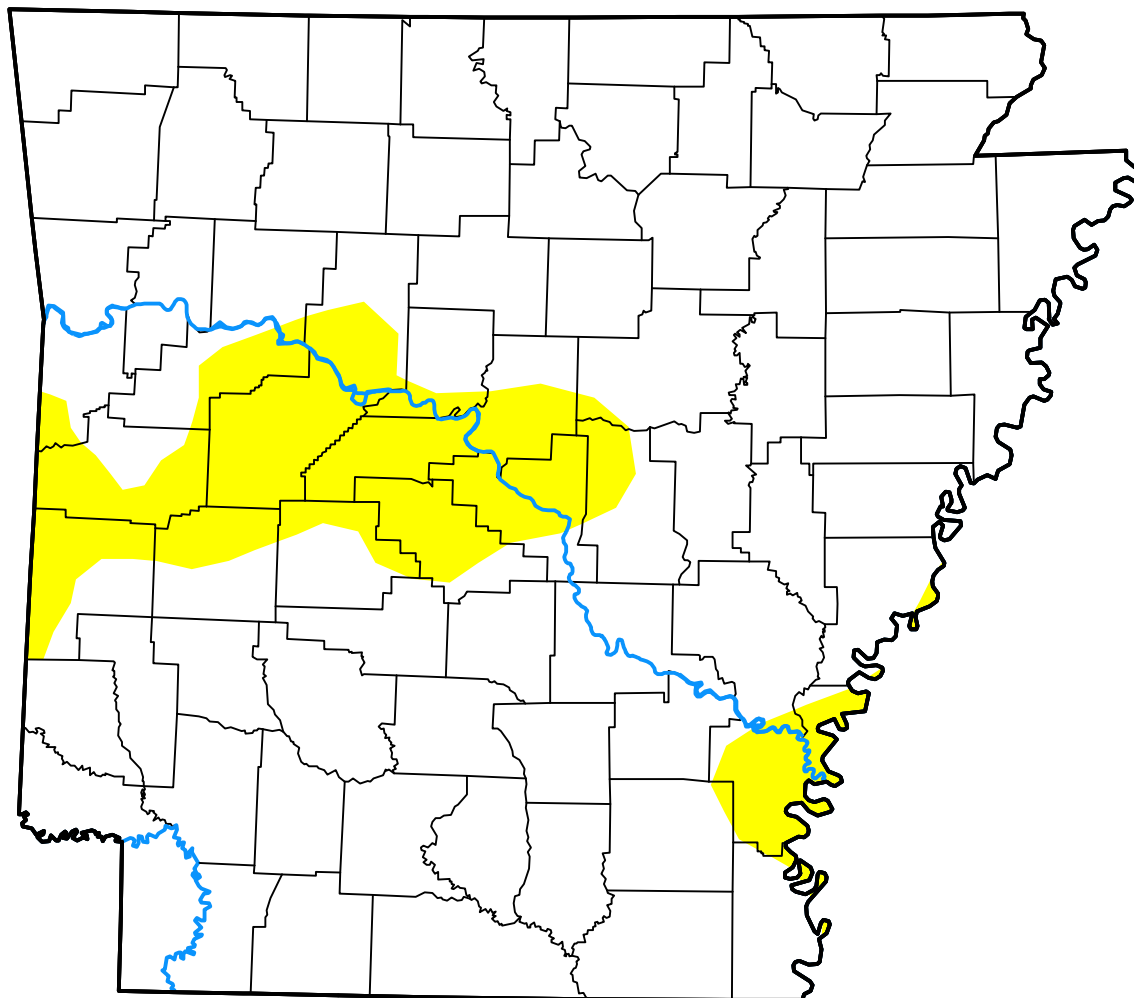
U.S. Drought Monitor Arkansas

July 5, 2016
(Released Thursday, Jul. 7, 2016)

Valid 8 a.m. EDT

Drought Conditions (Percent Area)

	None	D0-D4	D1-D4	D2-D4	D3-D4	D4
Current	86.83	13.17	0.00	0.00	0.00	0.00
Last Week <i>06-30-2016</i>	94.91	5.09	0.00	0.00	0.00	0.00
3 Months Ago <i>04-07-2016</i>	93.64	6.36	0.00	0.00	0.00	0.00
Start of Calendar Year <i>12-31-2015</i>	100.00	0.00	0.00	0.00	0.00	0.00
Start of Water Year <i>10-01-2015</i>	39.30	60.70	42.41	16.89	4.64	0.00
One Year Ago <i>07-09-2015</i>	100.00	0.00	0.00	0.00	0.00	0.00



Intensity:

None	D2 Severe Drought
D0 Abnormally Dry	D3 Extreme Drought
D1 Moderate Drought	D4 Exceptional Drought

The Drought Monitor focuses on broad-scale conditions. Local conditions may vary. For more information on the Drought Monitor, go to <https://droughtmonitor.unl.edu/About.aspx>

Author:

David Miskus
NOAA/NWS/NCEP/CPC



droughtmonitor.unl.edu