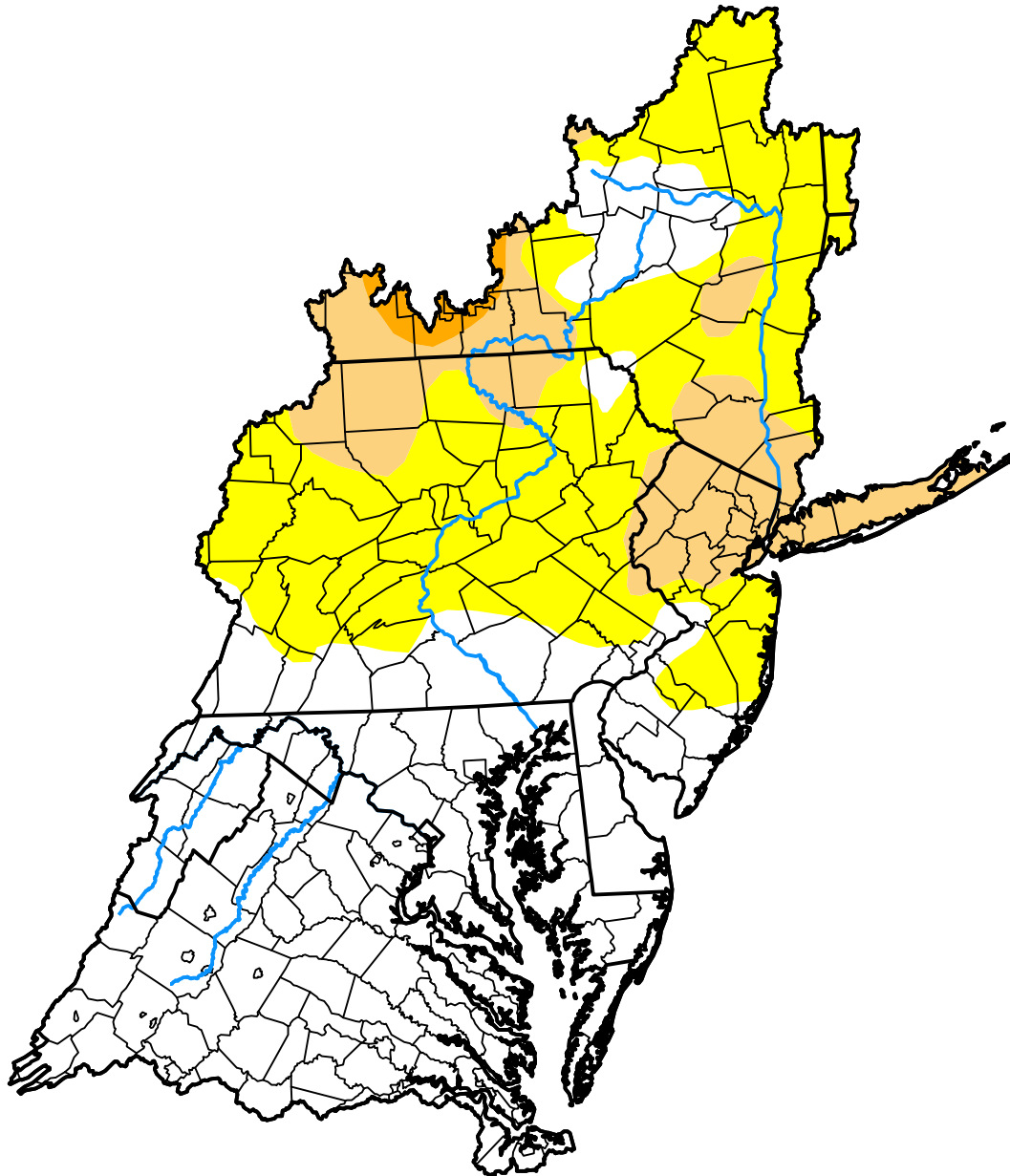


U.S. Drought Monitor

Mid Atlantic Watershed

July 12, 2016
 (Released Thursday, Jul. 14, 2016)
 Valid 8 a.m. EDT



Drought Conditions (Percent Area)

	None	D0-D4	D1-D4	D2-D4	D3-D4	D4
Current	51.49	48.51	15.17	0.95	0.00	0.00
Last Week <i>07-07-2016</i>	49.85	50.15	12.46	0.00	0.00	0.00
3 Months Ago <i>04-14-2016</i>	88.21	11.79	0.00	0.00	0.00	0.00
Start of Calendar Year <i>12-31-2015</i>	77.68	22.32	2.91	0.00	0.00	0.00
Start of Water Year <i>10-01-2015</i>	48.24	51.76	5.78	0.00	0.00	0.00
One Year Ago <i>07-16-2015</i>	95.04	4.96	1.26	0.00	0.00	0.00

Intensity:

- None
- D0 Abnormally Dry
- D1 Moderate Drought
- D2 Severe Drought
- D3 Extreme Drought
- D4 Exceptional Drought

The Drought Monitor focuses on broad-scale conditions. Local conditions may vary. For more information on the Drought Monitor, go to <https://droughtmonitor.unl.edu/About.aspx>

Author:

David Miskus
 NOAA/NWS/NCEP/CPC

