

U.S. Drought Monitor

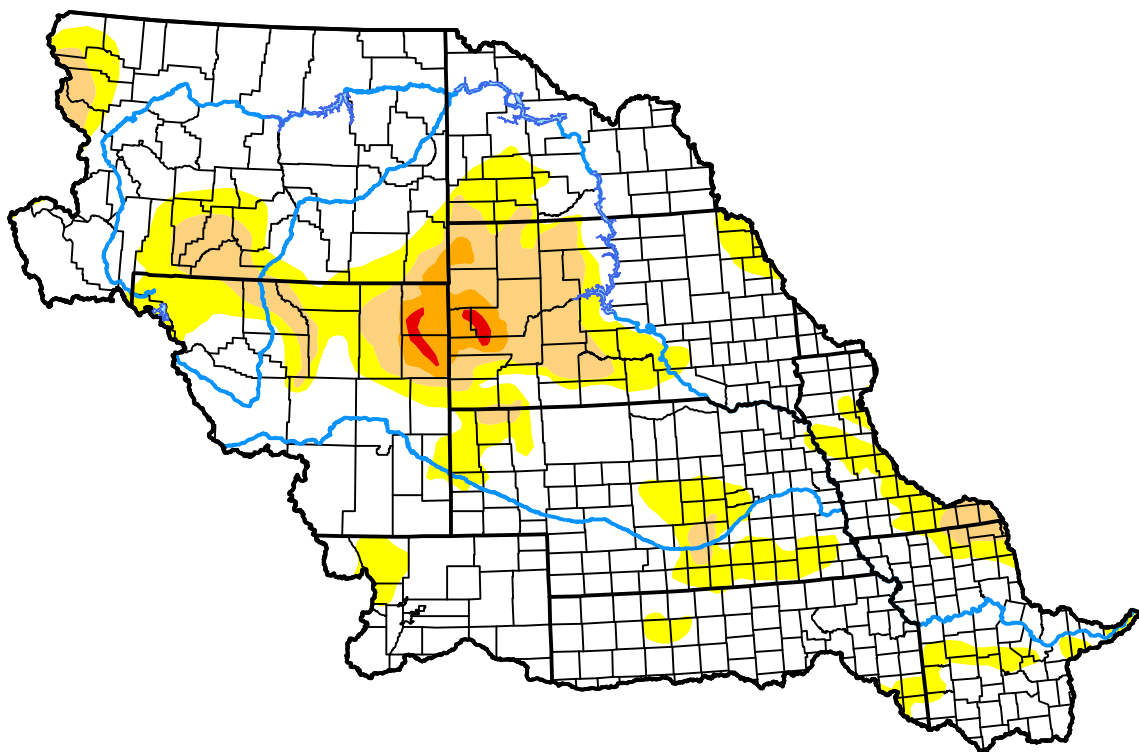
Missouri Watershed

July 12, 2016
 (Released Thursday, Jul. 14, 2016)

Valid 8 a.m. EDT

Drought Conditions (Percent Area)

	None	D0-D4	D1-D4	D2-D4	D3-D4	D4
Current	73.20	26.80	10.20	1.91	0.28	0.00
Last Week <i>07-07-2016</i>	70.17	29.83	10.89	1.72	0.28	0.00
3 Months Ago <i>04-14-2016</i>	57.09	42.91	9.64	0.91	0.00	0.00
Start of Calendar Year <i>12-31-2015</i>	76.59	23.41	5.40	1.14	0.00	0.00
Start of Water Year <i>10-01-2015</i>	65.80	34.20	6.60	3.28	0.52	0.00
One Year Ago <i>07-16-2015</i>	77.74	22.26	7.69	2.45	0.08	0.00



Intensity:

- None
- D0 Abnormally Dry
- D1 Moderate Drought
- D2 Severe Drought
- D3 Extreme Drought
- D4 Exceptional Drought

The Drought Monitor focuses on broad-scale conditions. Local conditions may vary. For more information on the Drought Monitor, go to <https://droughtmonitor.unl.edu/About.aspx>

Author:

David Miskus
 NOAA/NWS/NCEP/CPC



droughtmonitor.unl.edu