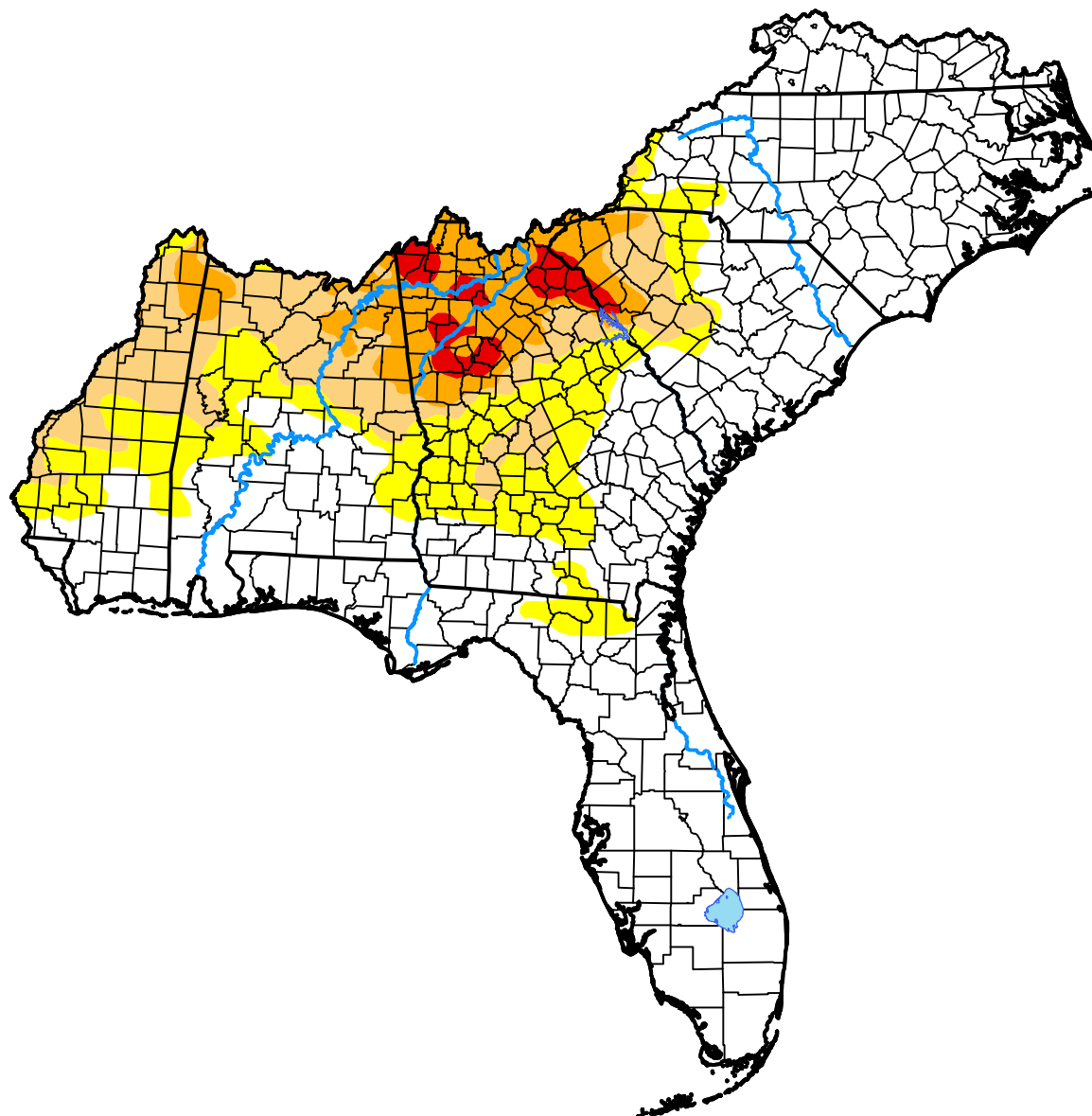


# South Atlantic-Gulf Watershed

July 19, 2016

(Released Thursday, Jul. 21, 2016)

Valid 8 a.m. EDT



Intensity:



*The Drought Monitor focuses on broad-scale conditions. Local conditions may vary. For more information on the Drought Monitor, go to <https://droughtmonitor.unl.edu/About.aspx>*

Author:

Chris Fenimore  
NCEI/NESDIS/NOAA



[droughtmonitor.unl.edu](https://droughtmonitor.unl.edu)