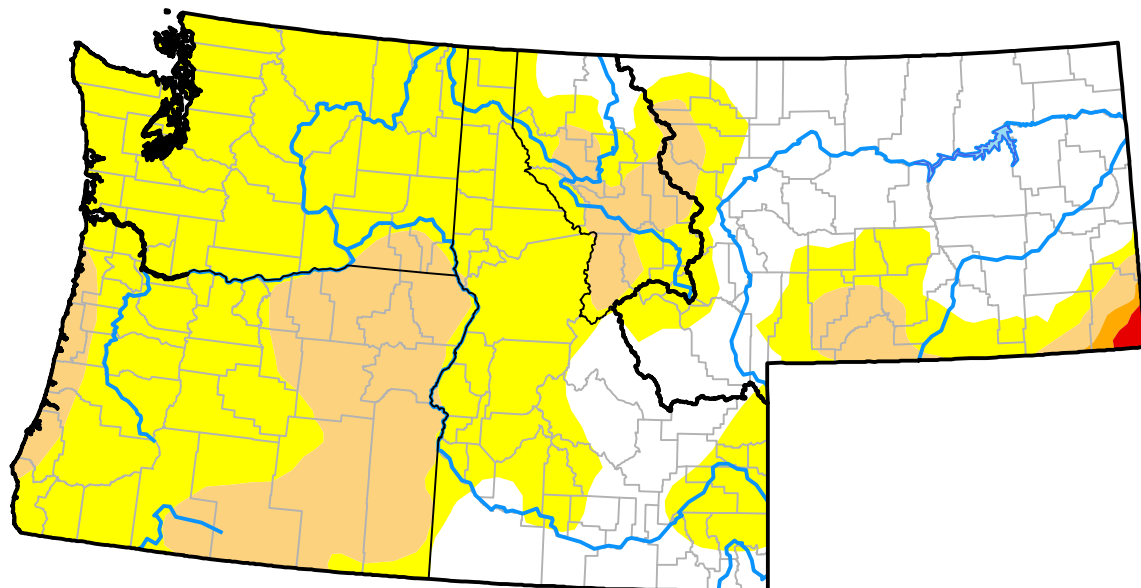


# Northwest RDEWS and Surrounding Areas

Drought Conditions (Percent Area)

	None	D0	D1	D2	D3	D4
<b>Current</b>	30.95	50.67	17.96	0.25	0.17	0.00
<b>Last Week</b> <i>07-14-2016</i>	34.72	49.13	15.97	0.17	0.00	0.00
<b>3 Months Ago</b> <i>04-21-2016</i>	75.22	15.44	8.79	0.55	0.00	0.00
<b>Start of Calendar Year</b> <i>12-31-2015</i>	34.29	16.53	19.74	18.17	11.27	0.00
<b>Start of Water Year</b> <i>10-01-2015</i>	11.37	14.69	11.55	21.78	40.61	0.00
<b>One Year Ago</b> <i>07-23-2015</i>	10.64	13.81	17.45	43.20	14.91	0.00



Intensity:

- None
- D0 Abnormally Dry
- D1 Moderate Drought
- D2 Severe Drought
- D3 Extreme Drought
- D4 Exceptional Drought

The Drought Monitor focuses on broad-scale conditions. Local conditions may vary. For more information on the Drought Monitor, go to <https://droughtmonitor.unl.edu/About.aspx>

Author:

Chris Fenimore  
NCEI/NESDIS/NOAA

