

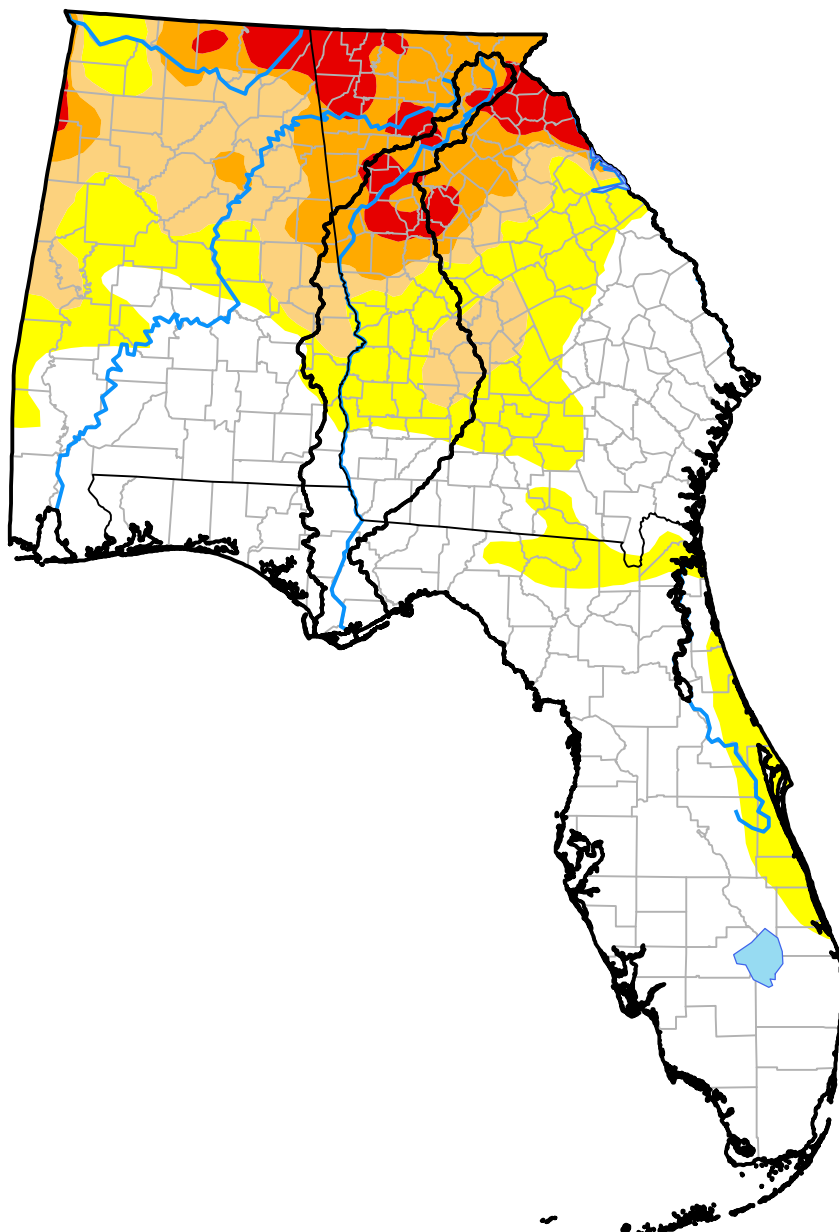
U.S. Drought Monitor

ACF River Basin RDEWS

July 26, 2016

(Released Thursday, Jul. 28, 2016)

Valid 8 a.m. EDT



Drought Conditions (Percent Area)

	None	D0	D1	D2	D3	D4
Current	30.96	29.80	14.60	16.43	8.21	0.00
Last Week 07-21-2016	30.56	34.76	10.04	17.29	7.35	0.00
3 Months Ago 04-28-2016	90.49	4.12	5.39	0.00	0.00	0.00
Start of Calendar Year 12-31-2015	100.00	0.00	0.00	0.00	0.00	0.00
Start of Water Year 10-01-2015	76.12	18.41	5.47	0.00	0.00	0.00
One Year Ago 07-30-2015	56.78	41.62	1.60	0.00	0.00	0.00

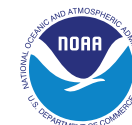
Intensity:

None	D2 Severe Drought
D0 Abnormally Dry	D3 Extreme Drought
D1 Moderate Drought	D4 Exceptional Drought

The Drought Monitor focuses on broad-scale conditions. Local conditions may vary. For more information on the Drought Monitor, go to <https://droughtmonitor.unl.edu/About.aspx>

Author:

Brad Rippey
U.S. Department of Agriculture



droughtmonitor.unl.edu