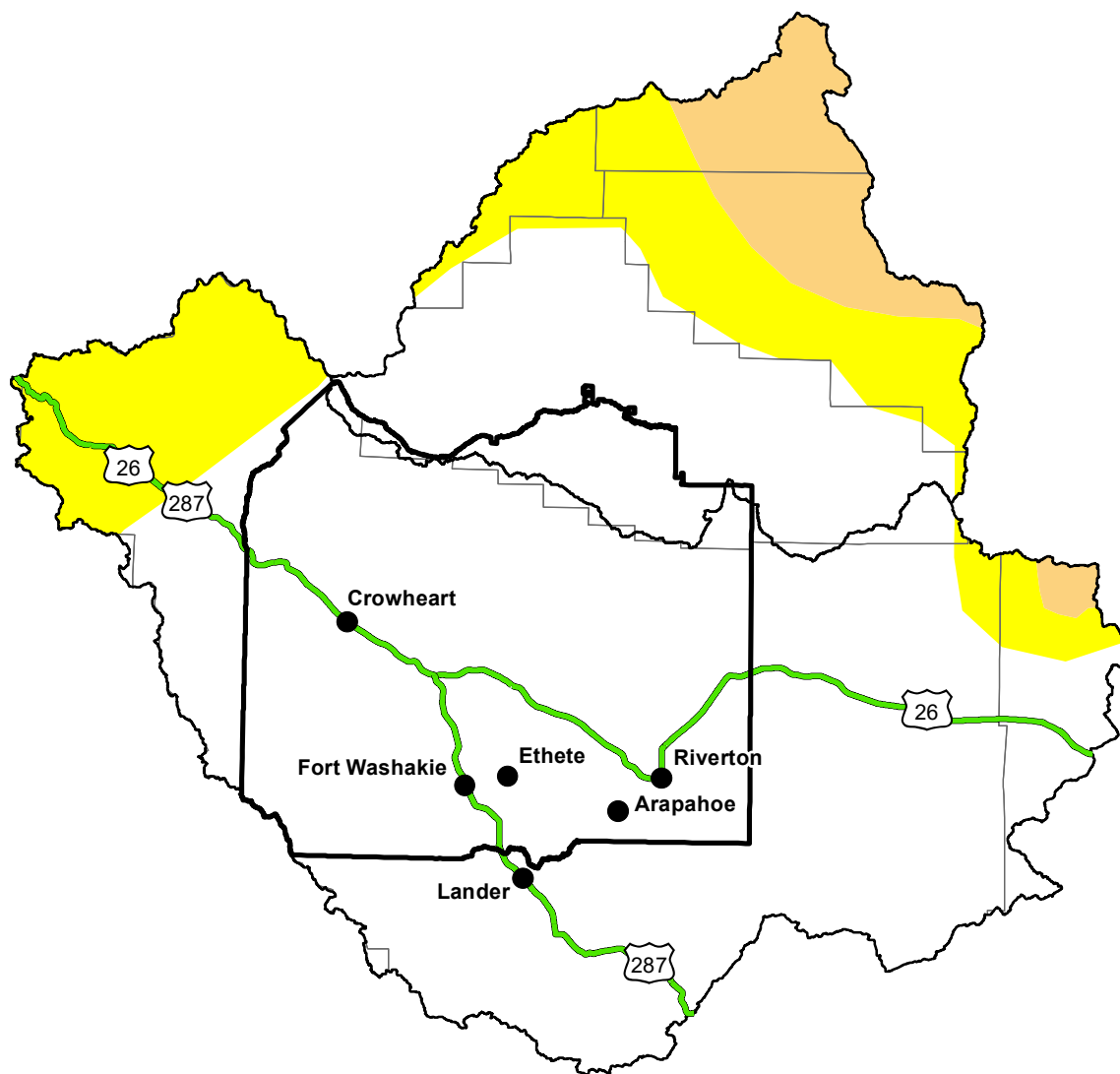


# U.S. Drought Monitor

## Wind River and Surrounding Area

**August 16, 2016**  
 (Released Thursday, Aug. 18, 2016)  
 Valid 8 a.m. EDT



*Drought Conditions (Percent Area)*

	None	D0-D4	D1-D4	D2-D4	D3-D4	D4
<b>Current</b>	0.00	0.00	0.00	0.00	0.00	0.00
<b>Last Week</b> 08-11-2016	0.00	0.00	0.00	0.00	0.00	0.00
<b>3 Months Ago</b> 05-19-2016	0.00	0.00	0.00	0.00	0.00	0.00
<b>Start of Calendar Year</b> 12-31-2015	0.00	0.00	0.00	0.00	0.00	0.00
<b>Start of Water Year</b> 10-01-2015	0.00	0.00	0.00	0.00	0.00	0.00
<b>One Year Ago</b> 08-20-2015	0.00	0.00	0.00	0.00	0.00	0.00

*Note: Statistics are for the surrounding area including the reservation.*

### Intensity:

None	D2 Severe Drought
D0 Abnormally Dry	D3 Extreme Drought
D1 Moderate Drought	D4 Exceptional Drought

*The Drought Monitor focuses on broad-scale conditions. Local conditions may vary. For more information on the Drought Monitor, go to <https://droughtmonitor.unl.edu/About.aspx>*

### Author:

David Miskus  
 NOAA/NWS/NCEP/CPC



<http://droughtmonitor.unl.edu/>