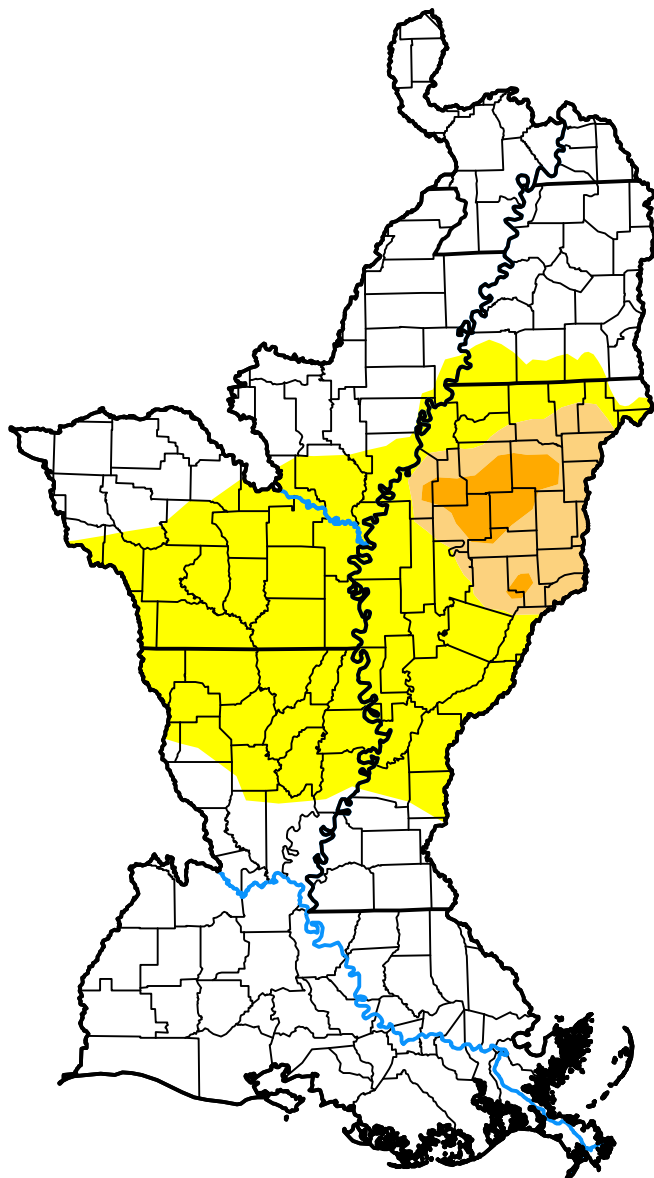


U.S. Drought Monitor

Lower Mississippi Watershed

September 27, 2016
(Released Thursday, Sep. 29, 2016)
Valid 8 a.m. EDT



Intensity:



The Drought Monitor focuses on broad-scale conditions. Local conditions may vary. For more information on the Drought Monitor, go to <https://droughtmonitor.unl.edu/About.aspx>

Author:

Chris Fenimore
NCEI/NESDIS/NOAA



droughtmonitor.unl.edu