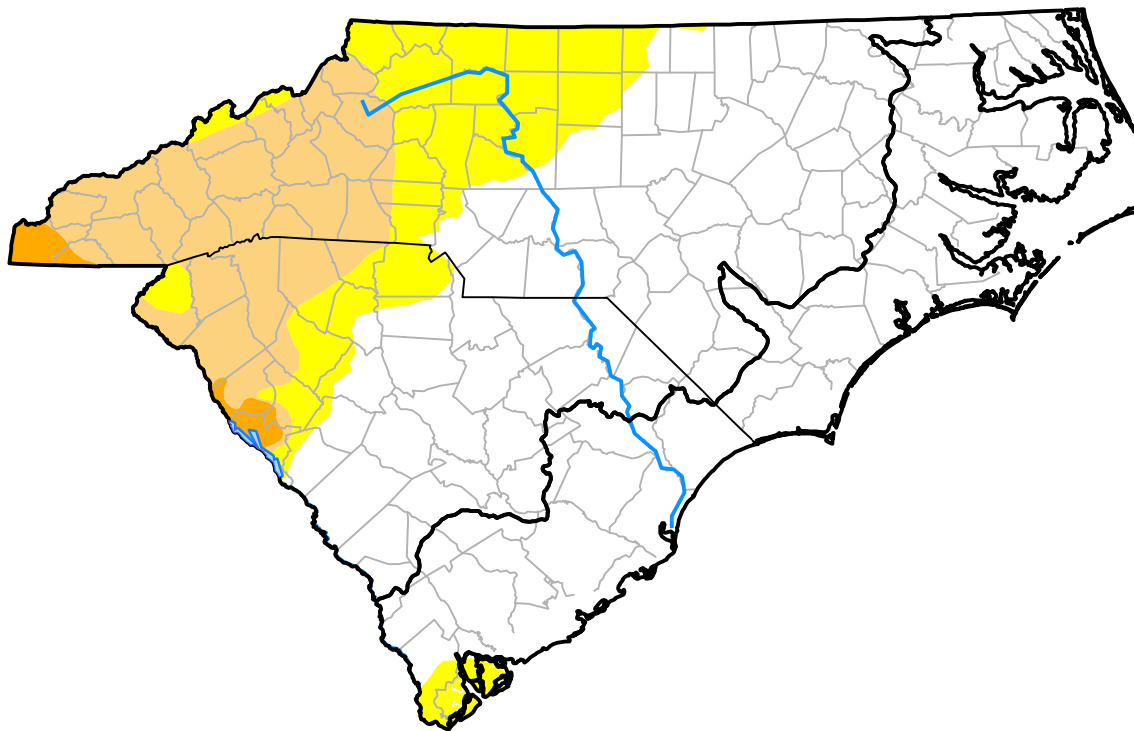


Carolinas RDEWS and Surrounding Areas

Drought Conditions (Percent Area)

	None	D0-D4	D1-D4	D2-D4	D3-D4	D4
Current	69.04	30.96	16.27	1.13	0.00	0.00
Last Week <i>09-22-2016</i>	59.15	40.85	12.54	1.13	0.00	0.00
3 Months Ago <i>06-30-2016</i>	71.91	28.09	11.50	2.80	0.00	0.00
Start of Calendar Year <i>12-31-2015</i>	99.87	0.13	0.00	0.00	0.00	0.00
Start of Water Year <i>10-01-2015</i>	32.21	67.79	23.09	5.37	0.00	0.00
One Year Ago <i>10-01-2015</i>	32.21	67.79	23.09	5.37	0.00	0.00



Intensity:

- None
- D0 Abnormally Dry
- D1 Moderate Drought
- D2 Severe Drought
- D3 Extreme Drought
- D4 Exceptional Drought

The Drought Monitor focuses on broad-scale conditions. Local conditions may vary. For more information on the Drought Monitor, go to <https://droughtmonitor.unl.edu/About.aspx>

Author:

Chris Fenimore
NCEI/NESDIS/NOAA

