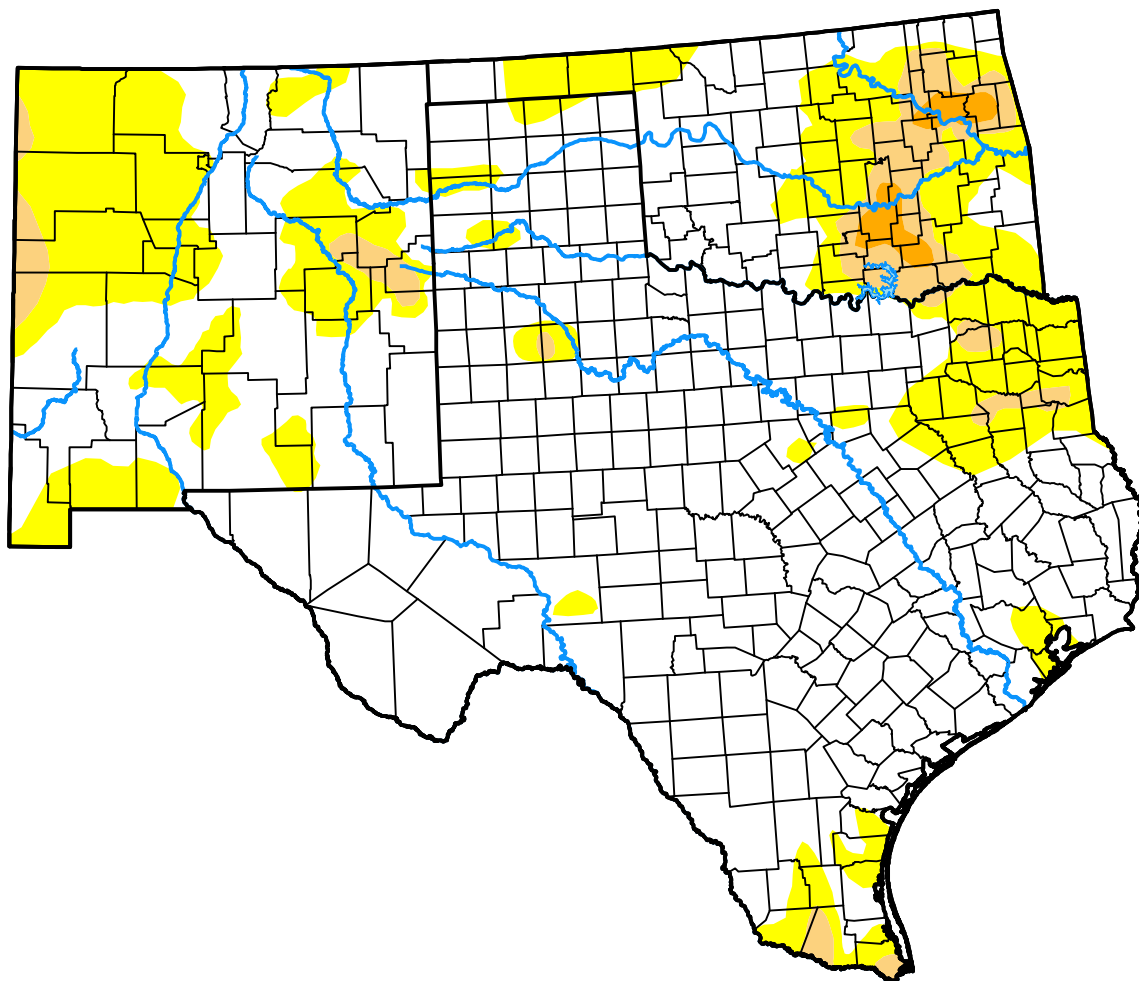


U.S. Drought Monitor

Southern Plains RDEWS

October 4, 2016
 (Released Thursday, Oct. 6, 2016)
 Valid 8 a.m. EDT



Drought Conditions (Percent Area)

	None	D0	D1	D2	D3	D4
Current	72.92	22.16	4.14	0.79	0.00	0.00
Last Week <i>09-27-2016</i>	78.11	17.59	3.83	0.47	0.00	0.00
3 Months Ago <i>07-05-2016</i>	74.79	20.37	4.84	0.00	0.00	0.00
Start of Calendar Year <i>12-29-2015</i>	90.39	9.61	0.00	0.00	0.00	0.00
Start of Water Year <i>09-27-2016</i>	78.11	17.59	3.83	0.47	0.00	0.00
One Year Ago <i>10-06-2015</i>	40.12	26.14	18.04	9.57	6.13	0.00

Intensity:

None	D2 Severe Drought
D0 Abnormally Dry	D3 Extreme Drought
D1 Moderate Drought	D4 Exceptional Drought

The Drought Monitor focuses on broad-scale conditions. Local conditions may vary. For more information on the Drought Monitor, go to <https://droughtmonitor.unl.edu/About.aspx>

Author:

Brian Fuchs
 National Drought Mitigation Center



droughtmonitor.unl.edu