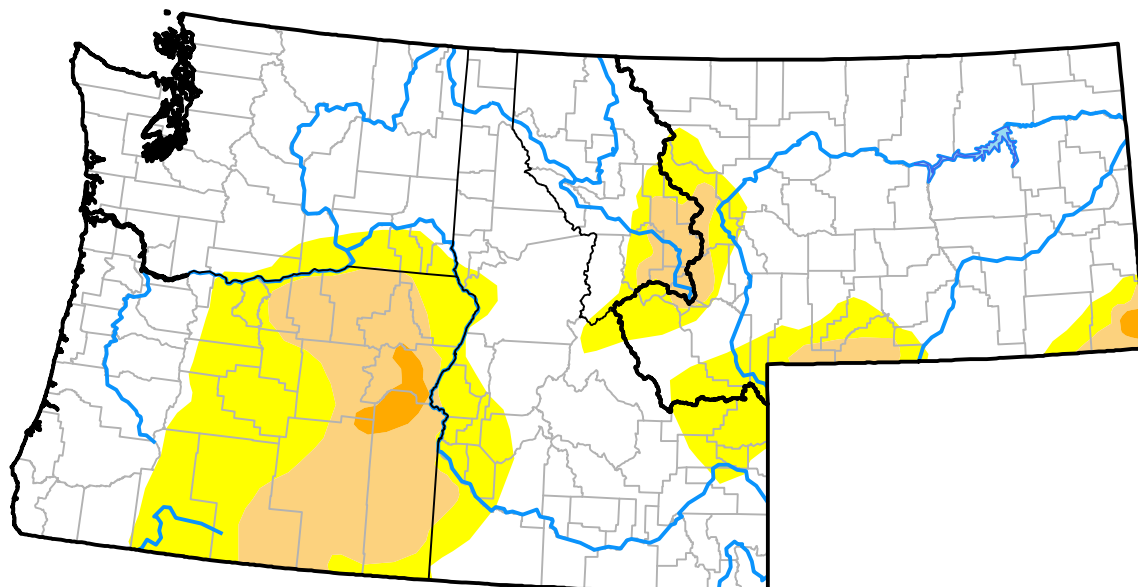


Northwest RDEWS and Surrounding Areas

Drought Conditions (Percent Area)

	None	D0-D4	D1-D4	D2-D4	D3-D4	D4
Current	71.06	28.94	11.27	0.77	0.00	0.00
Last Week 10-13-2016	39.99	60.01	16.86	3.14	0.00	0.00
3 Months Ago 07-21-2016	30.95	69.05	18.38	0.42	0.17	0.00
Start of Calendar Year 12-31-2015	34.29	65.71	49.19	29.44	11.27	0.00
Start of Water Year 09-29-2016	21.83	78.17	25.39	5.20	0.12	0.00
One Year Ago 10-22-2015	18.60	81.40	71.94	60.07	40.44	0.00



Intensity:

None	D2 Severe Drought
D0 Abnormally Dry	D3 Extreme Drought
D1 Moderate Drought	D4 Exceptional Drought

The Drought Monitor focuses on broad-scale conditions. Local conditions may vary. For more information on the Drought Monitor, go to <https://droughtmonitor.unl.edu/About.aspx>

Author:

Eric Luebehusen
U.S. Department of Agriculture

