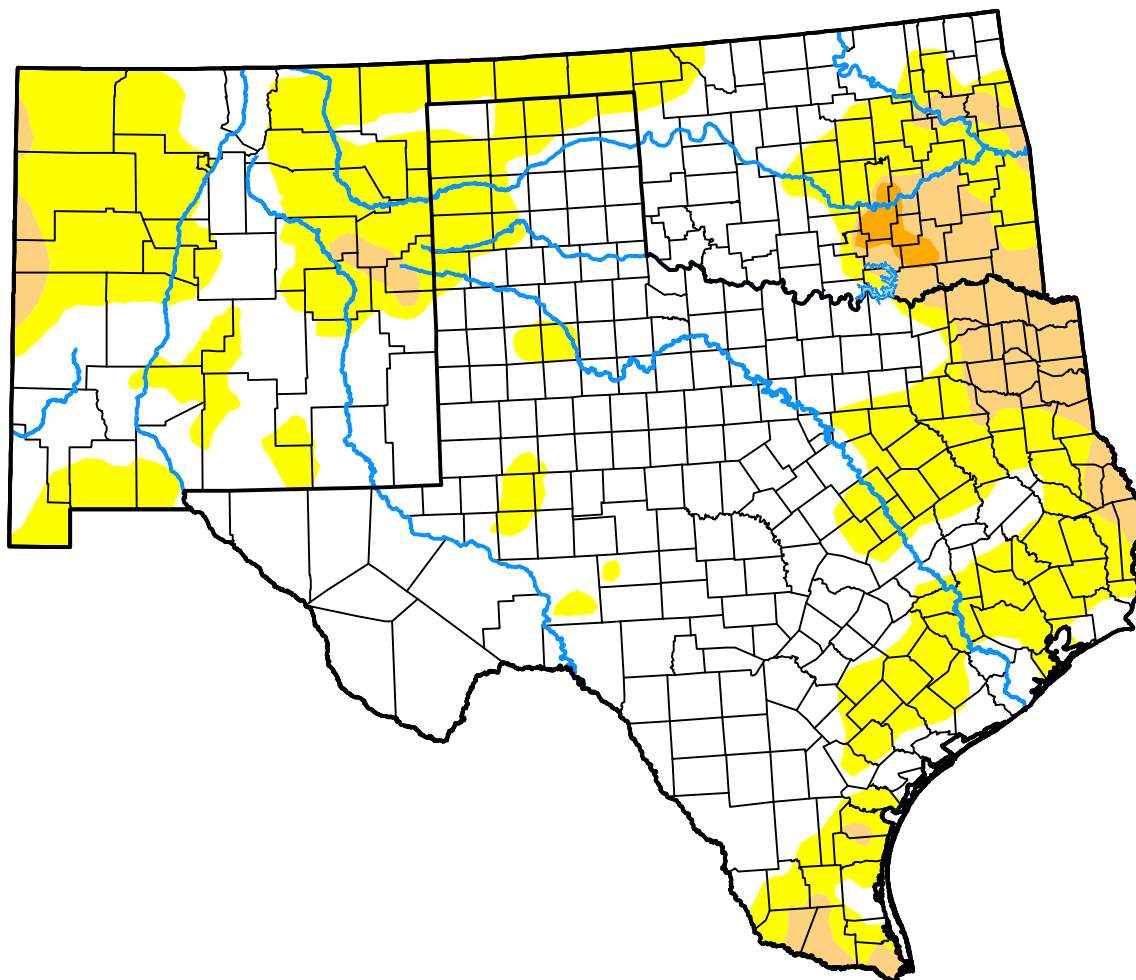


U.S. Drought Monitor

Southern Plains RDEWS

October 18, 2016
(Released Thursday, Oct. 20, 2016)
 Valid 8 a.m. EDT



Drought Conditions (Percent Area)

	None	D0	D1	D2	D3	D4
Current	60.60	32.12	6.79	0.49	0.00	0.00
Last Week <i>10-11-2016</i>	69.51	25.02	5.01	0.45	0.00	0.00
3 Months Ago <i>07-19-2016</i>	66.60	27.12	6.28	0.00	0.00	0.00
Start of Calendar Year <i>12-29-2015</i>	90.39	9.61	0.00	0.00	0.00	0.00
Start of Water Year <i>09-27-2016</i>	78.11	17.59	3.83	0.47	0.00	0.00
One Year Ago <i>10-20-2015</i>	42.49	20.66	9.71	14.02	9.92	3.21

Intensity:

None	D2 Severe Drought
D0 Abnormally Dry	D3 Extreme Drought
D1 Moderate Drought	D4 Exceptional Drought

The Drought Monitor focuses on broad-scale conditions. Local conditions may vary. For more information on the Drought Monitor, go to <https://droughtmonitor.unl.edu/About.aspx>

Author:

Eric Luebehusen
 U.S. Department of Agriculture



droughtmonitor.unl.edu