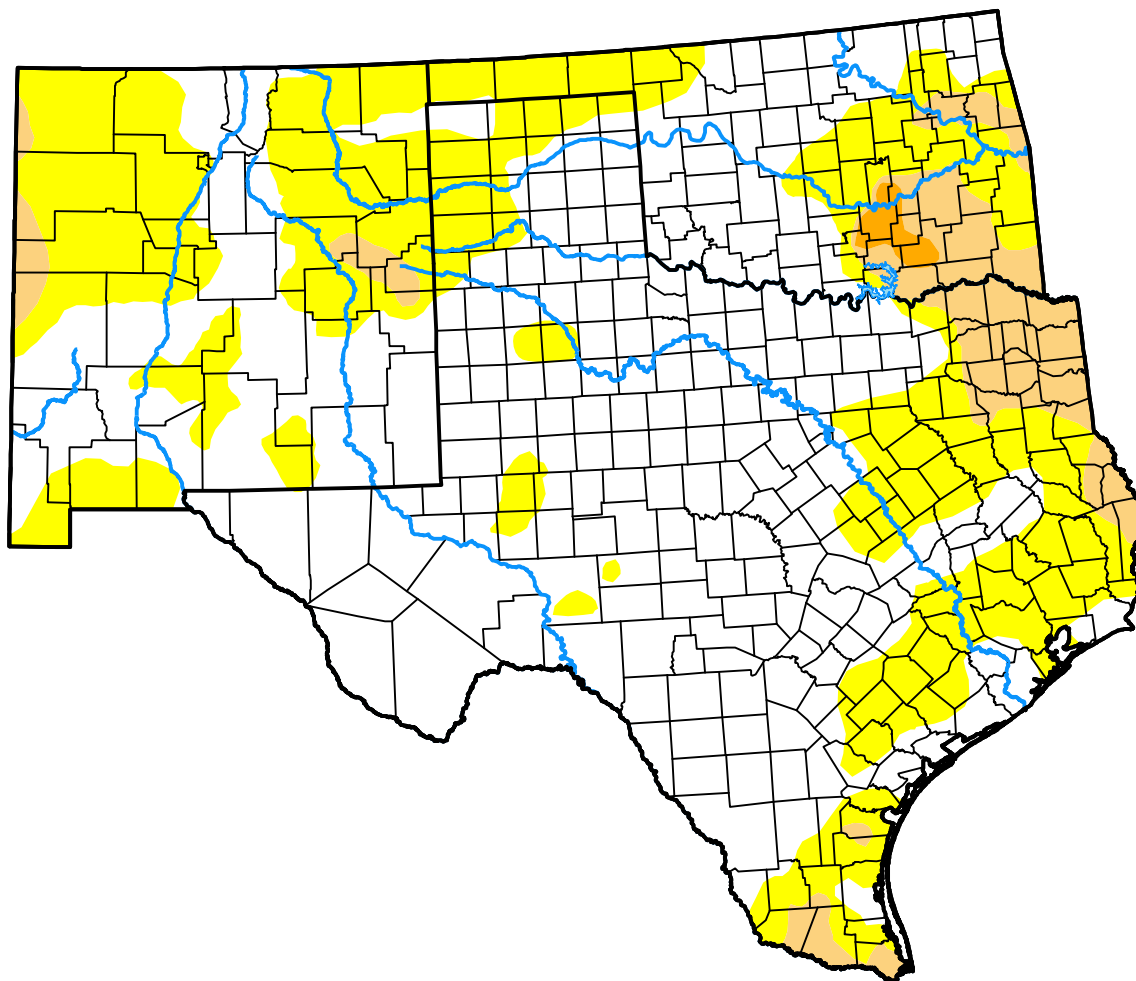


# U.S. Drought Monitor

## Southern Plains RDEWS

**October 18, 2016**  
 (Released Thursday, Oct. 20, 2016)  
 Valid 8 a.m. EDT



*Drought Conditions (Percent Area)*

|  | None  | D0-D4 | D1-D4 | D2-D4 | D3-D4 | D4   |
|--|-------|-------|-------|-------|-------|------|
| <b>Current</b>                                     | 60.60 | 39.40 | 7.28  | 0.49  | 0.00  | 0.00 |
| <b>Last Week</b><br><i>10-11-2016</i>              | 69.51 | 30.49 | 5.47  | 0.45  | 0.00  | 0.00 |
| <b>3 Months Ago</b><br><i>07-19-2016</i>           | 66.60 | 33.40 | 6.28  | 0.00  | 0.00  | 0.00 |
| <b>Start of Calendar Year</b><br><i>12-29-2015</i> | 90.39 | 9.61  | 0.00  | 0.00  | 0.00  | 0.00 |
| <b>Start of Water Year</b><br><i>09-27-2016</i>    | 78.11 | 21.89 | 4.30  | 0.47  | 0.00  | 0.00 |
| <b>One Year Ago</b><br><i>10-20-2015</i>           | 42.49 | 57.51 | 36.85 | 27.14 | 13.13 | 3.21 |

### Intensity:

|                     |                        |
|---------------------|------------------------|
| None                | D2 Severe Drought      |
| D0 Abnormally Dry   | D3 Extreme Drought     |
| D1 Moderate Drought | D4 Exceptional Drought |

*The Drought Monitor focuses on broad-scale conditions. Local conditions may vary. For more information on the Drought Monitor, go to <https://droughtmonitor.unl.edu/About.aspx>*

### Author:

Eric Luebehusen  
 U.S. Department of Agriculture



**droughtmonitor.unl.edu**