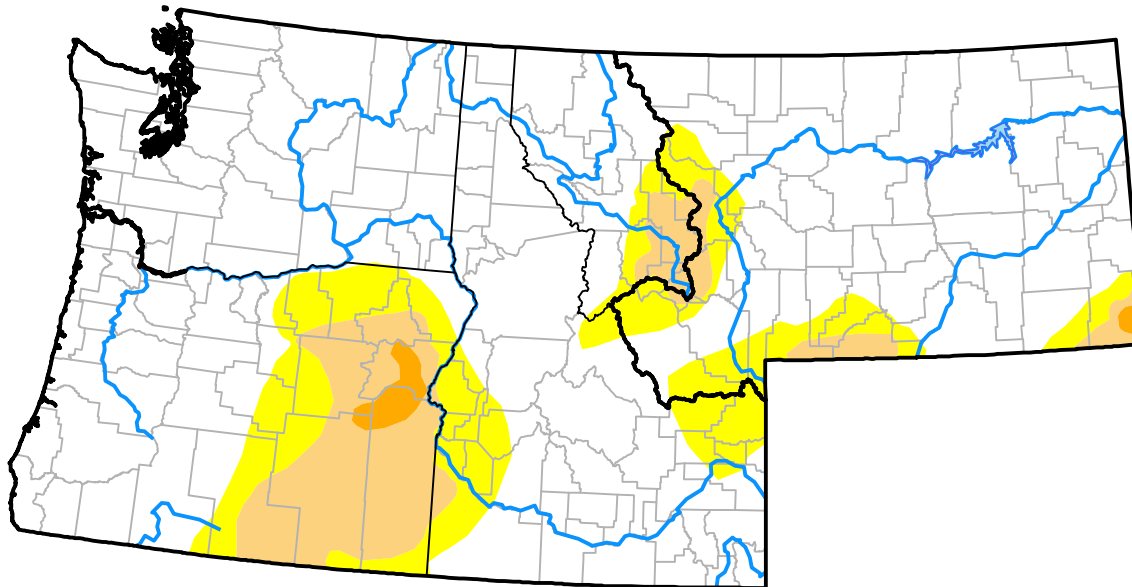


Northwest RDEWS and Surrounding Areas

Drought Conditions (Percent Area)

| | None | D0-D4 | D1-D4 | D2-D4 | D3-D4 | D4 |
|--|-------|-------|-------|-------|-------|------|
| Current | 77.61 | 22.39 | 9.68 | 0.77 | 0.00 | 0.00 |
| Last Week <i>10-20-2016</i> | 71.06 | 28.94 | 11.27 | 0.77 | 0.00 | 0.00 |
| 3 Months Ago <i>07-28-2016</i> | 30.73 | 69.27 | 18.38 | 0.42 | 0.17 | 0.00 |
| Start of Calendar Year <i>12-31-2015</i> | 34.29 | 65.71 | 49.19 | 29.44 | 11.27 | 0.00 |
| Start of Water Year <i>09-29-2016</i> | 21.83 | 78.17 | 25.39 | 5.20 | 0.12 | 0.00 |
| One Year Ago <i>10-29-2015</i> | 18.60 | 81.40 | 71.94 | 60.07 | 40.44 | 0.00 |



Intensity:

- None
- D0 Abnormally Dry
- D1 Moderate Drought
- D2 Severe Drought
- D3 Extreme Drought
- D4 Exceptional Drought

The Drought Monitor focuses on broad-scale conditions. Local conditions may vary. For more information on the Drought Monitor, go to <https://droughtmonitor.unl.edu/About.aspx>

Author:

David Simeral
Western Regional Climate Center

