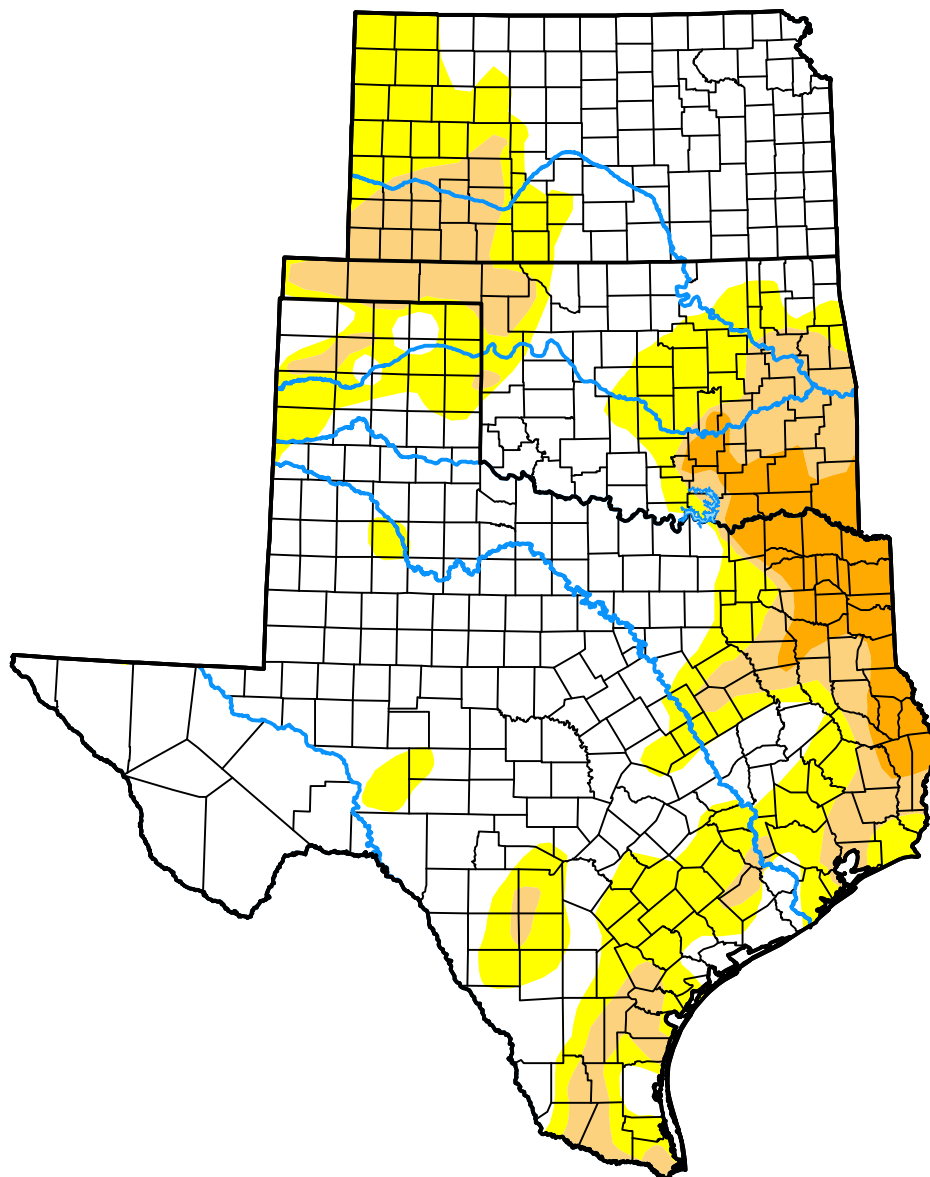


*U.S. Drought Monitor*  
**USDA Southern Plains  
Climate Hub**

**November 8, 2016**  
(Released Thursday, Nov. 10, 2016)  
Valid 7 a.m. EST



**Intensity:**



*The Drought Monitor focuses on broad-scale conditions. Local conditions may vary. For more information on the Drought Monitor, go to <https://droughtmonitor.unl.edu/About.aspx>*

**Author:**

Deborah Bathke  
National Drought Mitigation Center



**droughtmonitor.unl.edu**