

U.S. Drought Monitor

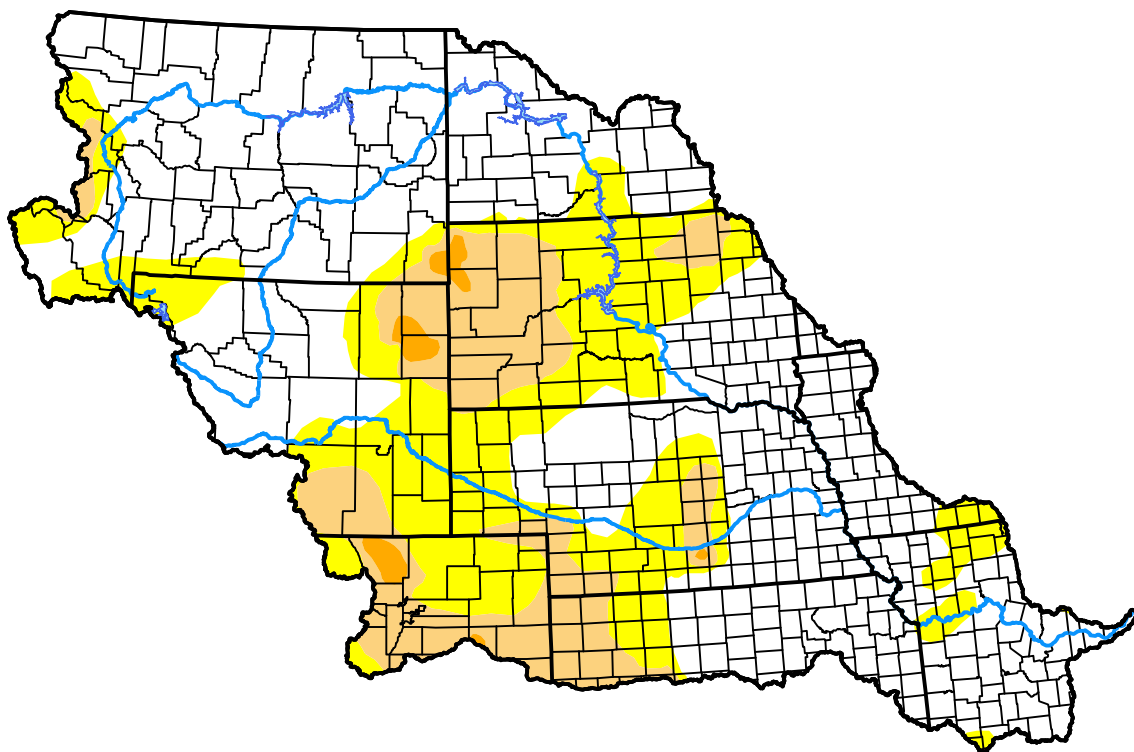
Missouri Watershed

November 15, 2016
 (Released Thursday, Nov. 17, 2016)

Valid 7 a.m. EST

Drought Conditions (Percent Area)

	None	D0-D4	D1-D4	D2-D4	D3-D4	D4
Current	60.74	39.26	14.64	0.99	0.00	0.00
Last Week <i>11-10-2016</i>	64.11	35.89	10.34	0.65	0.00	0.00
3 Months Ago <i>08-18-2016</i>	55.07	44.93	16.17	5.69	1.33	0.00
Start of Calendar Year <i>12-31-2015</i>	76.59	23.41	5.40	1.14	0.00	0.00
Start of Water Year <i>09-29-2016</i>	68.17	31.83	12.24	3.65	0.26	0.00
One Year Ago <i>11-19-2015</i>	59.16	40.84	7.16	2.45	0.00	0.00



Intensity:



The Drought Monitor focuses on broad-scale conditions. Local conditions may vary. For more information on the Drought Monitor, go to <https://droughtmonitor.unl.edu/About.aspx>

Author:

Richard Heim
 NCEI/NOAA



droughtmonitor.unl.edu