

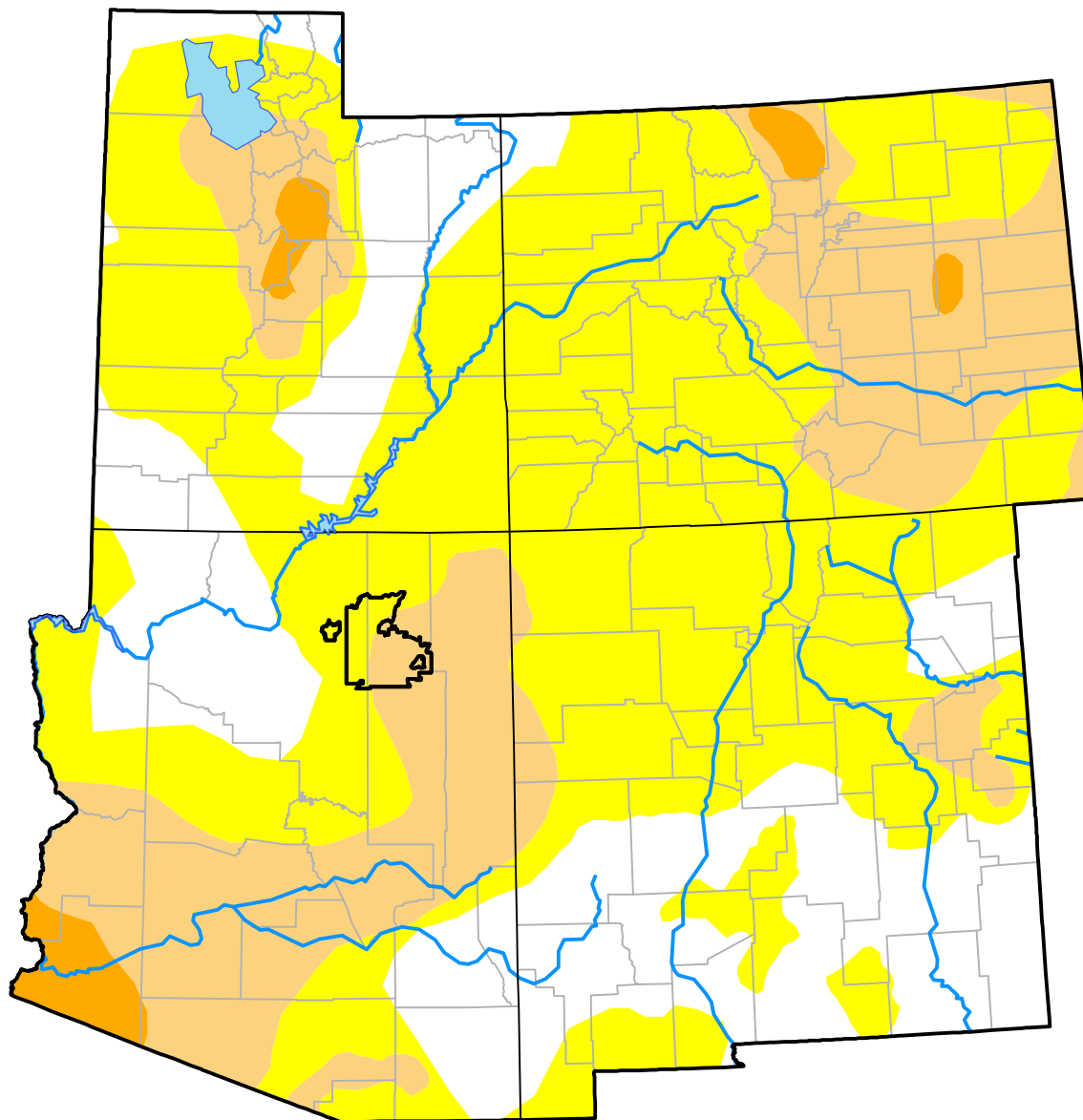
U.S. Drought Monitor Hopi RDEWS

November 15, 2016
(Released Thursday, Nov. 17, 2016)

Valid 7 a.m. EST

Drought Conditions (Percent Area)

	None	D0-D4	D1-D4	D2-D4	D3-D4	D4
Current	0.00	100.00	49.68	0.00	0.00	0.00
Last Week <i>11-10-2016</i>	0.00	100.00	49.68	0.00	0.00	0.00
3 Months Ago <i>08-18-2016</i>	0.00	100.00	93.90	0.00	0.00	0.00
Start of Calendar Year <i>12-31-2015</i>	0.00	100.00	0.00	0.00	0.00	0.00
Start of Water Year <i>09-29-2016</i>	0.00	100.00	49.68	0.00	0.00	0.00
One Year Ago <i>11-19-2015</i>	0.00	100.00	96.99	0.00	0.00	0.00



Intensity:

- None
- D0 Abnormally Dry
- D1 Moderate Drought
- D2 Severe Drought
- D3 Extreme Drought
- D4 Exceptional Drought

The Drought Monitor focuses on broad-scale conditions. Local conditions may vary. For more information on the Drought Monitor, go to <https://droughtmonitor.unl.edu/About.aspx>

Author:

Richard Heim
NCEI/NOAA



droughtmonitor.unl.edu