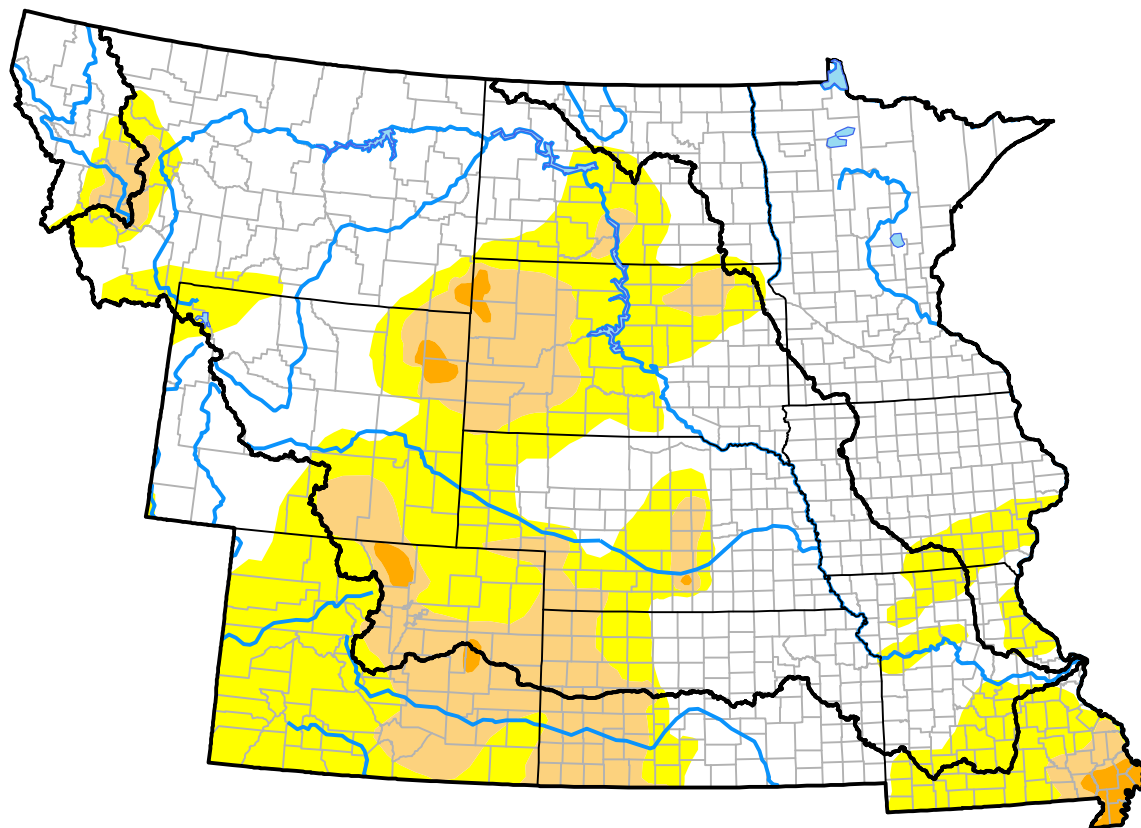


U.S. Drought Monitor

Missouri River Basin RDEWS

November 22, 2016
 (Released Wednesday, Nov. 23, 2016)
 Valid 7 a.m. EST



Drought Conditions (Percent Area)

	None	D0	D1	D2	D3	D4
Current	56.46	28.54	14.02	0.99	0.00	0.00
Last Week <i>11-17-2016</i>	60.79	24.59	13.63	0.99	0.00	0.00
3 Months Ago <i>08-25-2016</i>	56.93	27.43	10.50	4.32	0.82	0.00
Start of Calendar Year <i>12-31-2015</i>	76.46	18.00	4.26	1.28	0.00	0.00
Start of Water Year <i>09-29-2016</i>	68.23	19.54	8.58	3.39	0.26	0.00
One Year Ago <i>11-25-2015</i>	65.88	27.35	4.19	2.59	0.00	0.00

Intensity:



The Drought Monitor focuses on broad-scale conditions. Local conditions may vary. For more information on the Drought Monitor, go to <https://droughtmonitor.unl.edu/About.aspx>

Author:

Richard Heim
 NCEI/NOAA

