

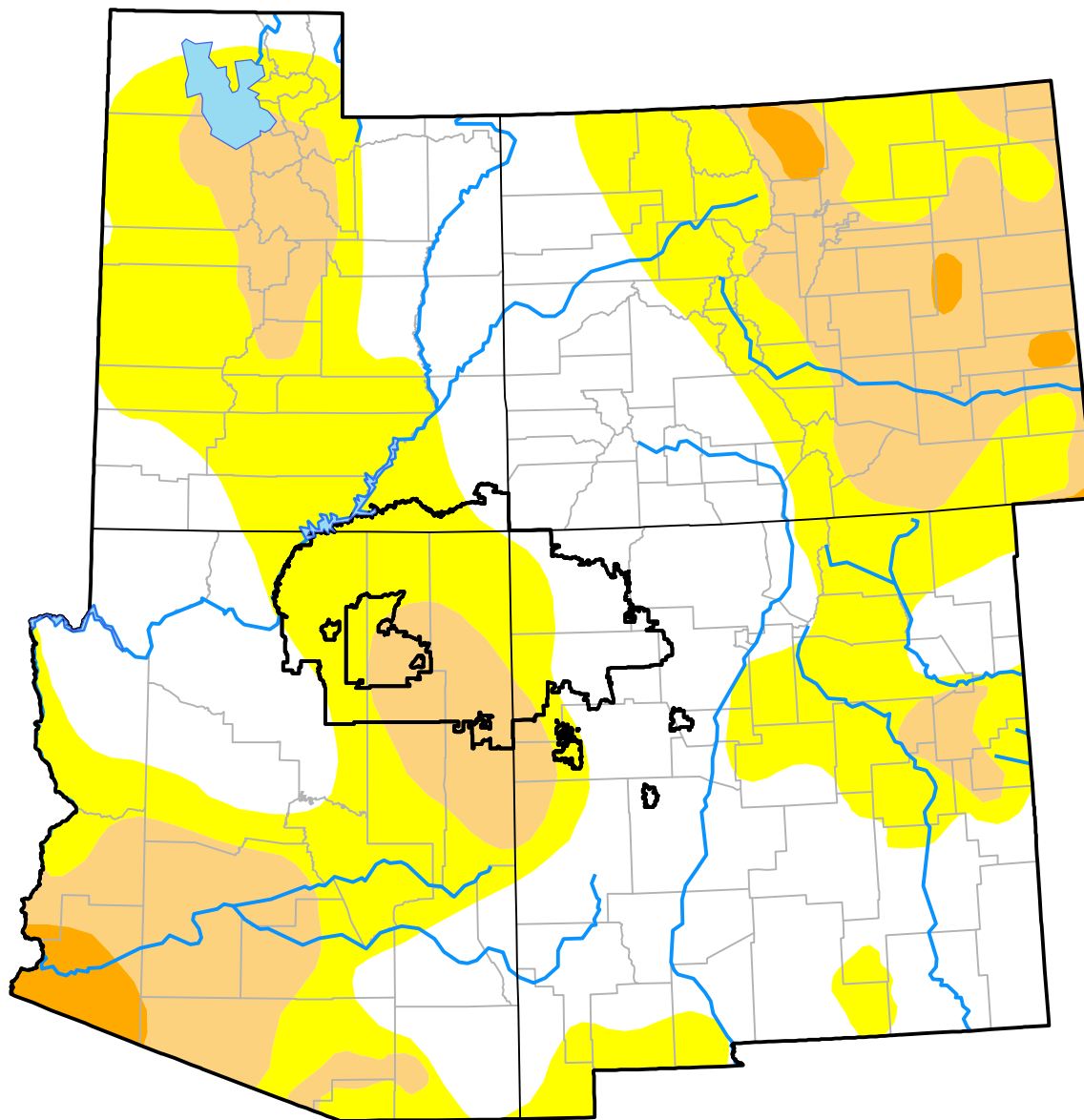
Nebraska RDEWS and Surrounding Areas

(Released Thursday, Dec. 29, 2016)

Valid 7 a.m. EST

Drought Conditions (Percent Area)

	None	D0-D4	D1-D4	D2-D4	D3-D4	D4
Current	42.30	57.70	21.87	1.69	0.00	0.00
Last Week <i>12-22-2016</i>	24.49	75.51	25.70	2.26	0.00	0.00
3 Months Ago <i>09-29-2016</i>	42.64	57.36	16.56	1.61	0.00	0.00
Start of Calendar Year <i>12-31-2015</i>	51.56	48.44	18.69	4.81	0.00	0.00
Start of Water Year <i>09-29-2016</i>	42.64	57.36	16.56	1.61	0.00	0.00
One Year Ago <i>12-31-2015</i>	51.56	48.44	18.69	4.81	0.00	0.00



Intensity:

- None
- D0 Abnormally Dry
- D1 Moderate Drought
- D2 Severe Drought
- D3 Extreme Drought
- D4 Exceptional Drought

The Drought Monitor focuses on broad-scale conditions. Local conditions may vary. For more information on the Drought Monitor, go to <https://droughtmonitor.unl.edu/About.aspx>

Author:

Brad Rippey
U.S. Department of Agriculture

