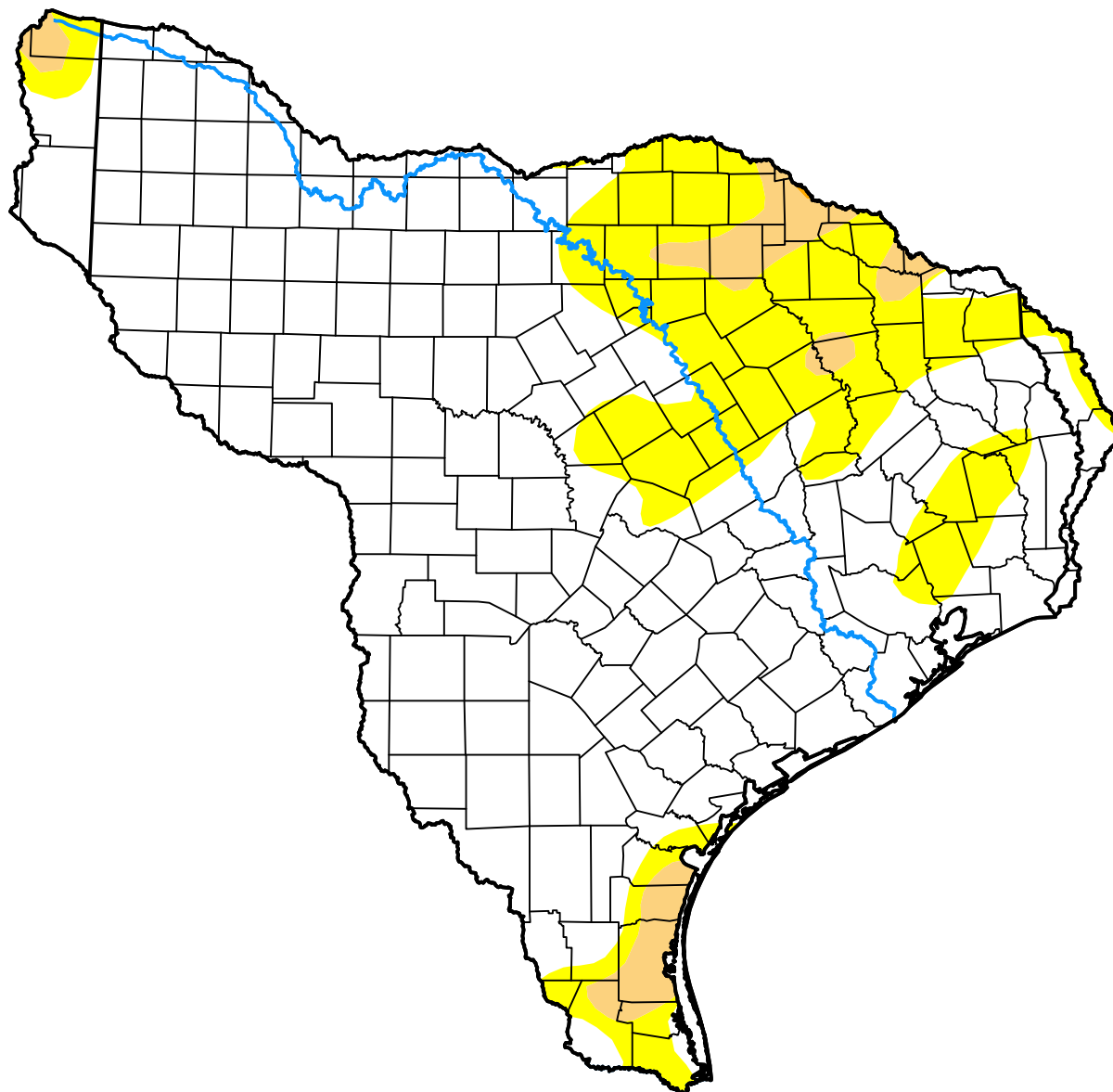


# U.S. Drought Monitor Texas-Gulf Watershed

January 10, 2017  
(Released Thursday, Jan. 12, 2017)  
Valid 7 a.m. EST



## Intensity:



*The Drought Monitor focuses on broad-scale conditions. Local conditions may vary. For more information on the Drought Monitor, go to <https://droughtmonitor.unl.edu/About.aspx>*

## Author:

David Miskus  
NOAA/NWS/NCEP/CPC



[droughtmonitor.unl.edu](https://droughtmonitor.unl.edu)