

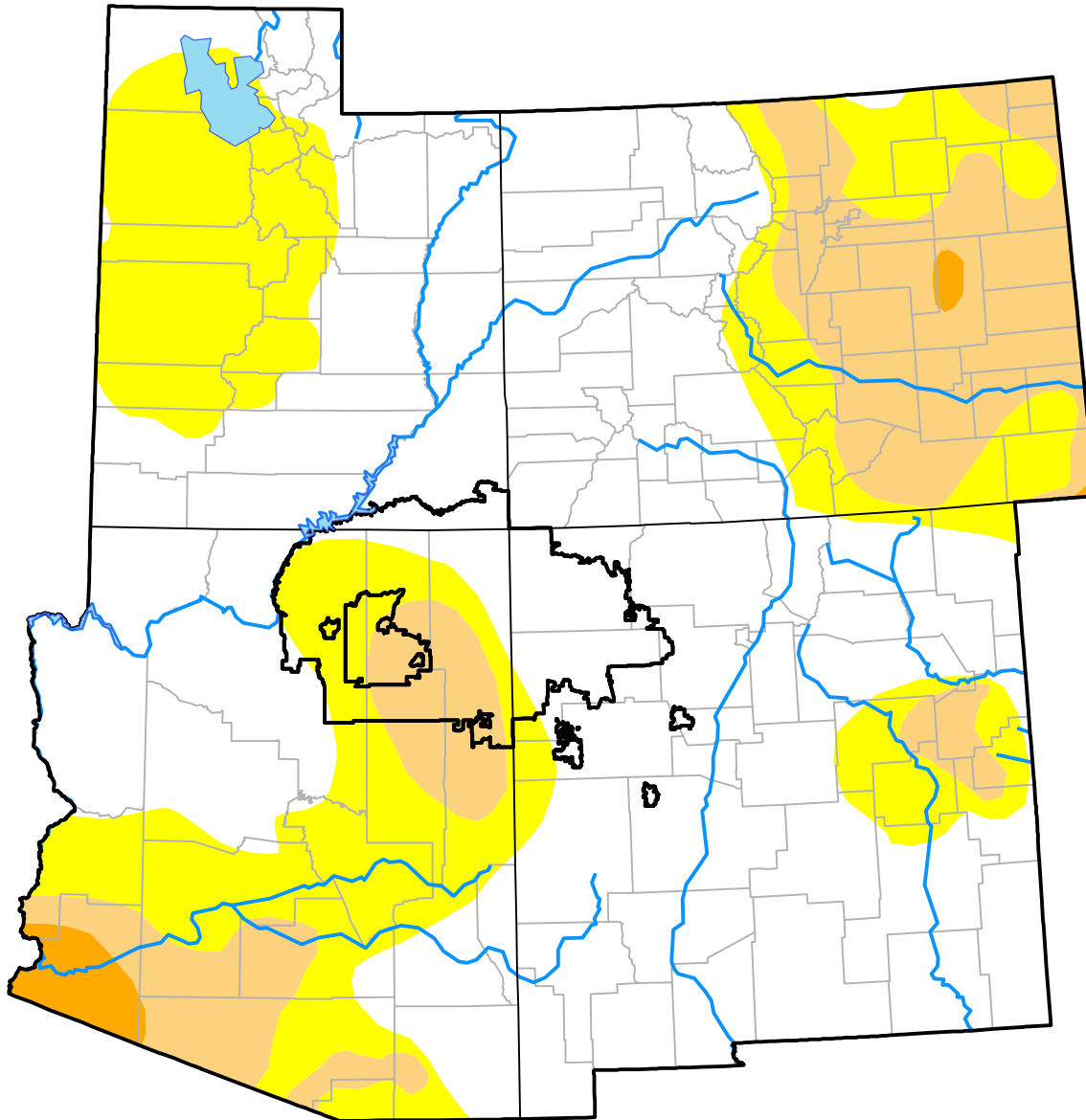
Nebraska RDEWS and Surrounding Areas

(Released Thursday, Jan. 26, 2017)

Valid 7 a.m. EST

Drought Conditions (Percent Area)

	None	D0	D1	D2	D3	D4
Current	59.44	24.89	14.51	1.16	0.00	0.00
Last Week <i>01-19-2017</i>	51.32	32.14	15.38	1.16	0.00	0.00
3 Months Ago <i>10-27-2016</i>	37.15	45.45	15.79	1.61	0.00	0.00
Start of Calendar Year <i>01-05-2017</i>	46.78	33.57	17.96	1.69	0.00	0.00
Start of Water Year <i>09-29-2016</i>	42.64	40.80	14.95	1.61	0.00	0.00
One Year Ago <i>01-28-2016</i>	67.04	22.70	7.72	2.54	0.00	0.00



Intensity:

- None
- D0 Abnormally Dry
- D1 Moderate Drought
- D2 Severe Drought
- D3 Extreme Drought
- D4 Exceptional Drought

The Drought Monitor focuses on broad-scale conditions. Local conditions may vary. For more information on the Drought Monitor, go to <https://droughtmonitor.unl.edu/About.aspx>

Author:

Richard Tinker
CPC/NOAA/NWS/NCEP

