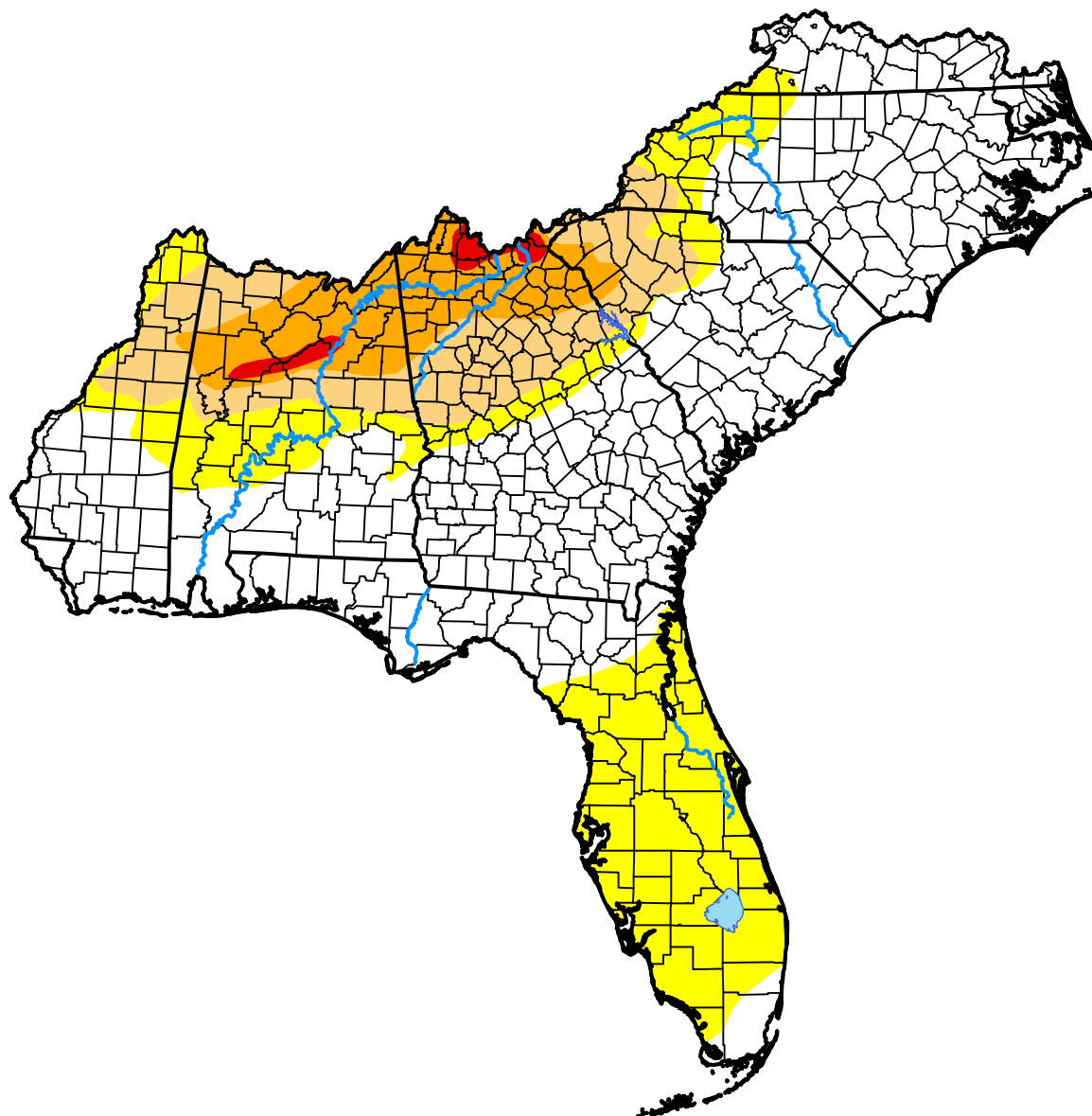


# South Atlantic-Gulf Watershed

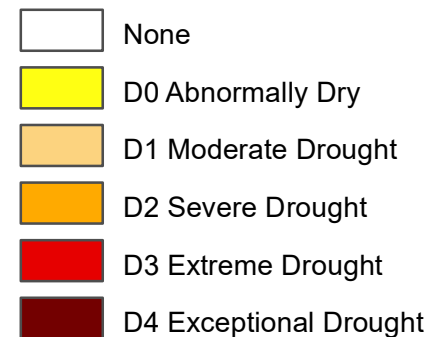
**January 31, 2017**

*(Released Thursday, Feb. 2, 2017)*

Valid 7 a.m. EST



**Intensity:**



*The Drought Monitor focuses on broad-scale conditions. Local conditions may vary. For more information on the Drought Monitor, go to <https://droughtmonitor.unl.edu/About.aspx>*

**Author:**

David Simeral  
Western Regional Climate Center



**droughtmonitor.unl.edu**