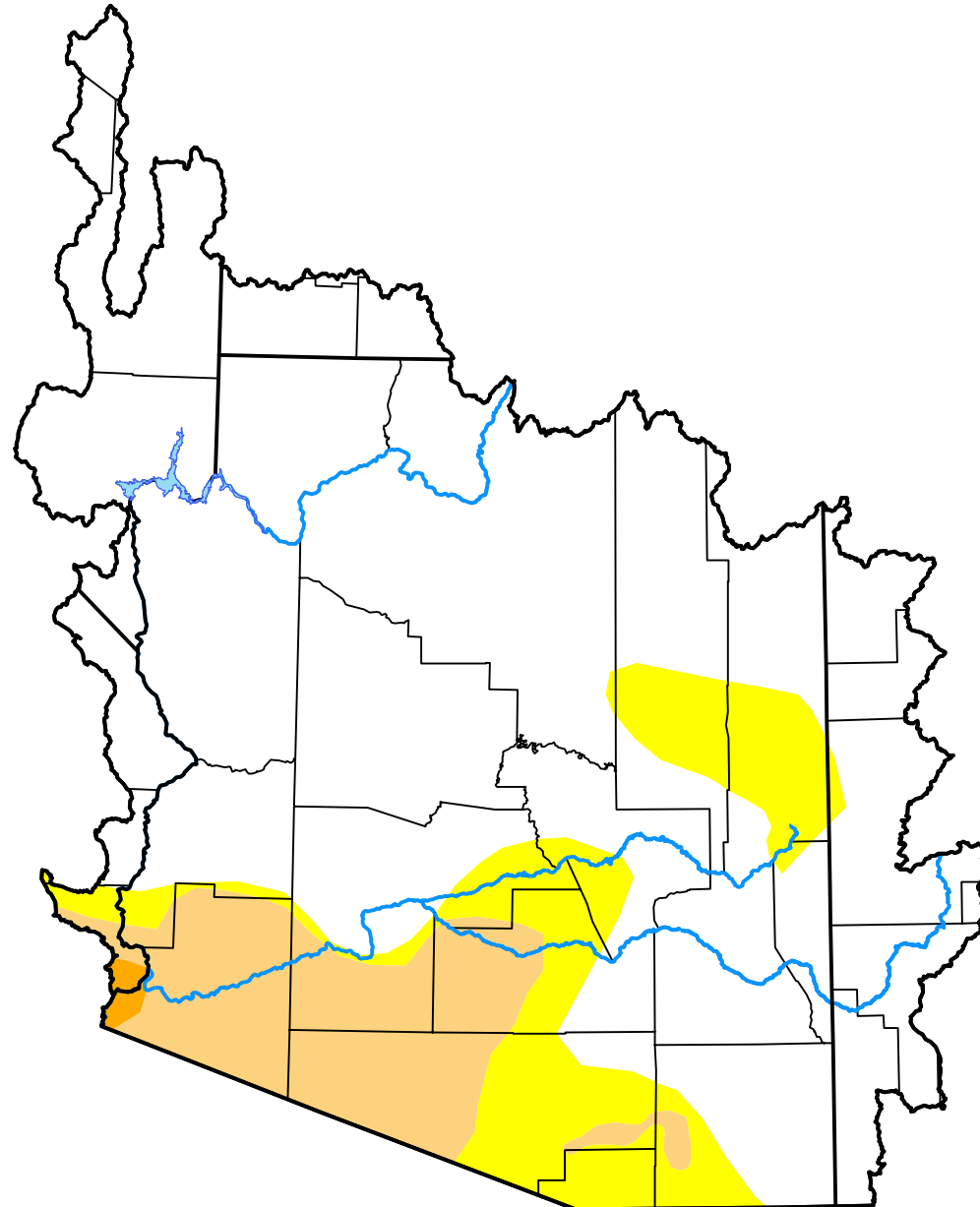


U.S. Drought Monitor

Lower Colorado Watershed

March 14, 2017
 (Released Thursday, Mar. 16, 2017)
 Valid 8 a.m. EDT



Drought Conditions (Percent Area)

	None	D0-D4	D1-D4	D2-D4	D3-D4	D4
Current	76.31	23.69	11.38	0.33	0.00	0.00
Last Week <i>03-09-2017</i>	76.31	23.69	11.38	0.33	0.00	0.00
3 Months Ago <i>12-15-2016</i>	27.82	72.18	37.84	4.38	0.00	0.00
Start of Calendar Year <i>01-05-2017</i>	45.82	54.18	21.86	3.25	0.00	0.00
Start of Water Year <i>09-29-2016</i>	11.79	88.21	37.84	4.38	0.00	0.00
One Year Ago <i>03-17-2016</i>	0.46	99.54	27.87	0.61	0.00	0.00

Intensity:

- None
- D0 Abnormally Dry
- D1 Moderate Drought
- D2 Severe Drought
- D3 Extreme Drought
- D4 Exceptional Drought

The Drought Monitor focuses on broad-scale conditions. Local conditions may vary. For more information on the Drought Monitor, go to <https://droughtmonitor.unl.edu/About.aspx>

Author:

Brian Fuchs
 National Drought Mitigation Center

