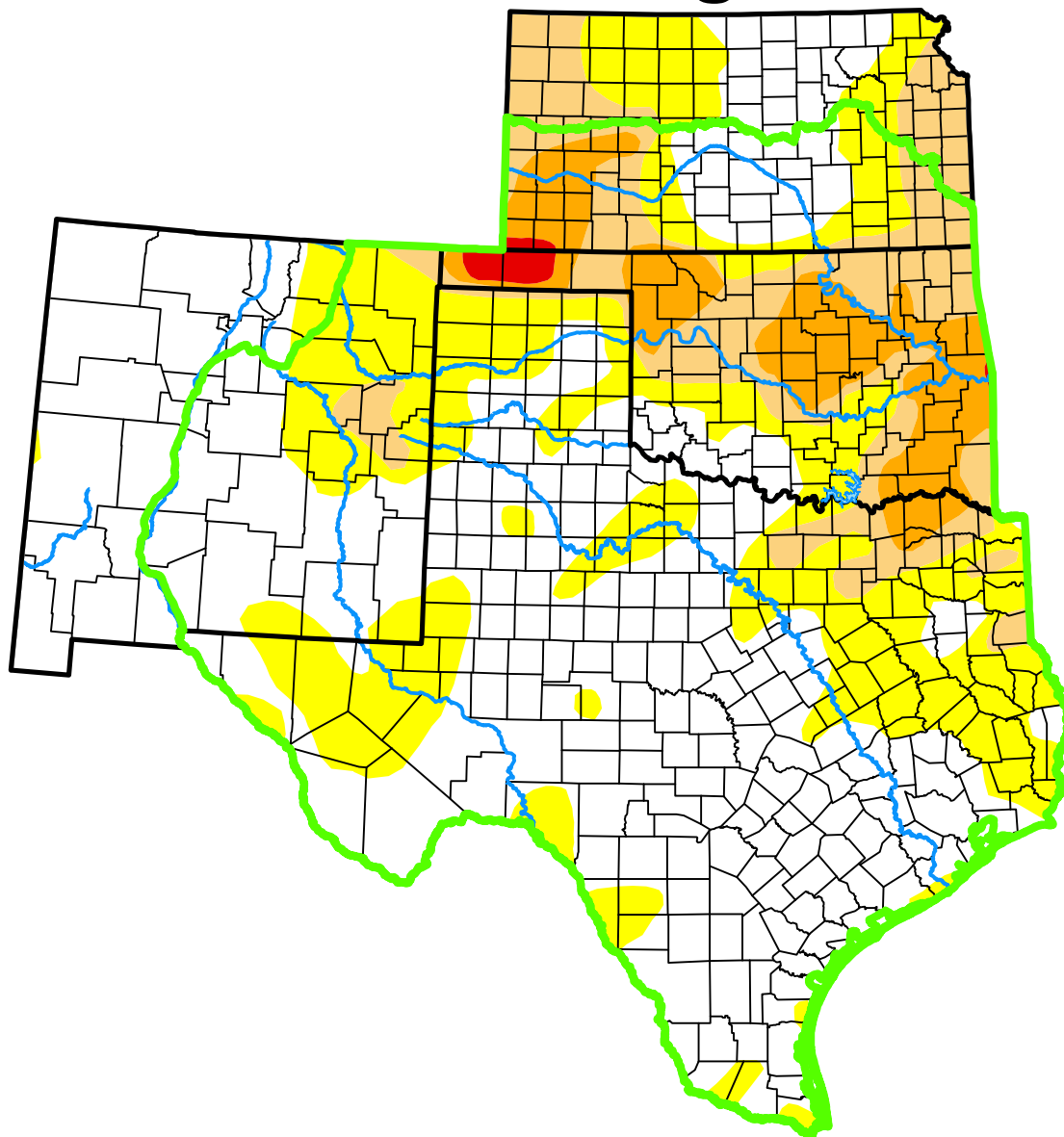


# U.S. Drought Monitor

## Southern Plains DEWS and Surrounding Areas



**March 14, 2017**

*(Released Thursday, Mar. 16, 2017)*

Valid 8 a.m. EDT

*Drought Conditions (Percent Area)*

	None	D0-D4	D1-D4	D2-D4	D3-D4	D4
<b>Current</b>	52.26	47.74	19.65	8.78	0.61	0.00
<b>Last Week</b> <i>03-07-2017</i>	56.45	43.55	19.57	9.00	0.61	0.00
<b>3 Months Ago</b> <i>12-13-2016</i>	62.00	38.00	20.66	9.49	0.52	0.00
<b>Start of Calendar Year</b> <i>01-03-2017</i>	58.87	41.13	21.68	12.58	0.91	0.00
<b>Start of Water Year</b> <i>09-27-2016</i>	85.87	14.13	3.85	0.48	0.00	0.00
<b>One Year Ago</b> <i>03-15-2016</i>	78.48	21.52	1.50	0.00	0.00	0.00

(Statistics for area highlighted in green)

### Intensity:

None	D2 Severe Drought
D0 Abnormally Dry	D3 Extreme Drought
D1 Moderate Drought	D4 Exceptional Drought

*The Drought Monitor focuses on broad-scale conditions. Local conditions may vary. For more information on the Drought Monitor, go to <https://droughtmonitor.unl.edu/About.aspx>*

### Author:

Brian Fuchs  
National Drought Mitigation Center



**droughtmonitor.unl.edu**