

# U.S. Drought Monitor

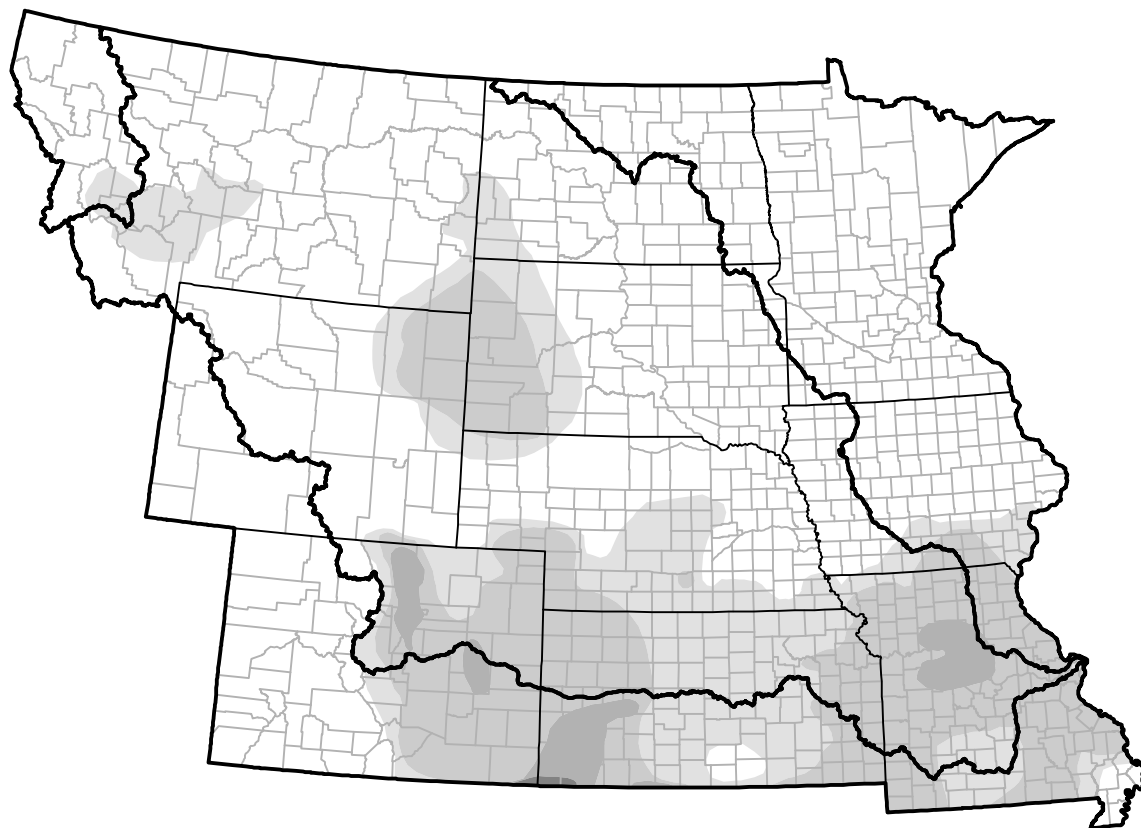
## Missouri River Basin RDEWS

**March 21, 2017**  
 (Released Thursday, Mar. 23, 2017)

Valid 8 a.m. EDT

### Drought Conditions (Percent Area)

	None	D0	D1	D2	D3	D4
<b>Current</b>	61.18	18.65	18.36	1.81	0.00	0.00
<b>Last Week</b> <i>03-16-2017</i>	64.57	16.85	16.95	1.63	0.00	0.00
<b>3 Months Ago</b> <i>12-22-2016</i>	53.38	30.82	13.48	2.32	0.00	0.00
<b>Start of Calendar Year</b> <i>01-05-2017</i>	55.38	28.62	14.59	1.41	0.00	0.00
<b>Start of Water Year</b> <i>09-29-2016</i>	68.23	19.54	8.58	3.39	0.26	0.00
<b>One Year Ago</b> <i>03-24-2016</i>	67.32	26.72	4.67	1.28	0.00	0.00



### Intensity:



The Drought Monitor focuses on broad-scale conditions. Local conditions may vary. For more information on the Drought Monitor, go to <https://droughtmonitor.unl.edu/About.aspx>

### Author:

Eric Luebehusen  
 U.S. Department of Agriculture



[droughtmonitor.unl.edu](https://droughtmonitor.unl.edu)