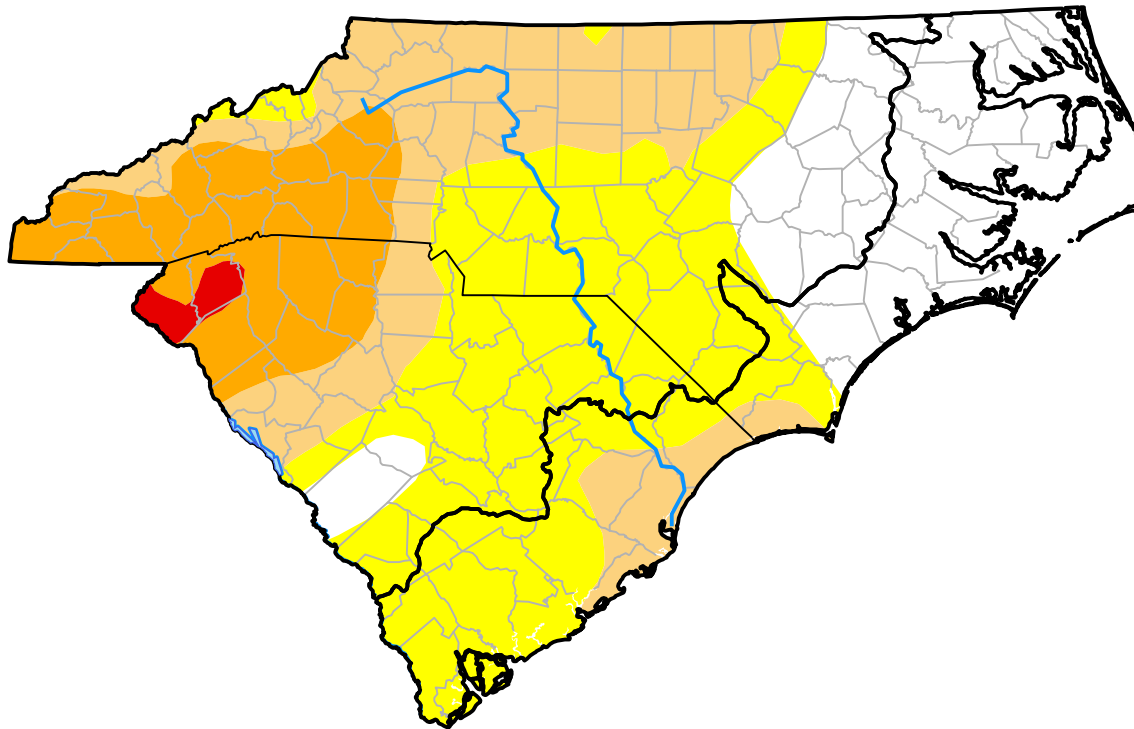


# Carolinas RDEWS and Surrounding Areas

(Released Thursday, Mar. 30, 2017)  
 10:00 a.m. EDT



Drought Conditions (Percent Area)

	None	D0	D1	D2	D3	D4
<b>Current</b>	22.35	39.08	23.60	13.95	1.03	0.00
<b>Last Week</b> <i>03-23-2017</i>	24.72	37.72	21.60	11.44	4.51	0.00
<b>3 Months Ago</b> <i>12-29-2016</i>	32.96	30.44	18.54	11.62	6.42	0.01
<b>Start of Calendar Year</b> <i>01-05-2017</i>	45.80	26.00	12.93	12.72	2.56	0.00
<b>Start of Water Year</b> <i>09-29-2016</i>	69.04	14.70	15.14	1.13	0.00	0.00
<b>One Year Ago</b> <i>03-31-2016</i>	79.24	20.76	0.00	0.00	0.00	0.00

Intensity:

- None
- D0 Abnormally Dry
- D1 Moderate Drought
- D2 Severe Drought
- D3 Extreme Drought
- D4 Exceptional Drought

The Drought Monitor focuses on broad-scale conditions. Local conditions may vary. For more information on the Drought Monitor, go to <https://droughtmonitor.unl.edu/About.aspx>

Author:

Eric Luebehusen  
 U.S. Department of Agriculture

