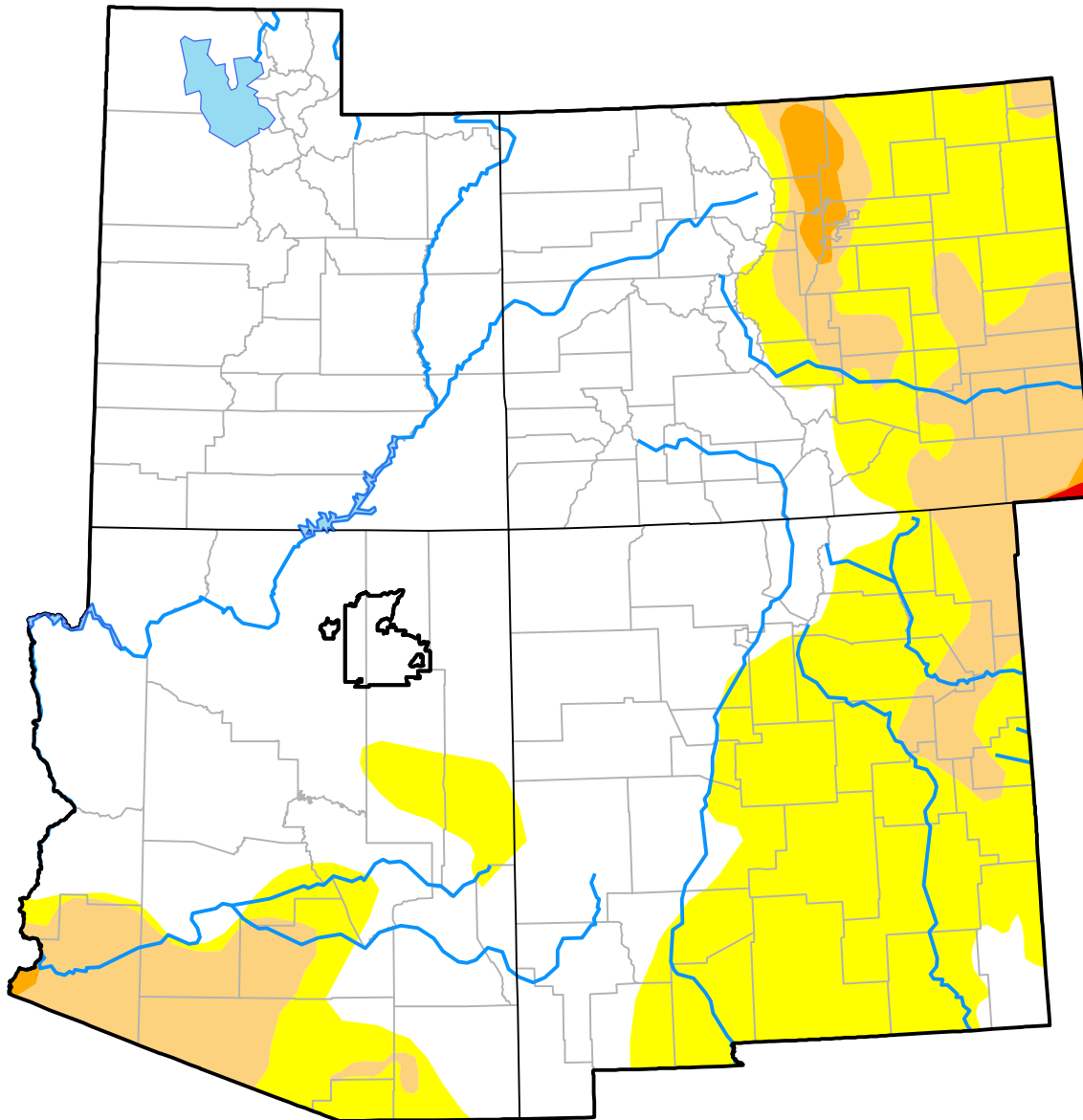


# U.S. Drought Monitor Hopi RDEWS

**March 28, 2017**  
(Released Thursday, Mar. 30, 2017)  
Valid 8 a.m. EDT

Drought Conditions (Percent Area)

	None	D0-D4	D1-D4	D2-D4	D3-D4	D4
<b>Current</b>	100.00	0.00	0.00	0.00	0.00	0.00
<b>Last Week</b> <i>03-23-2017</i>	100.00	0.00	0.00	0.00	0.00	0.00
<b>3 Months Ago</b> <i>12-29-2016</i>	0.00	100.00	49.68	0.00	0.00	0.00
<b>Start of Calendar Year</b> <i>01-05-2017</i>	0.00	100.00	49.68	0.00	0.00	0.00
<b>Start of Water Year</b> <i>09-29-2016</i>	0.00	100.00	49.68	0.00	0.00	0.00
<b>One Year Ago</b> <i>03-31-2016</i>	0.00	100.00	0.00	0.00	0.00	0.00



**Intensity:**

- None
- D0 Abnormally Dry
- D1 Moderate Drought
- D2 Severe Drought
- D3 Extreme Drought
- D4 Exceptional Drought

The Drought Monitor focuses on broad-scale conditions. Local conditions may vary. For more information on the Drought Monitor, go to <https://droughtmonitor.unl.edu/About.aspx>

**Author:**

Eric Luebehusen  
U.S. Department of Agriculture

