

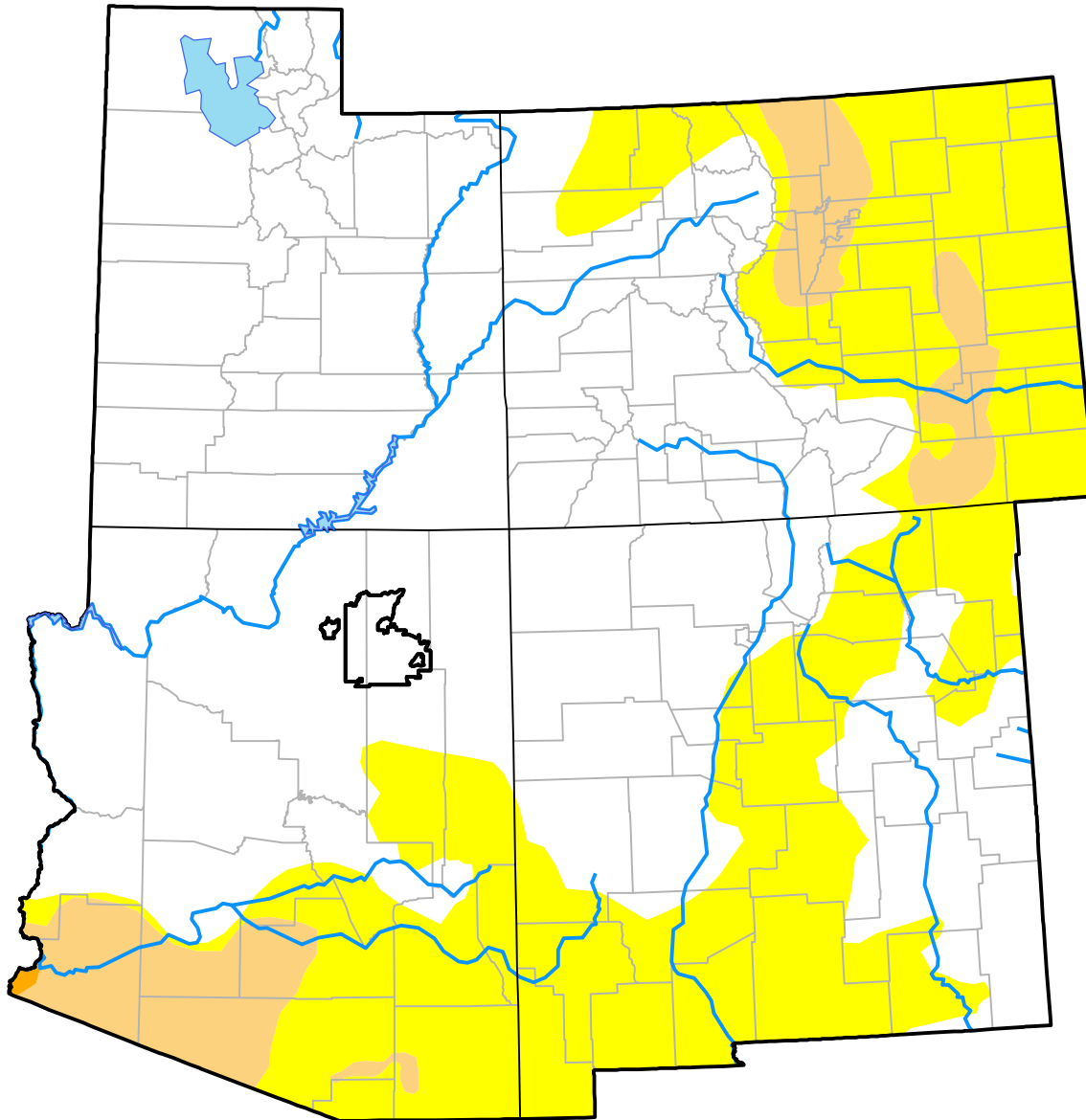
Nebraska RDEWS and Surrounding Areas

(Released Thursday, Apr. 20, 2017)

Valid 8 a.m. EDT

Drought Conditions (Percent Area)

	None	D0-D4	D1-D4	D2-D4	D3-D4	D4
Current	62.66	37.34	6.54	0.06	0.00	0.00
Last Week <i>04-13-2017</i>	66.50	33.50	9.06	0.06	0.00	0.00
3 Months Ago <i>01-19-2017</i>	51.32	48.68	16.54	1.16	0.00	0.00
Start of Calendar Year <i>01-05-2017</i>	46.78	53.22	19.65	1.69	0.00	0.00
Start of Water Year <i>09-29-2016</i>	42.64	57.36	16.56	1.61	0.00	0.00
One Year Ago <i>04-21-2016</i>	26.12	73.88	36.92	2.87	0.00	0.00



Intensity:

- None
- D0 Abnormally Dry
- D1 Moderate Drought
- D2 Severe Drought
- D3 Extreme Drought
- D4 Exceptional Drought

The Drought Monitor focuses on broad-scale conditions. Local conditions may vary. For more information on the Drought Monitor, go to <https://droughtmonitor.unl.edu/About.aspx>

Author:

Chris Fenimore
NCEI/NESDIS/NOAA

