

U.S. Drought Monitor

Arkansas-White-Red Watershed

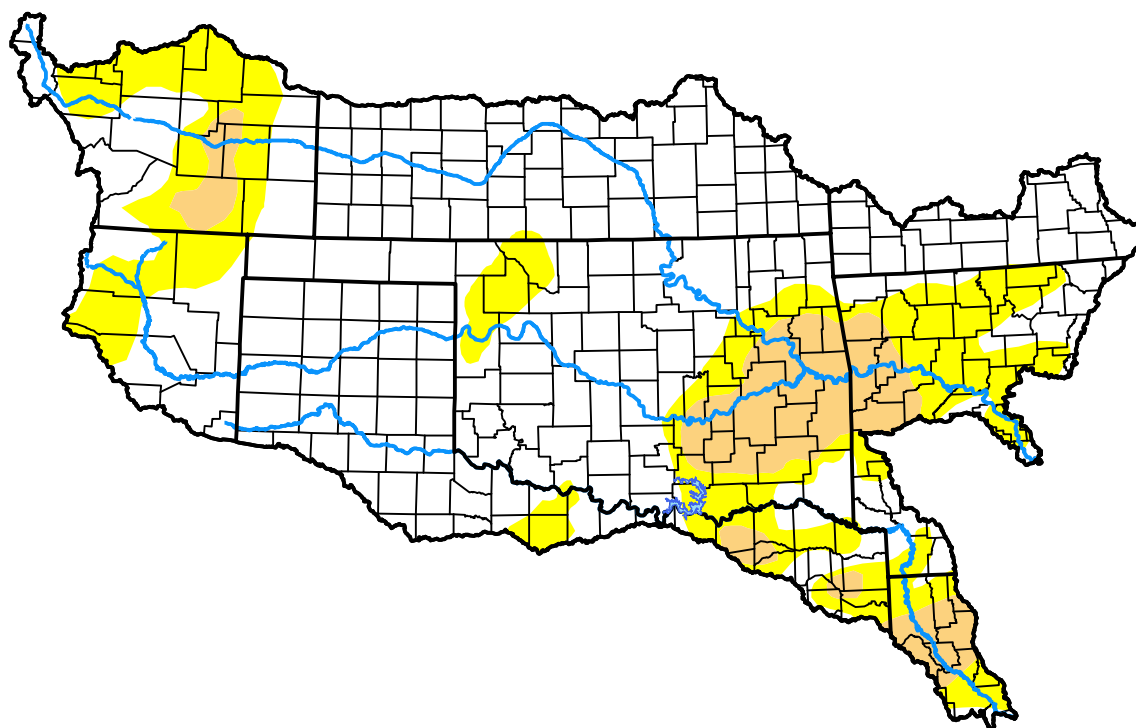
April 25, 2017

(Released Thursday, Apr. 27, 2017)

Valid 8 a.m. EDT

Drought Conditions (Percent Area)

	None	D0	D1	D2	D3	D4
Current	69.07	21.43	9.50	0.00	0.00	0.00
Last Week <i>04-20-2017</i>	45.13	36.45	14.69	3.73	0.00	0.00
3 Months Ago <i>01-26-2017</i>	30.44	23.13	31.74	13.15	1.54	0.00
Start of Calendar Year <i>01-05-2017</i>	12.70	33.65	29.11	22.50	2.04	0.00
Start of Water Year <i>09-29-2016</i>	79.48	14.68	4.98	0.86	0.00	0.00
One Year Ago <i>04-28-2016</i>	42.80	46.26	10.19	0.75	0.00	0.00



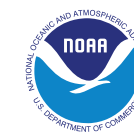
Intensity:



The Drought Monitor focuses on broad-scale conditions. Local conditions may vary. For more information on the Drought Monitor, go to <https://droughtmonitor.unl.edu/About.aspx>

Author:

Eric Luebehusen
U.S. Department of Agriculture



droughtmonitor.unl.edu