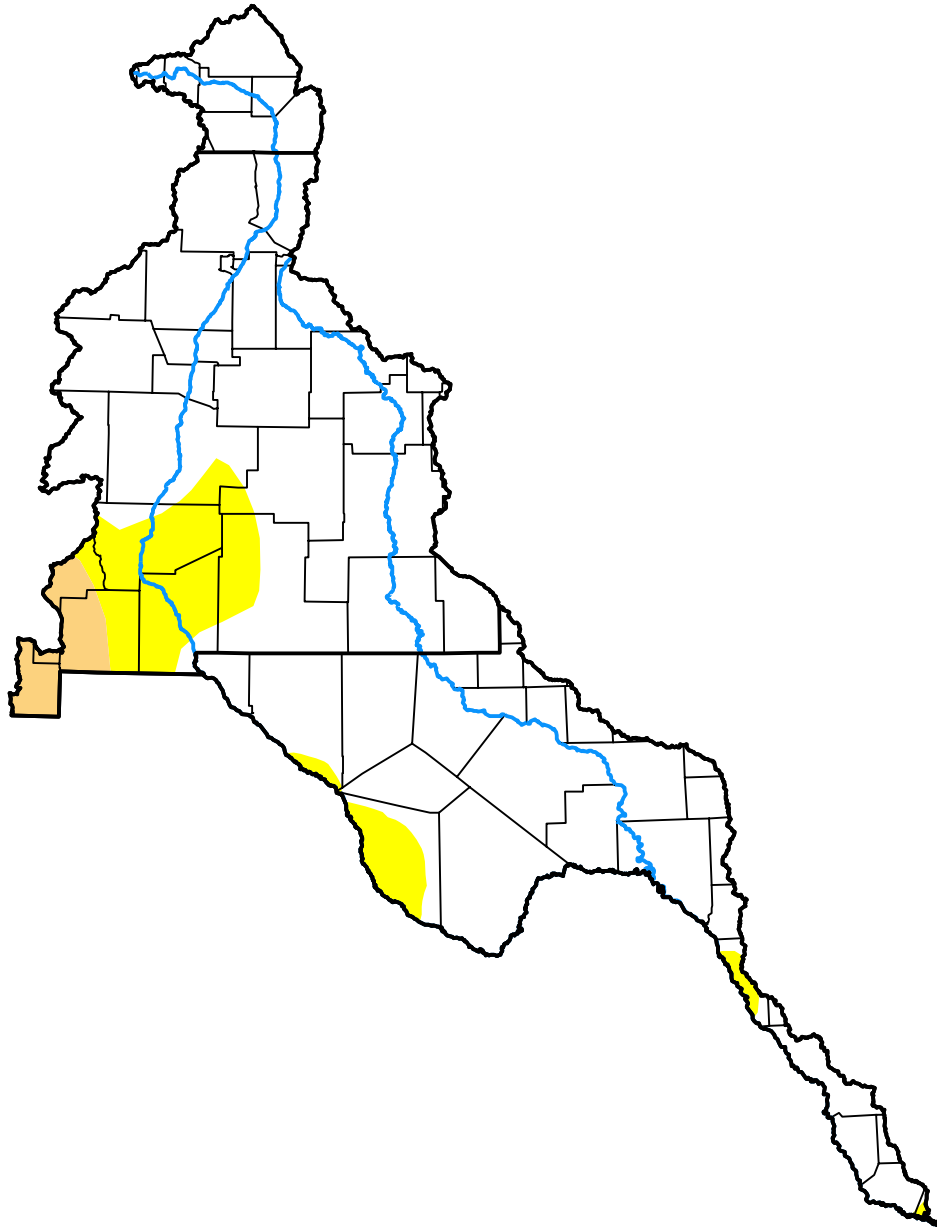


U.S. Drought Monitor

Rio Grande Watershed

May 9, 2017
 (Released Thursday, May. 11, 2017)
 Valid 8 a.m. EDT



Drought Conditions (Percent Area)

	None	D0	D1	D2	D3	D4
Current	86.02	11.10	2.88	0.00	0.00	0.00
Last Week <i>05-04-2017</i>	88.56	11.42	0.02	0.00	0.00	0.00
3 Months Ago <i>02-09-2017</i>	93.44	4.89	1.67	0.00	0.00	0.00
Start of Calendar Year <i>01-05-2017</i>	83.38	15.70	0.92	0.00	0.00	0.00
Start of Water Year <i>09-29-2016</i>	75.04	24.10	0.86	0.00	0.00	0.00
One Year Ago <i>05-12-2016</i>	33.45	41.73	24.82	0.00	0.00	0.00

Intensity:

- None
- D0 Abnormally Dry
- D1 Moderate Drought
- D2 Severe Drought
- D3 Extreme Drought
- D4 Exceptional Drought

The Drought Monitor focuses on broad-scale conditions. Local conditions may vary. For more information on the Drought Monitor, go to <https://droughtmonitor.unl.edu/About.aspx>

Author:

Brian Fuchs
 National Drought Mitigation Center

