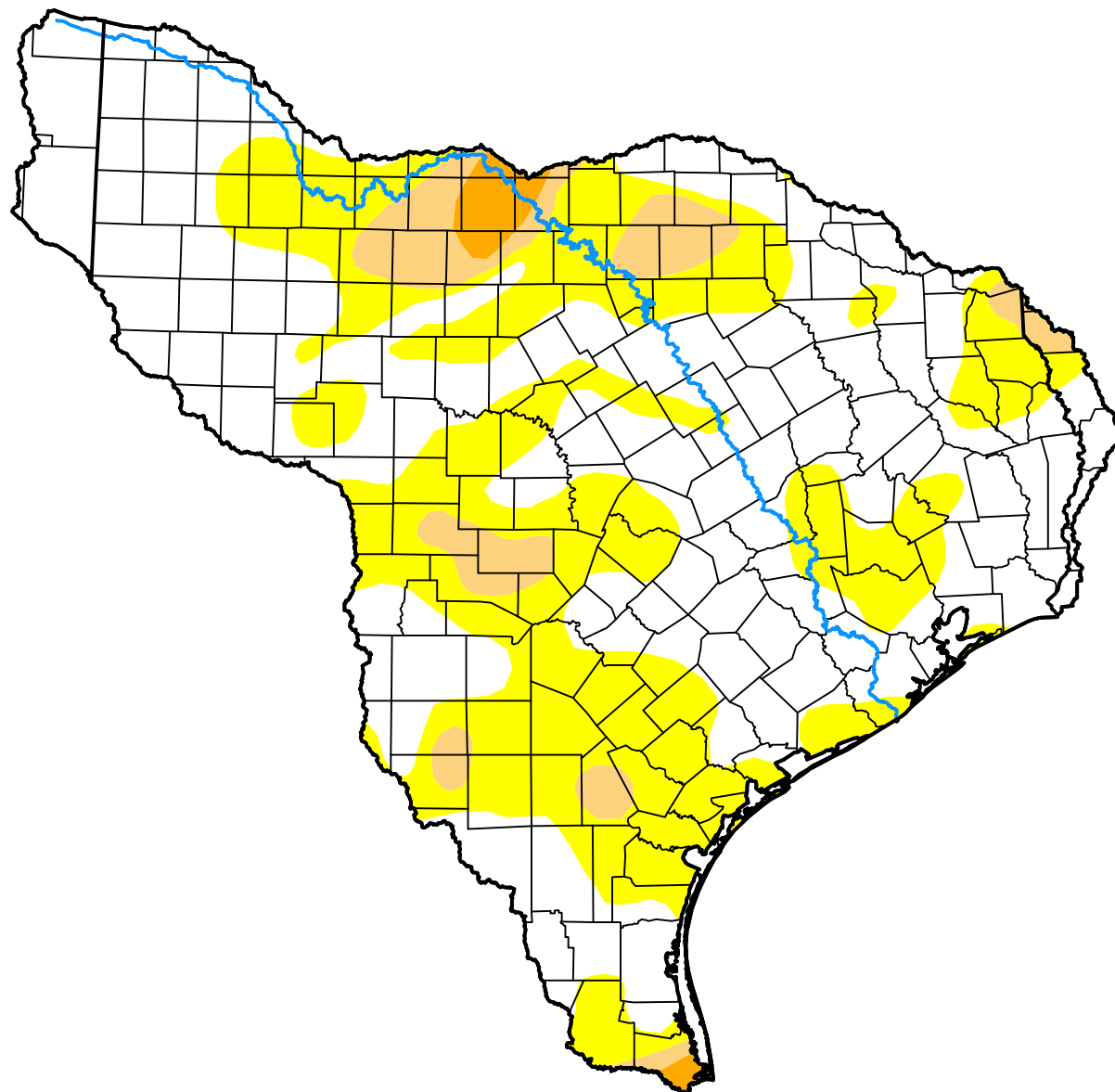


# U.S. Drought Monitor Texas-Gulf Watershed

**May 16, 2017**  
(Released Thursday, May. 18, 2017)  
Valid 8 a.m. EDT



## Intensity:



*The Drought Monitor focuses on broad-scale conditions. Local conditions may vary. For more information on the Drought Monitor, go to <https://droughtmonitor.unl.edu/About.aspx>*

## Author:

Brad Rippey  
U.S. Department of Agriculture



**droughtmonitor.unl.edu**