

# U.S. Drought Monitor

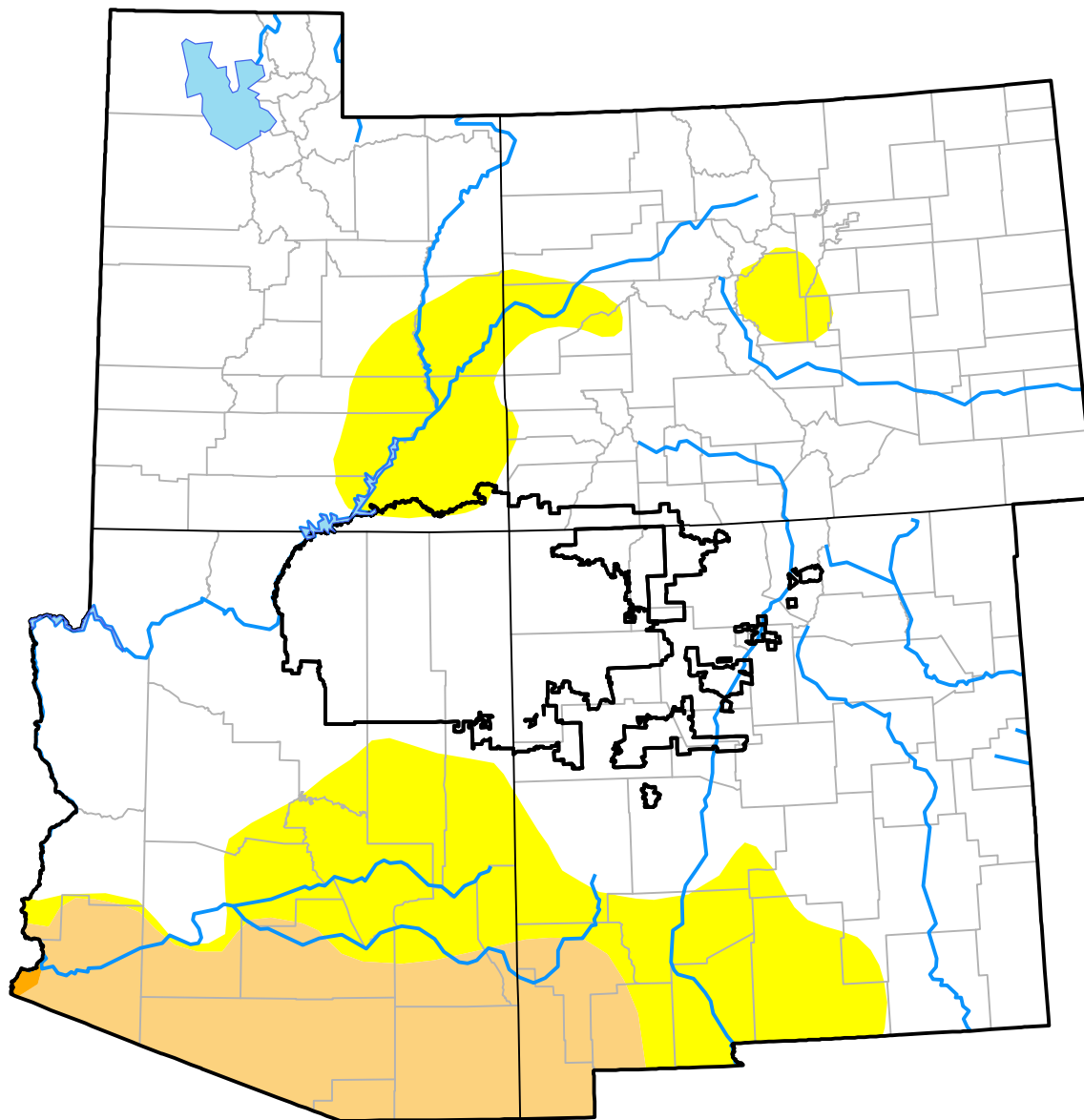
## Four Corners RDEWS

**May 23, 2017**  
 (Released Thursday, May. 25, 2017)

Valid 8 a.m. EDT

*Drought Conditions (Percent Area)*

	None	D0	D1	D2	D3	D4
<b>Current</b>	98.53	1.47	0.00	0.00	0.00	0.00
<b>Last Week</b> <i>05-18-2017</i>	98.53	1.47	0.00	0.00	0.00	0.00
<b>3 Months Ago</b> <i>02-23-2017</i>	56.06	43.94	0.00	0.00	0.00	0.00
<b>Start of Calendar Year</b> <i>01-05-2017</i>	46.06	33.34	20.60	0.00	0.00	0.00
<b>Start of Water Year</b> <i>09-29-2016</i>	5.69	65.61	28.71	0.00	0.00	0.00
<b>One Year Ago</b> <i>05-26-2016</i>	1.83	89.29	8.88	0.00	0.00	0.00



**Intensity:**

- None
- D0 Abnormally Dry
- D1 Moderate Drought
- D2 Severe Drought
- D3 Extreme Drought
- D4 Exceptional Drought

*The Drought Monitor focuses on broad-scale conditions. Local conditions may vary. For more information on the Drought Monitor, go to <https://droughtmonitor.unl.edu/About.aspx>*

**Author:**

Brad Rippey  
 U.S. Department of Agriculture



[droughtmonitor.unl.edu](https://droughtmonitor.unl.edu)