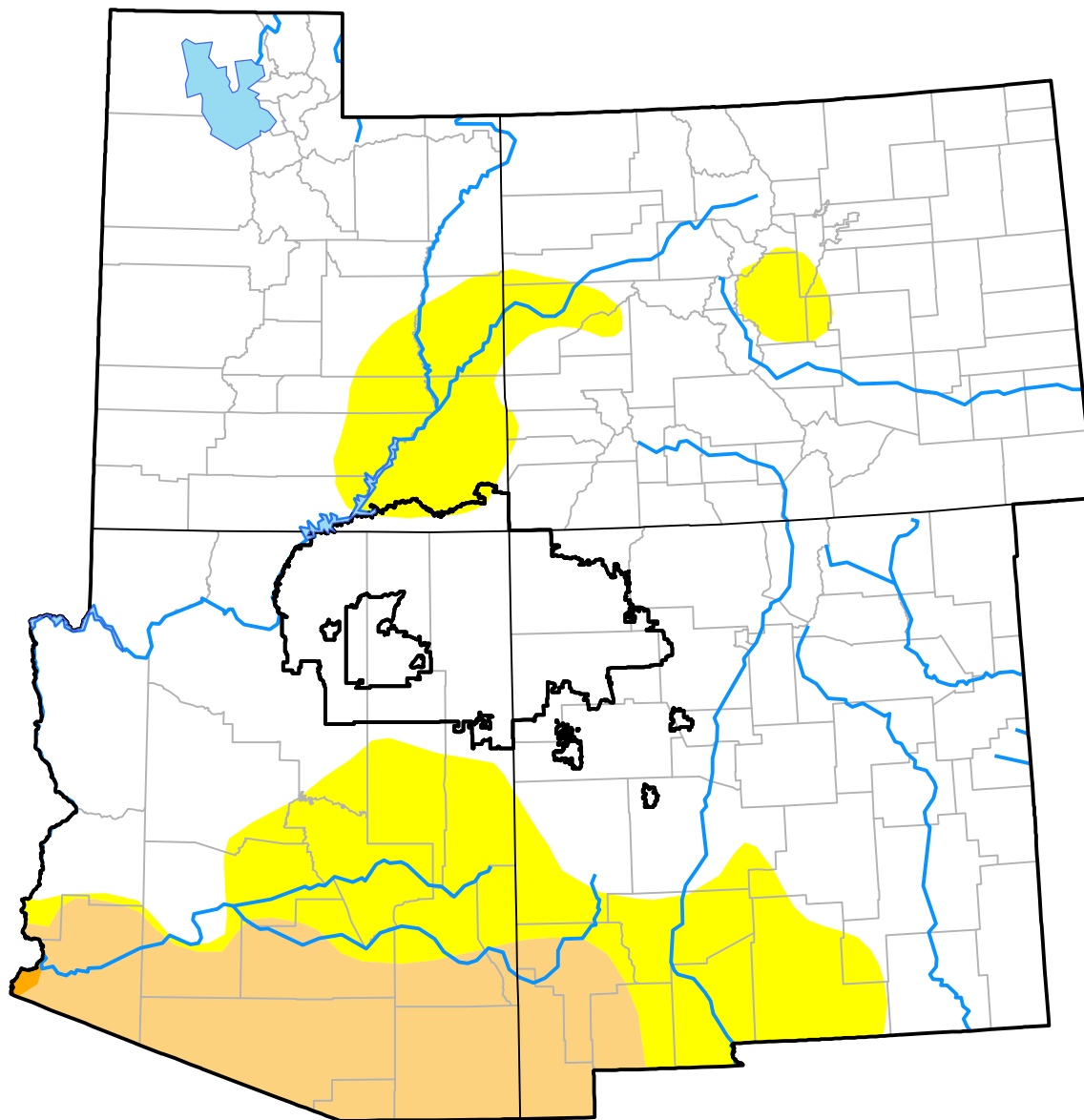


# U.S. Drought Monitor

## Navajo RDEWS

**May 23, 2017**  
*(Released Thursday, May. 25, 2017)*  
 Valid 8 a.m. EDT



*Drought Conditions (Percent Area)*

	None	D0-D4	D1-D4	D2-D4	D3-D4	D4
<b>Current</b>	98.06	1.94	0.00	0.00	0.00	0.00
<b>Last Week</b> <i>05-18-2017</i>	98.06	1.94	0.00	0.00	0.00	0.00
<b>3 Months Ago</b> <i>02-23-2017</i>	52.03	47.97	0.00	0.00	0.00	0.00
<b>Start of Calendar Year</b> <i>01-05-2017</i>	41.25	58.75	21.38	0.00	0.00	0.00
<b>Start of Water Year</b> <i>09-29-2016</i>	2.59	97.41	32.28	0.00	0.00	0.00
<b>One Year Ago</b> <i>05-26-2016</i>	0.06	99.94	6.44	0.00	0.00	0.00

### Intensity:

None	D2 Severe Drought
D0 Abnormally Dry	D3 Extreme Drought
D1 Moderate Drought	D4 Exceptional Drought

*The Drought Monitor focuses on broad-scale conditions. Local conditions may vary. For more information on the Drought Monitor, go to <https://droughtmonitor.unl.edu/About.aspx>*

### Author:

Brad Rippey  
 U.S. Department of Agriculture



**droughtmonitor.unl.edu**