

U.S. Drought Monitor

Lower Mississippi Watershed

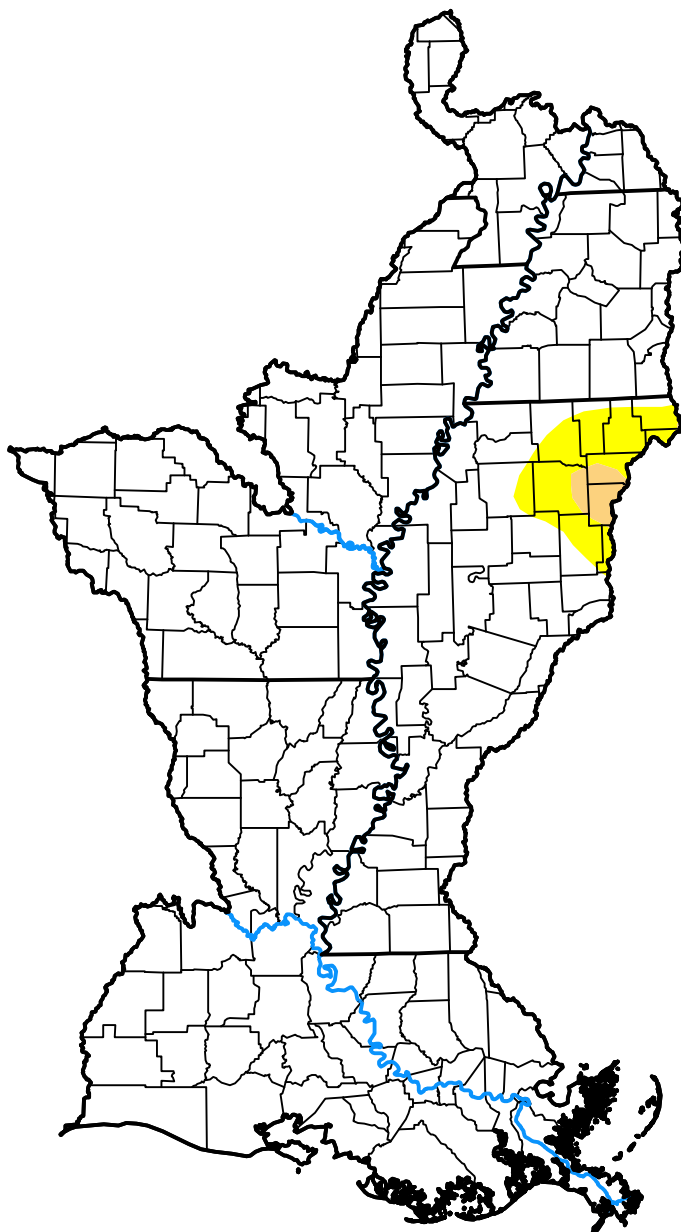
June 6, 2017

(Released Thursday, Jun. 8, 2017)

Valid 8 a.m. EDT

Drought Conditions (Percent Area)

	None	D0-D4	D1-D4	D2-D4	D3-D4	D4
Current	96.51	3.49	0.60	0.00	0.00	0.00
Last Week 06-01-2017	96.51	3.49	0.60	0.00	0.00	0.00
3 Months Ago 03-09-2017	28.73	71.27	4.62	0.06	0.00	0.00
Start of Calendar Year 01-05-2017	46.67	53.33	26.84	0.00	0.00	0.00
Start of Water Year 09-29-2016	60.48	39.52	7.61	2.05	0.00	0.00
One Year Ago 06-09-2016	74.10	25.90	0.00	0.00	0.00	0.00



Intensity:

None	D2 Severe Drought
D0 Abnormally Dry	D3 Extreme Drought
D1 Moderate Drought	D4 Exceptional Drought

The Drought Monitor focuses on broad-scale conditions. Local conditions may vary. For more information on the Drought Monitor, go to <https://droughtmonitor.unl.edu/About.aspx>

Author:

Deborah Bathke
National Drought Mitigation Center



droughtmonitor.unl.edu