

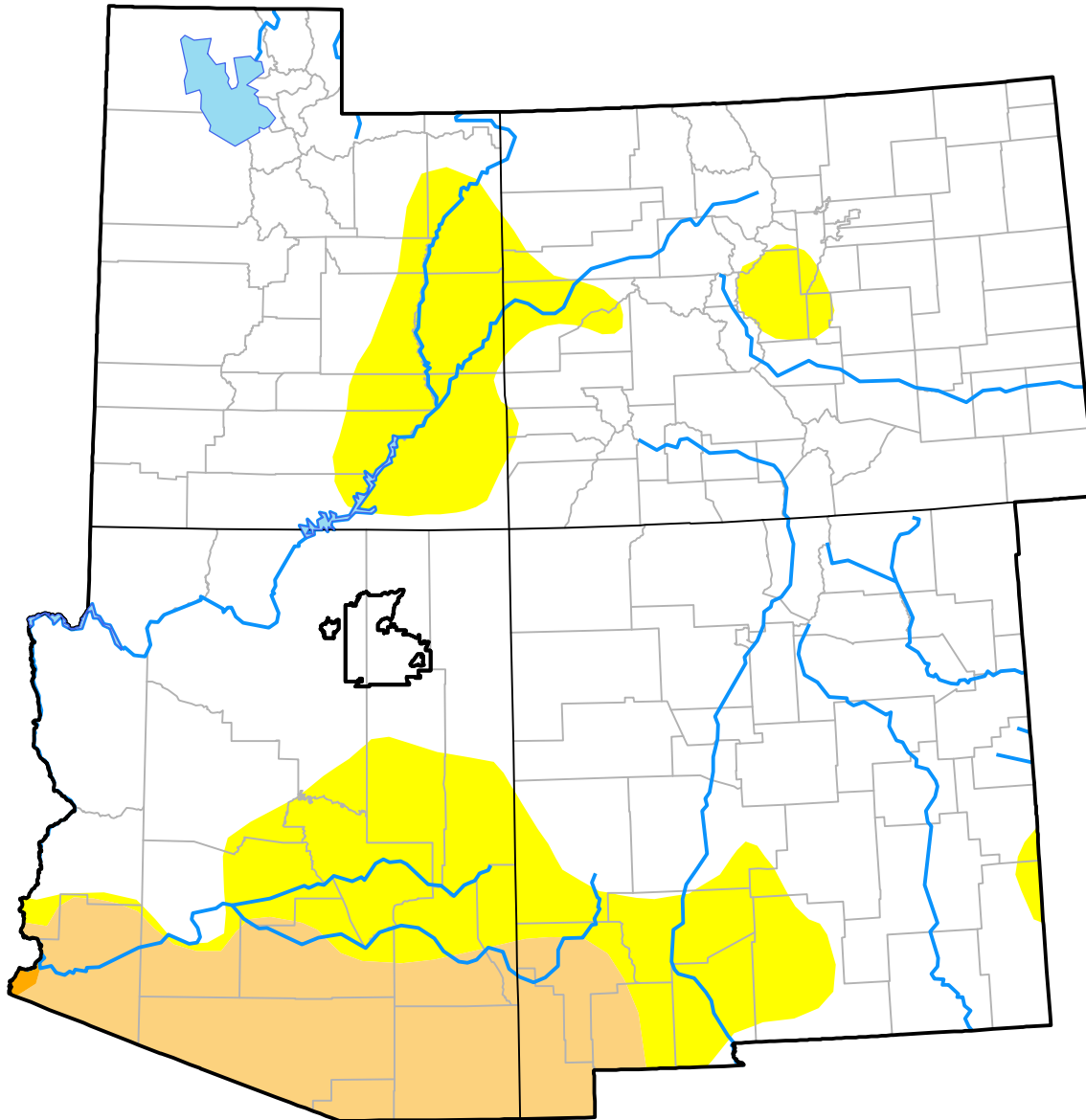
Opportunity RDEWS and Surrounding Areas

(Released Thursday, Jun. 15, 2017)

Valid 8 a.m. EDT

Drought Conditions (Percent Area)

	None	D0	D1	D2	D3	D4
Current	74.99	15.66	9.29	0.06	0.00	0.00
Last Week <i>06-08-2017</i>	74.63	16.01	9.29	0.06	0.00	0.00
3 Months Ago <i>03-16-2017</i>	72.84	12.35	13.67	1.10	0.05	0.00
Start of Calendar Year <i>01-05-2017</i>	46.78	33.57	17.96	1.69	0.00	0.00
Start of Water Year <i>09-29-2016</i>	42.64	40.80	14.95	1.61	0.00	0.00
One Year Ago <i>06-16-2016</i>	40.82	38.75	18.28	2.15	0.00	0.00



Intensity:

- None
- D0 Abnormally Dry
- D1 Moderate Drought
- D2 Severe Drought
- D3 Extreme Drought
- D4 Exceptional Drought

The Drought Monitor focuses on broad-scale conditions. Local conditions may vary. For more information on the Drought Monitor, go to <https://droughtmonitor.unl.edu/About.aspx>

Author:

David Miskus
NOAA/NWS/NCEP/CPC

